

Indoor Distribution boxes

The Indoor Distribution boxes family serve as a connection and branching solution for indoor use accommodating different types of LSA-PLUS® modules. Various capacities, materials, locking and mounting options are available. A wide range of the applicable LSA-PLUS® accessories can be used as well as for some configurations the option to upgrade towards the use of overvoltage protection products. The current grouping is into 4 sub-categories:

1. Steel Distribution boxes
2. Universal steel distribution boxes
3. Plastic KRONECTION boxes
4. Mini Plastic Distribution boxes

Steel Distribution Boxes

Wall box designs with capacities from 100 – 1340 pairs

A range of lightweight steel distribution boxes for LSA-PLUS® series 2 10-pair modules. Each of the standard 500 series boxes is equipped with stainless steel backmount frames to support either 100-, 200- or 400-pairs. Additional features include jumper rings as standard for tidy cable management; lockable doors with 180-degree access, doors can also be removed for installation and then hinged either right or left depending on the physical environment.

510, 520, 530 and 540 boxes supporting capacities of 340-, 680-, 1020- or 1340-pairs. As with the standard range these boxes utilize removable and lockable doors which also include a facility to store document wallets.



Features and benefits

- Strong, robust and durable solution
- Suitable for overvoltage protection products
- Includes mounting brackets which are mounted directly on the rear wall of the housing
- Two locks included
- Cable entrance possible from top and bottom side
- Sufficient amount of cable guidance elements available
- Quick release hinges for left& right door mounting
- Doors include a facility to store document wallets
- Increases flexibility

Specifications

Design and configurations

Product description	Maximum capacity (pairs)	Backmount frames	Jumper rings	Dimensions (mm) Height x depth x width	Netto Weight (kg)
Steel Distribution box 500 Series	100	1x10 way	4	H350 x D115 x W235	3.2
Steel Distribution box 500 Series	200	1x20 way	6	H700 x D115 x W235	5.2
Steel Distribution box 500 Series	200	2x10 way	6	H350 x D115 x W425	5.4
Steel Distribution box 500 Series	400	2x20 way	9	H700 x D115 x W425	8.6
Steel Distribution box 510 Series	340	1x34 way	8	H1000 x D140 x W300	11
Steel Distribution box 520 Series	680	2x34 way	12	H1000 x D140 x W500	17
Steel Distribution box 530 Series	1020	3x34 way	16	H1000 x D140 x W750	25
Steel Distribution box 540 Series	1340	4x34 way	20	H1000 x D140 x W1000	32



The range of lightweight Steel Distribution boxes for LSA- PLUS 10-pair modules

General attributes & mechanical characteristics

Installation:

During the installation it is necessary to earth the protection components in accordance with generally applicable guidelines. No wall mount material is included.

Product specifications:

Material:	Lightweight, mild steel
Color:	Grey (RAL 7032 or RAL 7035)
Protection class	IP20 according to DIN 450050
Misc.:	Removable and lockable doors with 180 degrees access. (Doors can be installed left or right side)

Steel Distribution boxes

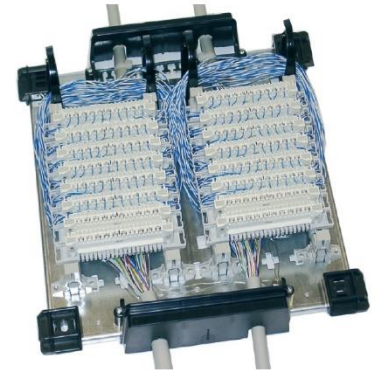
Order number	Product description
64282421-00	Steel Distribution box for LSA-PLUS® Series 2 modules (up to 100 lines) with backmount frame
64282420-00	Steel Distribution box for LSA-PLUS® Series 2 modules (up to 200 lines) with backmount frame
64282419-00	Steel Distribution box for LSA-PLUS® Series 2 modules (up to 200 lines) with backmount frame
64282418-00	Steel Distribution box for LSA-PLUS® Series 2 modules (up to 400 lines) with backmount frame
64282423-00	Steel Distribution box for LSA-PLUS® Series 2 modules (up to 340 lines) with backmount frame
64282424-00	Steel Distribution box for LSA-PLUS® Series 2 modules (up to 680 lines) with backmount frame
64282425-00	Steel Distribution box for LSA-PLUS® Series 2 modules (up to 1020 lines) with backmount frame
64282422-00	Steel Distribution box for LSA-PLUS® Series 2 modules (up to 1340 lines) with backmount frame

Universal steel distribution box

Modular design

The Universal Steel distribution box product family provides a space-saving solution for small and medium-sized data and telecommunication networks based on copper technology. The boxes come in various dimensions and are designed for wall mounting in dry, indoor areas. The boxes can be outfitted with overvoltage protection up to a maximum height of 33mm above the modules. All overvoltage protection magazines, as well as several configurations of ComProtect® protection plugs can be installed on the Universal steel distribution box.

The base plate of the Universal steel distribution box is a galvanized sheet metal equipped with plastic corner pieces for wall mounting. The base plate contains holes for mounting the UniClip and guide ring components. Also cable support is integrated at the top and bottom of the plate.



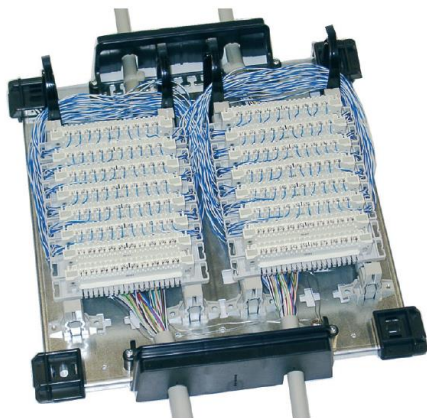
Features and benefits

- Flexible for both Backmount / PROFILE rod mounting options
- Earthing set included (consisting of two profile rods with rivets, toothed washers, nuts and earth wires)
- The patented UniClip is used as central mounting element for all connection components
- Enhanced protection against unauthorized access is achieved by a swivel handle and security lock. The swivel handle is installed in the cover in place of the plastic label
- Applicable with several configurations of ComProtect® protection plugs and all overvoltage protection magazines
- Easy to install and cable access
- Offers variability

Specifications

Design and configurations

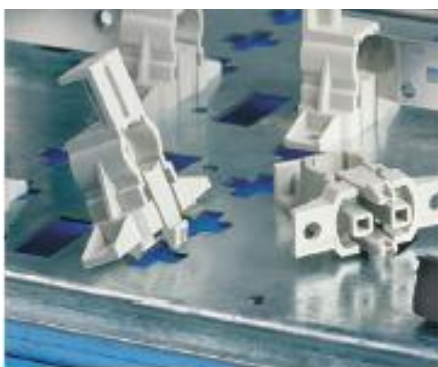
Product description	Maximum capacity (pairs)	Modules type	Dimensions (mm) Height x depth x width
Universal steel distribution box 2	60 100	6 LSA-PLUS® Series 2 modules 10 LSA-PLUS® HD 180 modules	H320 x D86 x W225
Universal steel distribution box 4	120 200	12 LSA-PLUS® Series 2 modules 20 LSA-PLUS® HD 180 modules	H320 x D86 x W320
Universal steel distribution box 8	300 480	30 LSA-PLUS® Series 2 modules 48 LSA-PLUS® HD 180 modules	H535 x D86 x W320
Universal steel distribution box 12	450 720	45 LSA-PLUS® Series 2 modules 72 LSA-PLUS® HD 180 modules	H535 x D86 x W520



Universal steel distribution box



Profile half-cylinder lock with key, Code 19



The patented UniClip on the baseplate of the Universal Steel distribution box

General attributes & mechanical characteristics

Installation:

During the installation it is necessary to earth the protection components in accordance with generally applicable guidelines. Every profile rod (two per bay) should be earthed.

Product specifications:

Material:	Galvanized sheet metal base sheet metal cover, powder-painted
Color:	Grey RAL 7035
Protection class:	IP 40 according to DIN 40050
Misc.:	Back mount frame and PROFILE versions available

Universal steel distribution box

Order number	Product description
70791020-00 70791020-03	Universal steel distribution box 2 Profile rods – 6pcs LSA-PLUS® Series 2 or 10pcs LSA-PLUS® HD180 modules Back mount frame – 6pcs LSA-PLUS® Series 2 modules
70791040-00 70791040-03	Universal steel distribution box 4 Profile rods – 12pcs LSA-PLUS® Series 2 or 20pcs LSA-PLUS® HD180 modules Back mount frame – 12pcs LSA-PLUS® Series 2 modules
70791080-00 70791080-03	Universal steel distribution box 8 Profile rods – 30pcs LSA-PLUS® Series 2 or 48pcs LSA-PLUS® HD180 modules Back mount frame – 30pcs LSA-PLUS® Series 2 modules
70791120-00 70791120-03	Universal steel distribution box 12 Profile rods – 45pcs LSA-PLUS® Series 2 or 72pcs LSA-PLUS® HD180 modules Back mount frame – 45pcs LSA-PLUS® Series 2 modules

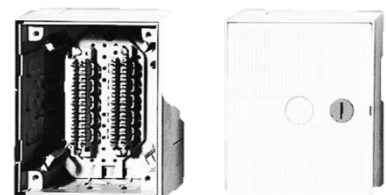
Universal steel distribution box - Accessories

Order number	Product description
70791430-00	Swivel handle
70562360-00	Profile half-cylinder, Code 19 (without keys)
70562364-00	Profile half-cylinder, Code 15 (without keys)
52673383-52	Key for lock, Code 19
52673383-57	Key for lock, Code 15
70791435-00	Kit for cover contact
70791440-00	Earth kit for Universal steel distribution box 2 and 4
70791441-00	Earth kit for Universal steel distribution box 8 and 12
70791442-00	Earth terminals (quantity: 10)

Plastic KRONECTION Boxes

Flexible and comprehensive design for surface and flush-mounted applications

KRONECTION boxes are highly versatile. Three compact sizes with variable depth are available and are designed for surface or flush mounting. With just a few components, a high degree of flexibility is achieved at economical inventory costs. The box is made of polystyrene, a self-extinguishing plastic which ensure corrosion-free, highly impact resistant, stable and maintenance-free use. All installation aids, such as cable entries, cable fixing rings and wire guides, are already molded as part of the KRONECTION box design.



Features and benefits

- Suitable for overvoltage protection (with use of additional attachment frame)
- Backmount frame mounting brackets included
- Highly versatile boxes
- All installation aids, such as cable entries, cable fixing rings and wire guide rings, are molded as part of the KRONECTION box
- Self-extinguishing & maintenance-free material use
- Turnbuckle locking mechanism (Optional cylinder lock including key available)

Specifications

Design and configurations

Product description	Maximum capacity (pairs)*	Size (mm) Height x depth x width	Weight range (kg)
Plastic KRONECTION box 1	30	H170 x D75 x W140	0.460 - 0.520
Plastic KRONECTION box 2	70	H215 x D75 x W215	0.650 - 0.900
Plastic KRONECTION box 3	120	H320 x D75 x W215	0.912 - 1.300

*Without label holder



Plastic KRONECTION box 1



Flush mounting box (shown for Plastic KRONECTION box 1)



Attachment frame (shown for Plastic KRONECTION box 1)



Lock and key (optional upgrade)

General attributes & mechanical characteristics

Installation:

Surface mounting is advised. Flush mounting is possible with a flush mounting frame. For installation of overvoltage protection elements, an additional attachment frame is required.

Product specifications:

Material:	Polystyrol
Color:	Grey RAL 7035 (polystyrol compatible paintings possible)
Protection class:	IP 30 according to DIN 40050
Flame resistance:	Flame resistant according to UL 94 V-O
Locking Mechanism:	Turnbuckle locking mechanism (Optional - cylinder lock including key)

Plastic KRONECTION boxes

Order number	Product description	Specific weight (kg)
	Plastic KRONECTION box I	
64361013-20	Box including backmount frame for 3 LSA-PLUS® modules 2/10	0.490
	Plastic KRONECTION box II	
64061015-20	Box including backmount frame for 5 LSA-PLUS® modules 2/10	0.780
	Plastic KRONECTION box III	
64371020-20	Box including backmount frame for 10 LSA-PLUS® modules 2/10	1.200

Distribution Plastic KRONECTION boxes - Accessories

Order number	Product description
	Plastic KRONECTION box I
64362004-20	Flush-mounting frame
64363003-20	Attachment frame
	Plastic KRONECTION box II
64062004-20	Flush-mounting frame
64063003-20	Attachment frame
	Plastic KRONECTION box III
64372004-20	Flush-mounting frame
64373003-20	Attachment frame
	General accessories for all KRONECTION boxes
64372010-00	Cylinder lock for replacing the turnbuckle (incl. one key)

Mini Plastic Distribution Boxes

For PROFIL mountings systems

The mini distribution boxes are general purpose boxes with profile rods for the ease & flexible installation of LSA-PLUS® series 2 or LSA-PLUS® HD 180 10-pair PROFIL modules only. The base plate is equipped with of profile clips and plastic profile tubes as well as sufficient wire guide elements. Cable entrances can be realized through all four sides of the box.



Mini Plastic Distribution box

Features and benefits

- Easy to install
- Flexible PROFIL rod systems allows usage of different module types
- Capacity range from 30- to 180-pairs
- Easy customized cable access
- Several cable guidance elements

Specifications

Design and configurations

Order number	Product description	Connection Technology					
		Series 2			HD 180		
		30	50	100	60	100	180
70811041-00	Mini plastic distribution box 30	1			1		
70811041-02	Mini plastic distribution box 50		1			1	
70811041-04	Mini plastic distribution box 100			1			1
60891121-02	LSA-PLUS® Series 2 profile 10-pairs	3	5	10			
LSA-70142250-00	LSA-PLUS® HD 180 profile 10-pairs				6	10	18

General attributes & mechanical characteristics

Product specifications:

Material:	ABS, Novodur
Color:	Grey (RAL 7047)
Protection class:	IP 20 acc. DIN40050

Mini Plastic Distribution boxes (for PROFIL modules)

Order number	Product description	Dimensions (mm)Height x depth x width
70811041-00	Mini Plastic Distribution box 30	H190 x D80 x W125
70811041-02	Mini Plastic Distribution box 50	H210 x D90 x W160
70811041-04	Mini Plastic Distribution box 100	H320 x D120 x W210

commscope.com

Visit our website or contact your local CommScope representative for more information.

© 2021 CommScope, Inc. All rights reserved.

All trademarks identified by ® or ™ are registered trademarks or trademarks, respectively, of CommScope, Inc. This document is for planning purposes only and is not intended to modify or supplement any specifications or warranties relating to CommScope products or services.

CommScope is committed to the highest standards of business integrity and environmental sustainability with a number of CommScope's facilities across the globe certified in accordance with international standards including ISO 9001, TL 9000, and ISO 14001. Further information regarding CommScope's commitment can be found at www.commscope.com/About-Us/Corporate-Responsibility-and-Sustainability.

PA-115116.1-EN (08/21)