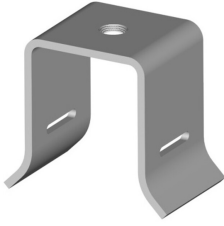


# 294561

---



Stand-off Adapter, 3/8 in tapped hole. Provides 2 inches of standoff from round member.

## Product Classification

<b>Product Type</b>	Adapter
<b>Product Brand</b>	I-Line
<b>Ordering Note</b>	CommScope® non-standard product

## General Specifications

<b>Adapter Type</b>	Stand-off adapter
<b>Mounting</b>	3/8 in tapped hole

## Dimensions

<b>Inside Width</b>	44.45 mm   1.75 in
<b>Outside Width</b>	57.15 mm   2.25 in
<b>Inside Length</b>	60.452 mm   2.38 in
<b>Outside Length</b>	38.1 mm   1.5 in
<b>Material Thickness</b>	2.667 mm   0.105 in

## Material Specifications

<b>Material Type</b>	Stainless steel
----------------------	-----------------

## Mechanical Specifications

<b>Installation Torque, maximum</b>	15 ft lb   20.337 N-m
<b>Installation Torque, minimum</b>	11 ft lb   14.914 N-m
<b>Maximum Loading</b>	Double stack, 1-5/8 in cable

## Packaging and Weights

<b>Height, packed</b>	17 cm   6.693 in
<b>Width, packed</b>	13 cm   5.118 in
<b>Length, packed</b>	10 cm   3.937 in

# 294561

---

**Packaging quantity** 10  
**Weight, gross** 1.7 kg | 3.748 lb

## Regulatory Compliance/Certifications

<b>Agency</b>	<b>Classification</b>
REACH-SVHC	Compliant as per SVHC revision on <a href="http://www.commscope.com/ProductCompliance">www.commscope.com/ProductCompliance</a>
ROHS	Compliant
UK-ROHS	Compliant