

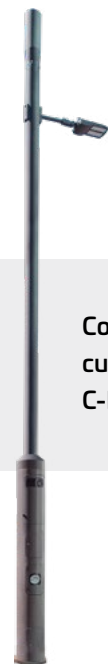
## Accelerate 5G rollouts with customizable, concealed Metro Cell C-band solutions from CommScope



**The C-band spectrum creates new opportunities for mobile operators to quickly add the network capacity and spectral efficiency to jump-start their 5G initiatives.**

To do this, they can begin integrating C-band in their small cell deployments while meeting local design regulations. But C-band radios are vendor specific—differing in size and footprint. Operators need a quality Metro Cell solution that accommodates nearly any OEM radio and can be deployed quickly using a variety of purpose-designed concealment options.

CommScope's Metro Cell portfolio features customizable C-band solutions designed to house and conceal C-band radios from nearly any OEM. As a fully integrated solution, CommScope Metro Cells also feature complete, modular platforms to simplify architectures, and can be deployed as pole tops, mid-pole enclosures, integrated poles, strand-mounted solutions and more. Each can be customized with various color, height, luminaire and mounting options, for a best-fit, site-specific solution that is aesthetically pleasing to even the most selective municipality.



**Completely customizable C-Band Solutions**

# All the C-band performance and coverage you need—hidden in plain sight

CommScope Metro Cell integrated C-band solutions make it easy for mobile operators and their installer partners to leverage the capacity and spectrum benefits of C-band. From the vendor-agnostic design to a range of customization options, these integrated Metro Cell solutions are designed to accelerate zoning and deployment in any environment. Designed, engineered and supported by CommScope, you know these solutions are built to perform—year after year after year.

## Accelerated zoning and deployment

- Compact stealth housing reduces visual impact and eases zoning issues
- Uniform dimensions reduce re-zoning/re-permitting, simplifying future upgrades
- Integrated solution includes power, antenna, cabling, mounting structure
- Arrives on-site ready for deployment

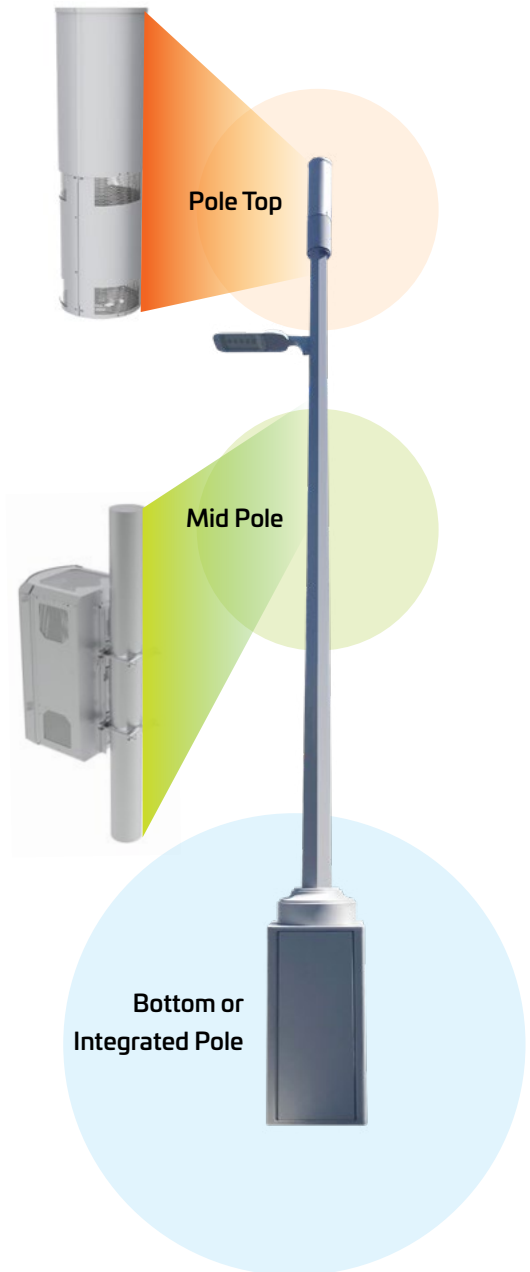
## Customized optimization

- Accommodates C-band radios from nearly any OEM
- Customizable, fully integrated solutions simplify ordering and streamline inventories
- Fast factory customizations include various colors, heights, luminaire designs and pole options

## We've got your back

CommScope's 40+ years of experience as an industry pioneer reflects our deep understanding of where the wireless market has been and where it's heading. We match that experience with a global presence that enables us to serve customers in over 150 countries. From structural and thermal engineering, cables, and interconnects to power systems and the entire RF path, we bring all our expertise and resources to bear on solving your toughest network challenges. All of this is reflected in CommScope's Metro Cell C-band solutions.

For more information on CommScope's innovative line of Metro Cell solutions that are C-band ready, please reach out to your local CommScope representative today or email us at [Steel.Products@CommScope.com](mailto:Steel.Products@CommScope.com)



CommScope pushes the boundaries of communications technology with game-changing ideas and ground-breaking discoveries that spark profound human achievement. We collaborate with our customers and partners to design, create and build the world's most advanced networks. It is our passion and commitment to identify the next opportunity and realize a better tomorrow. Discover more at [commscope.com](http://commscope.com)

[commscope.com](http://commscope.com) | Visit our website or contact your local CommScope representative for more information.

© 2022 CommScope, Inc. All rights reserved. All trademarks identified by ™ or ® are trademarks or registered trademarks in the U.S. and may be registered in other countries. All product names, trademarks and registered trademarks are property of their respective owners. This document is for planning purposes only and is not intended to modify or supplement any specifications or warranties relating to CommScope products or services.