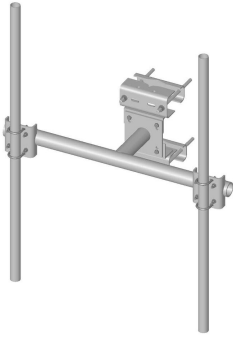


# SF-DPM2-72

---



Co-location Dual Pipe Mount Kit; includes (2) 2-3/8 in OD x 72 in pipes

## Product Classification

**Product Type** Co-location dual pipe mount kit

## General Specifications

**Mounting** Angle 60°, 203.2 mm (8 in) | Angle 90°, 152.4 mm (6 in) | Straight or tapered legs up to 203.2 mm (8 in) OD

**Note** Two 72 in x 8 in panel antenna per sector

**Pipe, quantity** 2

**Tower Taper** Non-tapered | Tapered

## Dimensions

**Height** 72 in | 1,828.8 mm

**Face Width** 4.8 ft | 1.463 m

**Width** 57 in | 1,447.8 mm

**Length** 1.3 ft | 0.396 m

**Pipe Length** 72 in | 1,828.8 mm

**Face Support Pipe Diameter** 3.5 in | 88.9 mm

**Mounting Diameter, maximum** 8 in | 203.2 mm

**Mounting Diameter, minimum** 0 in | 0 mm

**Pipe Outer Diameter** 2.4 in | 60.96 mm

**Stand-off Distance** 15.4 in | 391.16 mm

## Material Specifications

**Material Type** Hot dip galvanized steel

## Mechanical Specifications

# SF-DPM2-72

---

<b>Wind Rating</b>	120 mph (BWS) at 150 ft AGL   140 mph (3-second gust) at 150 ft AGL using Exposure D per FBC
<b>Wind Rating Test Method</b>	TIA/EIA-222

## Packaging and Weights

<b>Included</b>	Clamps   Frame   Pipe mounts   Pipes   Saddle mounts
<b>Packaging quantity</b>	1
<b>Weight, net</b>	115.5 kg   254.634 lb

## Regulatory Compliance/Certifications

<b>Agency</b>	<b>Classification</b>
ISO 9001:2015	Designed, manufactured and/or distributed under this quality management system



## \* Footnotes

<b>Wind Rating</b>	BWS—Base Wind Speed; FBC—Florida Building Code
--------------------	--