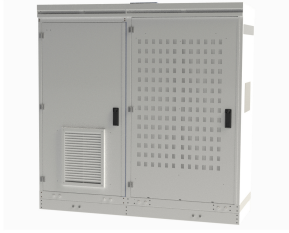


A-VF1-EX01L



DerbyPlus Cabinet Ericsson Fitout 1

DerbyPlus cabinet is a comprised of Derby and PSC cabinet. Derby Cabinet with rails and brackets fitted to accommodate up to 6 Ericsson Radios and PSC cabinet with internal racking to house upto 3 BBU's and transmission. The following features are included in the cabinet:

- 3U Eltek PSU (Plus Section)
- 2 No. 4kW Rectifiers (Plus Section)
- 1 No. 100Ah Battery (Plus Section)
- 12-way DCDU for Ericsson Radios (Plus Section)
- 3-way SPD Protected DCDU for Pole Mounted 4G Radios (Plus Section)
- Compression Gland for Cable Entry
- 3 No. GPS Windows(2 No. in Derby and 1 No. in PSC)

Product Classification

Regional Availability EMEA

Product Type Outdoor cabinet

General Specifications

Access Front and Rear (PSC) | Single Door (Derby)

Accessories Cable plate | External alarm connection | Hangers | In-ground root | Plinth

Cabinet Type Baseband cabinet | Combiner cabinet | Power cabinet | Radio cabinet | Transmission cabinet

Cable Entry Location Bottom

Color Green (RAL 6009) | Light Gray (RAL 7035) | Others available at additional cost

Cooling 175 mm fan (1), (PSU) | 175 mm fan (2), (Derby)

Door Security Internal door contact for front door (Derby) | Internal door contact for front door (PSC) | Swing handle with European cylinder for front door (Derby) | Swing handle with European cylinder for front door (PSC)

Door Type, front Non-removable with included key lock (Derby) | Non-removable with included key lock (PSC)

Door, quantity 3

Front Door Type Single hinged

Lock Type Internal latch for rear door (PSC) | Key lock for front door (Derby) | Key lock for front door (PSC)

Mounting In-ground root | Plinth

Radios Included None

A-VF1-EX01L

Dimensions

Height	1,721.866 mm 67.79 in
Width	1,899.92 mm 74.8 in
Depth	599.948 mm 23.62 in

Material Specifications

Finish	Powder coated
Material Type	Galvanized steel

Environmental Specifications

Qualification Standards	IP33 (Derby) IP54 (PSC)
--------------------------------	---------------------------

Packaging and Weights

Weight, net	299.997 kg 661.38 lb
--------------------	------------------------