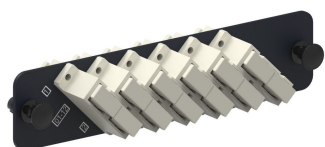


Adapter Pack, Black, 1000-Type, with 6 OptiSPEED® Multimode duplex SC adapters, beige



## Product Classification

|                              |   |
|------------------------------|---|
| <b>Regional Availability</b> | Asia   Australia/New Zealand   EMEA   Latin America   North America |
| <b>Portfolio</b>             | CommScope®  |
| <b>Product Type</b>          | Fiber adapter pack  |
| <b>Product Brand</b>         | OptiSPEED®  |
| <b>Product Series</b>        | 1000-style  |

## General Specifications

|                                    |   |
|------------------------------------|---|
| <b>Application</b>                 | Used in conjunction with G2 1U, 2U and 4U adapter panel shelves, surface mount and raised floor enclosures   Used in conjunction with panels and enclosures (rack, wall, and floor mount) that accept 1000 style panels |
| <b>Adapter Color</b>               | Beige   |
| <b>Adapter Cutout, quantity</b>    | 12  |
| <b>Adapters, quantity</b>          | 6   |
| <b>Body Style</b>                  | Duplex  |
| <b>Interface</b>                   | SC/UPC  |
| <b>Pigtails Included, quantity</b> | 0   |
| <b>Shuttered</b>                   | No  |
| <b>Total Ports, quantity</b>       | 6   |

## Optical Specifications

|                   |           |
|-------------------|-----------|
| <b>Fiber Mode</b> | Multimode |
|-------------------|-----------|

## Regulatory Compliance/Certifications

| Agency | Classification |
|--------|----------------|
|--------|----------------|

# 760021790 | PNL-BK-012-MFA-SC02-BG

---

|               |  |
|---------------|--|
| CHINA-ROHS    | Below maximum concentration value  |
| ISO 9001:2015 | Designed, manufactured and/or distributed under this quality management system   |
| REACH-SVHC    | Compliant as per SVHC revision on <a href="http://www.commscope.com/ProductCompliance">www.commscope.com/ProductCompliance</a> |
| ROHS          | Compliant  |



## Included Products

|             |   |   |
|-------------|---|---|
| 700004880   | – | OptiSPEED® SC Duplex Adapter, Beige, Single |
| MFA-SC02-BG |   | Pack  |