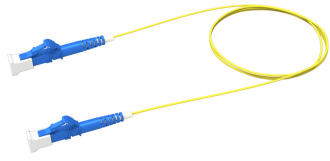


AFGLFLFL1

Base Product



Fiber Patch Cord, Singlemode G.657.A2, Grade B, LC/UPC to LC/UPC, Simplex, 1.6 mm LSZH jacket

Product Classification

| | |
|------------------------------|---|
| Regional Availability | Asia Australia/New Zealand Europe Latin America Middle East /Africa North America |
| Portfolio | CommScope® |
| Product Type | Fiber patch cord, simplex |
| Product Series | AFG |

General Specifications

| | |
|-------------------------------|-----------|
| Connector A, quantity | 1 |
| Color, connector A | Blue |
| Connector B, quantity | 1 |
| Color, connector B | Blue |
| Interface, Connector A | LC/UPC |
| Interface, Connector B | LC/UPC |
| Total Fibers, quantity | 1 |
| Transmission Standards | IEC 61755 |

Dimensions

| | |
|---|-------------------|
| Cable Assembly Length Range (m) | 1 – 999 |
| Cable Assembly Length Range (ft) | 1 – 999 |
| Diameter Over Jacket | 1.6 mm 0.063 in |

Ordering Tree

AFGLFLFL1



Mechanical Specifications

| | |
|--|-------------------------|
| Minimum Bend Radius, loaded | 50 mm 1.969 in |
| Minimum Bend Radius, unloaded | 30 mm 1.181 in |
| Tensile Load, long term, maximum | 33 N 7.419 lbf |
| Tensile Load, short term, maximum | 110 N 24.729 lbf |
| Cable Crush Resistance, maximum | 3.5 N/mm 19.986 lb/in |
| Mating Durability, maximum | 0.2 dB @ 500 cycles |

Optical Specifications

| | |
|---|---------------------------|
| Fiber Mode | Singlemode |
| Fiber Type | G.657.A2, TeraSPEED® |
| Performance Grade | IEC Random Mating Grade B |
| Insertion Loss, maximum, connector A | 0.25 dB |
| Insertion Loss, maximum, connector B | 0.25 dB |
| Return Loss, minimum, connector A | 50 dB |
| Return Loss, minimum, connector B | 50 dB |

Environmental Specifications

| | |
|------------------------------|-------------------------------------|
| Operating Temperature | -20 °C to +60 °C (-4 °F to +140 °F) |
| Environmental Space | Dual Rated LSZH/Riser |

Packaging and Weights

| | |
|---------------------------|---|
| Packaging quantity | 1 |
|---------------------------|---|

Regulatory Compliance/Certifications

AFGLFLFL1

Agency

CHINA-ROHS

ISO 9001:2015

ROHS

UK-ROHS



Classification

Below maximum concentration value

Designed, manufactured and/or distributed under this quality management system

Compliant

Compliant/Exempted

Included Products

- 460159816 – Fiber indoor cable, Low Smoke Zero Halogen YL G.657 .A2, 1 fiber, Singlemode G.657.A2, 1.6 mm diameter, Feet jacket marking, Yellow jacket color
- 860637435 – LC/UPC Connector, Singlemode, Blue, Short Boot

* Footnotes

Performance Grade Guarantee to meet IEC 61755-1 Random Mating requirement

460159816

Fiber indoor cable, Low Smoke Zero Halogen YL G.657 .A2, 1 fiber, Singlemode G.657.A2, 1.6 mm diameter, Feet jacket marking, Yellow jacket color

Product Classification

| | |
|------------------------------|---|
| Regional Availability | Asia Australia/New Zealand EMEA Latin America North America |
| Portfolio | CommScope® |
| Product Type | Fiber indoor cable |
| Product Series | L-MP |

General Specifications

| | |
|---------------------------|---------|
| Cable Type | Cordage |
| Inner Jacket Color | Yellow |
| Jacket Color | Yellow |
| Jacket Marking | Feet |
| Total Fiber Count | 1 |

Dimensions

| | |
|-----------------------------|-------------------|
| Diameter Over Jacket | 1.6 mm 0.063 in |
|-----------------------------|-------------------|

Optical Specifications

| | |
|-------------------|---------------------------------|
| Fiber Type | G.657.A2 G.657.A2, TeraSPEED® |
|-------------------|---------------------------------|

Environmental Specifications

| | |
|---------------------------------|--------------------------------------|
| Installation temperature | -20 °C to +60 °C (-4 °F to +140 °F) |
| Operating Temperature | -20 °C to +70 °C (-4 °F to +158 °F) |
| Storage Temperature | -40 °C to +70 °C (-40 °F to +158 °F) |
| Environmental Space | Low Smoke Zero Halogen (LSZH) |

Environmental Test Specifications

| | |
|--------------------------|-------------------------------------|
| Heat Age | -20 °C to +85 °C (-4 °F to +185 °F) |
| Low High Bend | -20 °C to +70 °C (-4 °F to +158 °F) |
| Temperature Cycle | -20 °C to +70 °C (-4 °F to +158 °F) |

Packaging and Weights

460159816

Cable weight 3.6 kg/km | 2.419 lb/kft

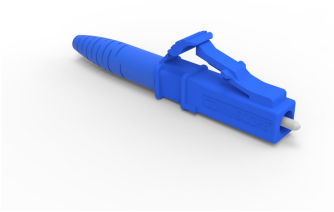
Regulatory Compliance/Certifications

| Agency | Classification |
|---------------|--|
| CHINA-ROHS | Below maximum concentration value |
| REACH-SVHC | Compliant as per SVHC revision on www.commscope.com/ProductCompliance |
| ROHS | Compliant |
| UK-ROHS | Compliant |



* Footnotes

Operating Temperature Specification applicable to non-terminated bulk fiber cable



LC/UPC Connector, Singlemode, Blue, Short Boot

Product Classification

| | |
|------------------------------|---|
| Regional Availability | Asia Australia/New Zealand EMEA Latin America North America |
| Portfolio | CommScope® |
| Product Type | Fiber connector |

General Specifications

| | |
|-----------------------|--------|
| Color, boot | Blue |
| Color, housing | Blue |
| Interface | LC/UPC |

Dimensions

| | |
|---------------|--------------------|
| Length | 41.6 mm 1.638 in |
|---------------|--------------------|

Material Specifications

| | |
|-------------------------|----------|
| Ferrule Material | Zirconia |
|-------------------------|----------|

Mechanical Specifications

| | |
|--|----------------|
| Cable Retention Strength, maximum | 11.24 lb @ 0 ° |
|--|----------------|

Optical Specifications

| | |
|---|---------------------------------|
| Fiber Mode | Singlemode |
| Insertion Loss Change, mating | 0.2 dB |
| Optical Components Standard | ANSI/TIA-568. 3-D IEC 61753-1 |
| Insertion Loss Change, temperature | 0.3 dB |
| Insertion Loss, maximum | 0.25 dB |
| Return Loss, minimum | 55 dB |

Regulatory Compliance/Certifications

860637435

Agency

CHINA-ROHS

ROHS

UK-ROHS

Classification

Below maximum concentration value

Compliant

Compliant

*** Footnotes****Insertion Loss Change, mating**

TIA-568: Maximum insertion loss change after 500 matings

Insertion Loss Change, temperature

Maximum insertion loss change from -10 °C to +60 °C (+14 °F to +140 °F)