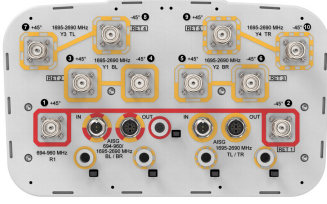


RV4-65D-R5-V2



10-port sector antenna, 2x 694–960 and 8x 1695–2690 MHz, 65° HPBW, 5x RET with manual override

- All Internal RET actuators are connected in “Cascaded SRET” configuration
- Uses the 4.3-10 connector which is 40 percent smaller than the 7-16 DIN connector
- Integrated Internal Remote Electrical Tilt (RET), with independent control of electrical tilt with manual override on all arrays

This product will be discontinued on: November 30, 2024

Replaced By:

RV4-65D-R5-V6

10-port sector antenna, 2x 694–960 and 8x 1695–2690 MHz, 65° HPBW, 5x RET

General Specifications

Antenna Type	Sector
Band	Multiband
Color	Light Gray (RAL 7035)
Grounding Type	RF connector inner conductor and body grounded to reflector and mounting bracket
Performance Note	Outdoor usage Wind loading figures are validated by wind tunnel measurements described in white paper WP-112534-EN
Radome Material	Fiberglass, UV resistant
Reflector Material	Aluminum
RF Connector Interface	4.3-10 Female
RF Connector Location	Bottom
RF Connector Quantity, high band	8
RF Connector Quantity, low band	2
RF Connector Quantity, total	10

Remote Electrical Tilt (RET) Information

RET Interface	4x 8 pin connector as per IEC 60130-9 Daisy chain in: Male / Daisy chain out: Female Pin3: RS485A(AISG_B), Pin5: RS485B(AISG_A), Pin6: DC 10~30V, Pin7: DC_Return
RET Interface, quantity	2 female 2 male
Input Voltage	10–30 Vdc

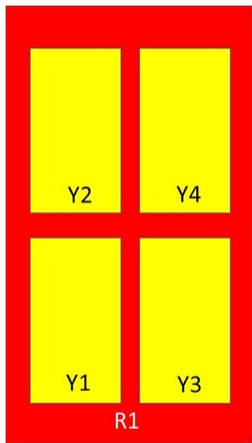
RV4-65D-R5-V2

Internal RET	High band (4) Low band (1)
Power Consumption, active state, maximum	8 W
Power Consumption, idle state, maximum	1 W
Protocol	3GPP/AISG 2.0 (Single RET)

Dimensions

Width	350 mm 13.78 in
Depth	208 mm 8.189 in
Length	2688 mm 105.827 in
Net Weight, without mounting kit	34 kg 74.957 lb

Array Layout



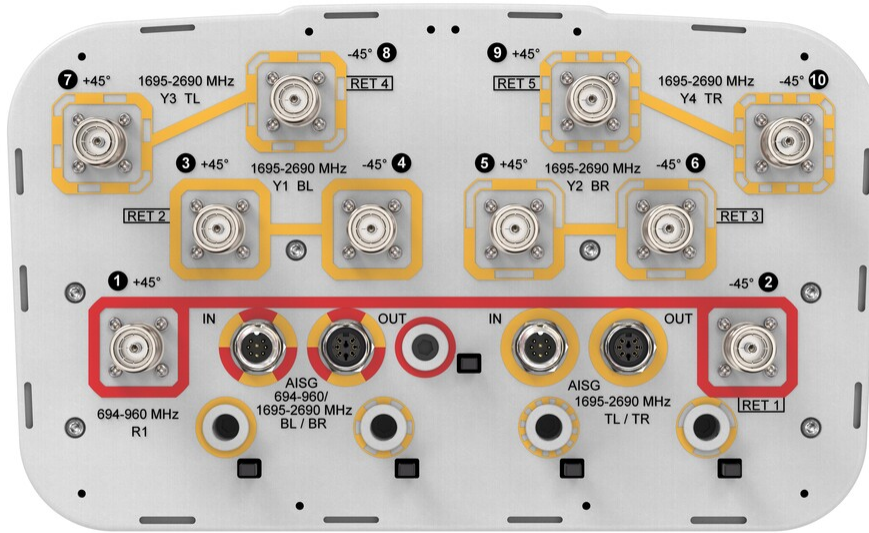
Array	Freq (MHz)	Conns	RET (SRET)	AISG RET UID
R1	694-960	1-2	1	CPxxxxxxxxxxxxxxxxx1
Y1	1695-2690	3-4	2	CPxxxxxxxxxxxxxxxxx2
Y2	1695-2690	5-6	3	CPxxxxxxxxxxxxxxxxx3
Y3	1695-2690	7-8	4	CPxxxxxxxxxxxxxxxxx4
Y4	1695-2690	9-10	5	CPxxxxxxxxxxxxxxxxx5

Left Right
Bottom

(Sizes of colored boxes are not true depictions of array sizes)

Port Configuration

RV4-65D-R5-V2



Electrical Specifications

Impedance	50 ohm
Operating Frequency Band	1695 – 2690 MHz 694 – 960 MHz
Polarization	±45°
Total Input Power, maximum	800 W @ 50 °C

Electrical Specifications

Frequency Band, MHz	694–790	790–890	890–960	1695–1880	1920–2200	2300–2500	2500–2690
Gain, dBi	16.7	17.2	17.4	16.8	17.4	18.1	18.1
Beamwidth, Horizontal, degrees	67	65	62	62	63	62	61
Beamwidth, Vertical, degrees	8.2	7.3	6.7	7.5	6.5	5.7	5.3
Beam Tilt, degrees	0–10	0–10	0–10	2–12	2–12	2–12	2–12
USLS (First Lobe), dB	17	21	21	15	16	15	16
Front-to-Back Ratio at 180°, dB	31	36	36	31	34	35	34
Isolation, Cross Polarization, dB	28	28	28	28	28	28	28
Isolation, Inter-band, dB	30	30	30	30	30	30	30
VSWR Return loss, dB	1.5 14.0	1.5 14.0	1.5 14.0	1.5 14.0	1.5 14.0	1.5 14.0	1.5 14.0
PIM, 3rd Order, 2 x 20 W, dBc	-150	-150	-150	-150	-150	-150	-150

RV4-65D-R5-V2

Input Power per Port at 50°C, maximum, watts	250	250	250	200	200	200	200
---	-----	-----	-----	-----	-----	-----	-----

Electrical Specifications, BASTA

Frequency Band, MHz	694–790	790–890	890–960	1695–1880	1920–2200	2300–2500	2500–2690
Gain by all Beam Tilts, average, dBi	16.4	17	17.3	16.3	17	17.7	17.7
Gain by all Beam Tilts Tolerance, dB	±0.3	±0.3	±0.3	±0.7	±0.6	±0.5	±0.5
Beamwidth, Horizontal Tolerance, degrees	±1	±2.1	±1.6	±3.4	±2.4	±3.5	±3.3
Beamwidth, Vertical Tolerance, degrees	±0.5	±0.4	±0.3	±0.5	±0.5	±0.3	±0.3
USLS, beampeak to 20° above beampeak, dB	15	16	16	13	14	14	13
Front-to-Back Total Power at 180° ± 30°, dB	26	25	25	26	26	27	26
CPR at Boresight, dB	18	19	18	19	20	24	20
CPR at Sector, dB	10	10	11	10	10	7	8

Mechanical Specifications

Wind Loading @ Velocity, frontal	477.0 N @ 150 km/h (107.2 lbf @ 150 km/h)
Wind Loading @ Velocity, lateral	409.0 N @ 150 km/h (91.9 lbf @ 150 km/h)
Wind Loading @ Velocity, maximum	1,010.0 N @ 150 km/h (227.1 lbf @ 150 km/h)
Wind Loading @ Velocity, rear	506.0 N @ 150 km/h (113.8 lbf @ 150 km/h)
Wind Speed, maximum	241 km/h (150 mph)

Packaging and Weights

Width, packed	460 mm 18.11 in
Depth, packed	350 mm 13.78 in
Length, packed	2830 mm 111.417 in
Weight, gross	50.5 kg 111.333 lb

Regulatory Compliance/Certifications

Agency	Classification
CHINA-ROHS	Above maximum concentration value
ISO 9001:2015	Designed, manufactured and/or distributed under this quality management system

RV4-65D-R5-V2

ROHS Compliant/Exempted

UK-ROHS Compliant/Exempted



Included Products

- BSAMNT-3 – Wide Profile Antenna Downtilt Mounting Kit for 2.4 - 4.5 in (60 - 115 mm) OD round members. Kit contains one scissor top bracket set and one bottom bracket set.

* Footnotes

Performance Note Severe environmental conditions may degrade optimum performance