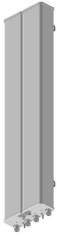


VVPX310R-V5



4-port sector antenna, 4x 1710–2690 MHz, 65° HPBW, 2x RET with manual override

- Integrated Internal Remote Electrical Tilt (RET), with independent control of electrical tilt with manual override on all arrays

Alternative products available:

VV-65A-R1B

4-port sector antenna, 4x 1695–2690 MHz, 65° HPBW, 1x RET and 1x SBT, the two highband arrays utilize a common tilt.

General Specifications

Antenna Type	Sector
Band	Single band
Grounding Type	RF connector inner conductor and body grounded to reflector and mounting bracket
Performance Note	Outdoor usage
Radome Material	ASA, UV stabilized
RF Connector Interface	7-16 DIN Female
RF Connector Location	Bottom
RF Connector Quantity, high band	4
RF Connector Quantity, total	4

Remote Electrical Tilt (RET) Information

RET Interface	8-pin DIN Female 8-pin DIN Male
RET Interface, quantity	1 female 1 male
Input Voltage	10–30 Vdc
Internal RET	High band (2)
Power Consumption, idle state, maximum	2 W
Power Consumption, normal conditions, maximum	13 W
Protocol	3GPP/AISG 2.0 (Single RET)

Dimensions

Width	290 mm 11.417 in
--------------	--------------------

VVPX310R-V5

Depth	103 mm 4.055 in
Length	1328 mm 52.283 in
Net Weight, without mounting kit	12.5 kg 27.558 lb

Electrical Specifications

Impedance	50 ohm
Operating Frequency Band	1710 – 2690 MHz
Polarization	±45°

Electrical Specifications

Frequency Band, MHz	1710–1920	1920–2180	2300–2690
Gain, dBi	17	17.7	18.4
Beamwidth, Horizontal, degrees	68	66.8	63
Beamwidth, Vertical, degrees	8.1	7.2	5.9
Beam Tilt, degrees	0–10	0–10	0–10
USLS (First Lobe), dB	19	19	18
Front-to-Back Ratio at 180°, dB	29	30	33
CPR at Boresight, dB	18	18	18
CPR at Sector, dB	13	10	9
Isolation, Cross Polarization, dB	30	30	30
VSWR Return loss, dB	1.5 14.0	1.5 14.0	1.5 14.0
PIM, 3rd Order, 2 x 20 W, dBc	-150	-150	-150
Input Power per Port, maximum, watts	250	250	250

Electrical Specifications, BASTA

Frequency Band, MHz	1710–1920	1920–2180	2300–2690
Gain by all Beam Tilts, average, dBi	16.8	17.4	18
Gain by all Beam Tilts Tolerance, dB	±0.3	±0.5	±0.4
Gain by Beam Tilt, average, dBi	0° 16.8 5° 16.8 10° 16.8	0° 17.4 5° 17.4 10° 17.4	0° 18.2 5° 18.1 10° 17.7
Beamwidth, Horizontal Tolerance, degrees	±2.7	±3.1	±4.5
Beamwidth, Vertical Tolerance, degrees	±0.5	±0.5	±0.5
USLS, beampeak to 20° above beampeak, dB	18	18	18
Front-to-Back Total Power at 180° ± 30°, dB	25	27	30

VVPX310R-V5

CPR at Boresight, dB	19	19	20
CPR at Sector, dB	14	12	11

Mechanical Specifications

Wind Loading @ Velocity, maximum	560.0 N @ 160 km/h (125.9 lbf @ 160 km/h)
Wind Speed, maximum	200 km/h (124 mph)

Packaging and Weights

Width, packed	360 mm 14.173 in
Depth, packed	216 mm 8.504 in
Length, packed	1510 mm 59.449 in

Regulatory Compliance/Certifications

Agency	Classification
CE	Compliant with the relevant CE product directives
CHINA-ROHS	Below maximum concentration value
ISO 9001:2015	Designed, manufactured and/or distributed under this quality management system
REACH-SVHC	Compliant as per SVHC revision on www.commscope.com/ProductCompliance
ROHS	Compliant
UK-ROHS	Compliant



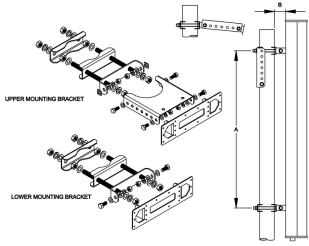
Included Products

T-041-GL-E	-	Adjustable Tilt Pipe Mounting Kit for 2.0"-4.5" (60-115mm) OD round members for panel antennas. Includes 2 clamp sets.
------------	---	--

* Footnotes

Performance Note	Severe environmental conditions may degrade optimum performance
-------------------------	---

T-041-GL-E



Adjustable Tilt Pipe Mounting Kit for 2.0"-4.5" (60-115mm) OD round members for panel antennas. Includes 2 clamp sets.

Product Classification

Product Type Adjustable tilt mounting kit

General Specifications

Application Outdoor

Color Silver

Dimensions

Compatible Length, maximum 1500 mm | 59.055 in

Compatible Length, minimum 1200 mm | 47.244 in

Compatible Diameter, maximum 115 mm | 4.528 in

Compatible Diameter, minimum 60 mm | 2.362 in

Antenna-to-Pipe Distance 85 mm | 3.346 in

Bracket-to-Bracket Distance 976 mm | 38.425 in

Weight, net 5.5 kg | 12.125 lb

Material Specifications

Material Type Galvanized steel

Mechanical Specifications

Mechanical Tilt 0°-12° in steps of 2°

Packaging and Weights

Included Brackets | Hardware

Packaging quantity 1

Regulatory Compliance/Certifications

Agency	Classification
CE	Compliant with the relevant CE product directives

T-041-GL-E

CHINA-ROHS	Below maximum concentration value
ISO 9001:2015	Designed, manufactured and/or distributed under this quality management system
REACH-SVHC	Compliant as per SVHC revision on www.commscope.com/ProductCompliance
ROHS	Compliant
UK-ROHS	Compliant

