

4

3

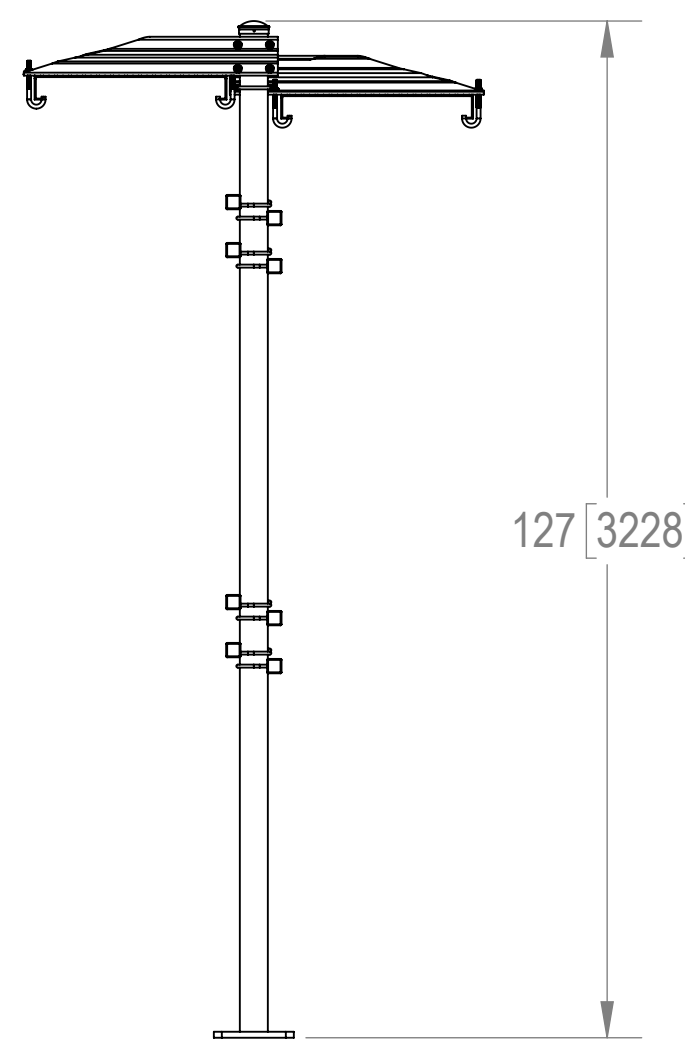
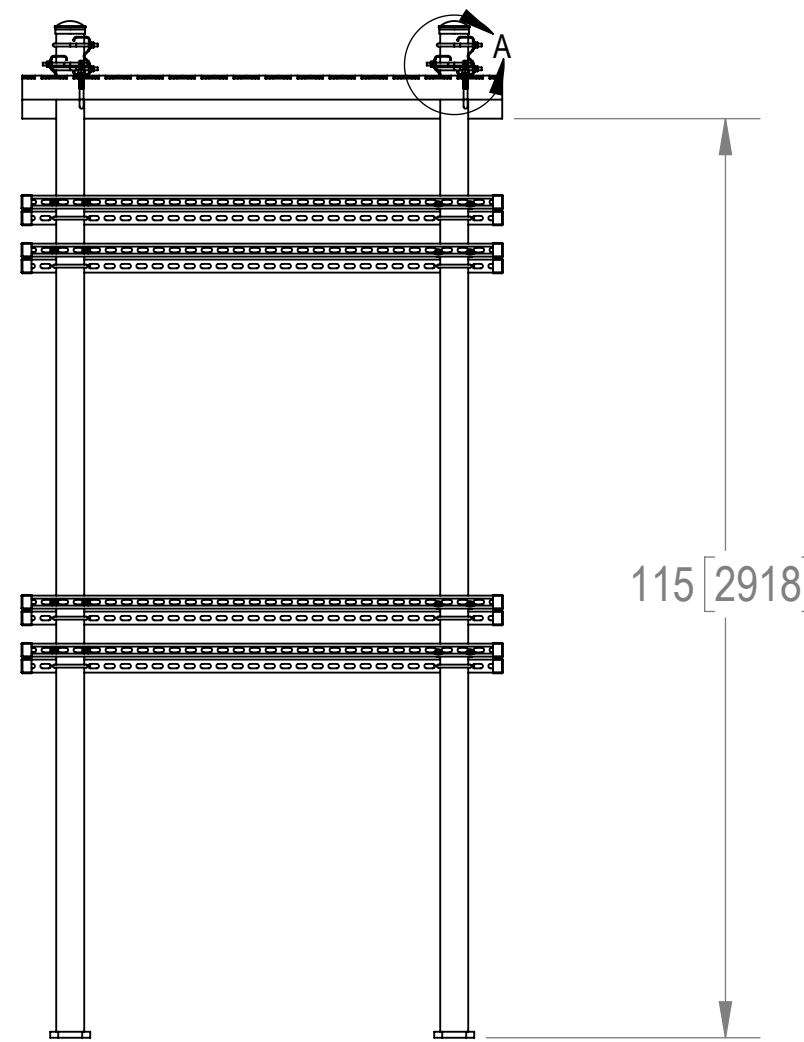
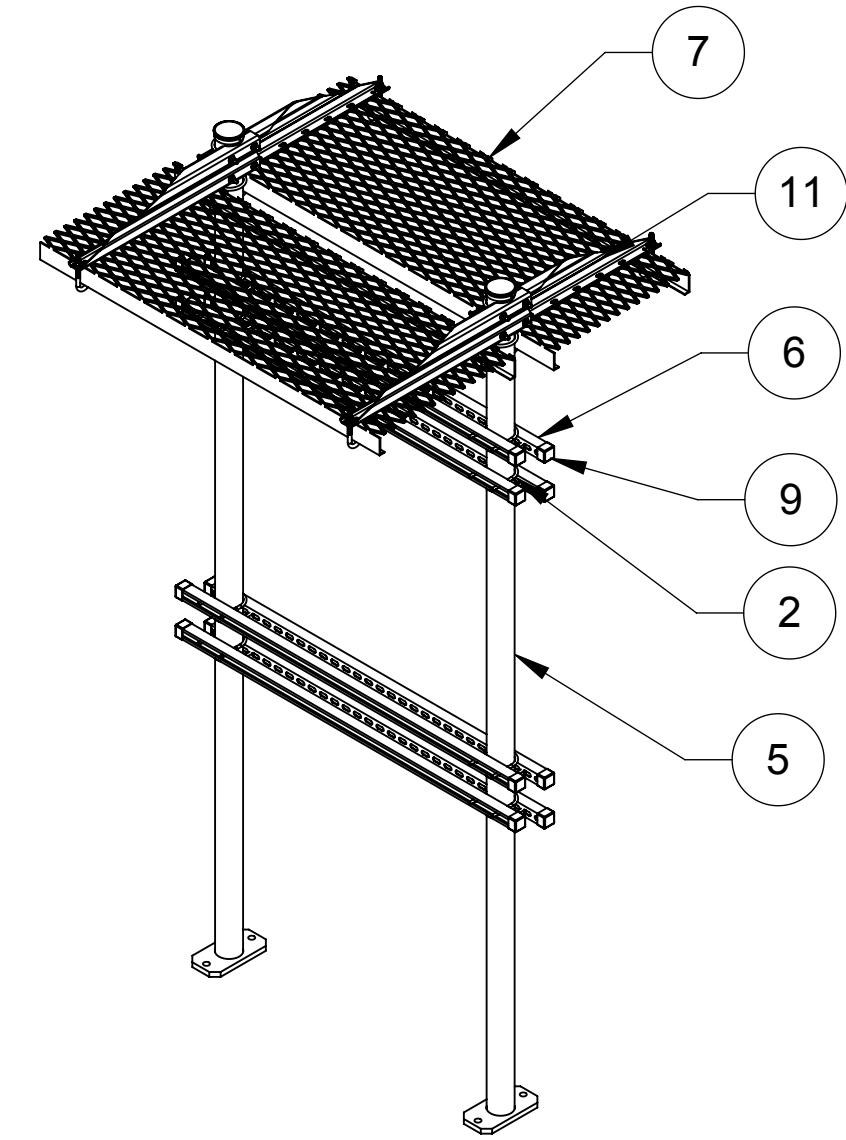
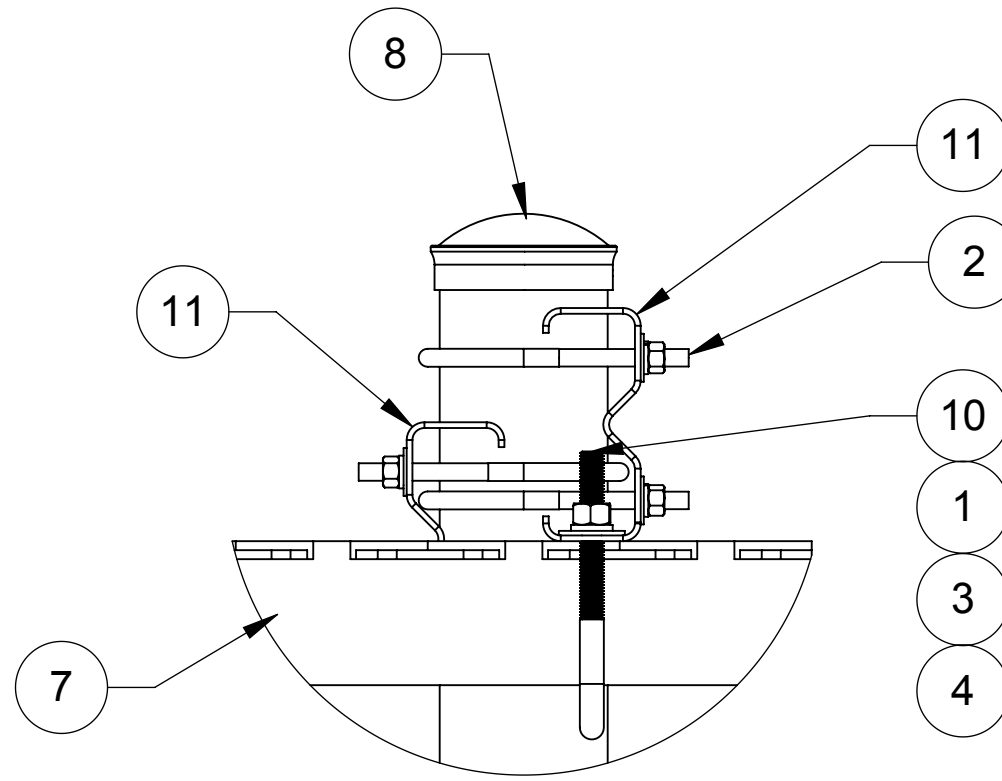
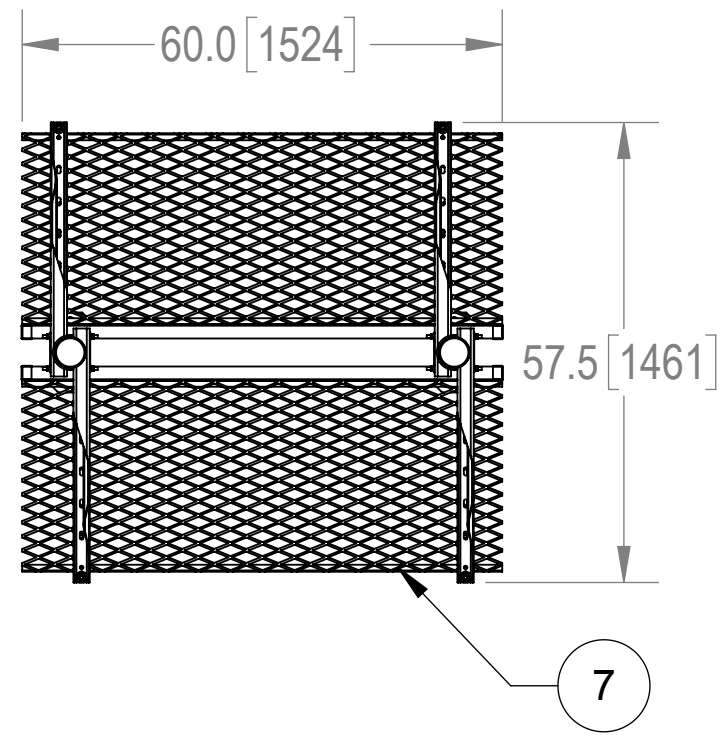
2

1

NOTES:

- 1.0 GENERAL
- 1.1 ALL METRIC DIMENSIONS ARE IN BRACKETS
- 2.0 DESIGN NOTES
- 3.0 MANUFACTURING/SPECIAL REQUIRMENTS
- 4.0 TEST
- 5.0 PACKAGING

REVISIONS				
REV.	ECN	DESCRIPTION	BY	DATE
A	8000034299	INITIAL RELEASE	MRC	03/08/19



ITEM	PART NO.	DESCRIPTION	QTY.	WEIGHT	NOTE NO.
1	GN-04	1/2" GALV HEX NUT	8	0.04 LBS	
2	GUB-3355	3/8" X 3-5/8" X 5-1/4" GALV U-BOLT	24	0.40 LBS	
3	GWL-04	1/2" GALV LOCK WASHER	8	0.01 LBS	
4	GWF-04	1/2" GALV FLAT WASHER	8	0.03 LBS	
5	MF12616510	PIPE COLUMN KIT	2	69.16 LBS	
6	MT50460	SQ. SUPPORT RAIL 60" LONG	8	9.27 LBS	
7	MTC9232.05	SAFETY GRATING 24" X 5'	2	55.50 LBS	
8	PC-034	PIPE CAP 3-1/2"	2	0.66 LBS	
9	PTCR01	END CAP	16	0.05 LBS	
10	WBJB6	1/2" J-BOLT	8	0.41 LBS	
11	WBLB24308	24" WAVEGUIDE BRIDGE SUPPORT BRACKET	4	7.14 LBS	

**COMMSCOPE, INC. OF NORTH CAROLINA**

TOLERANCES		SAP MATERIAL MASTER	
1 PLACE .X ± .25	3 PLACE .XXX ± 0.06	<b>MTC401560HCS</b>	
2 PLACE .XX ± 0.12	ANGLES ± 2°		
FINISH GALV A123		MATERIAL A500, A568, A1011/A1018	
UNLESS OTHERWISE SPECIFIED DIMENSIONS ARE IN INCHES INTERPRET PER ANSI Y 14.5M-1994	NAME	DATE	TITLE
	CE MRC	03/08/19	<b>H-FRAME, 2 POSTS, BASE SHOE</b>
	RW MC1107	03/15/2019	
	RV RD1048	03/15/2019	
RE MC1107	03/15/2019		
ECN 008000034299		SCALE	DOCUMENT NO.
		<b>1:24</b>	<b>MTC401560HCS</b>
SIZE	WORK AREA	MODEL	
<b>C</b>	24		
		DRAWING	
VERSION	STATUS	REVISION	VERSION
00	RE	A	00
		STATUS	
		REVISION	
		A	
			SHEET
			1 OF 2

DENSITY	0.30	lbs/in <sup>3</sup>
MASS	369.53	lbs
VOLUME	1211.86	in <sup>3</sup>
SURFACE AREA		in <sup>2</sup>
HEIGHT		
LENGTH		
WIDTH		

4

3

2

1

4

3

2

1

NOTES:

D

D

C

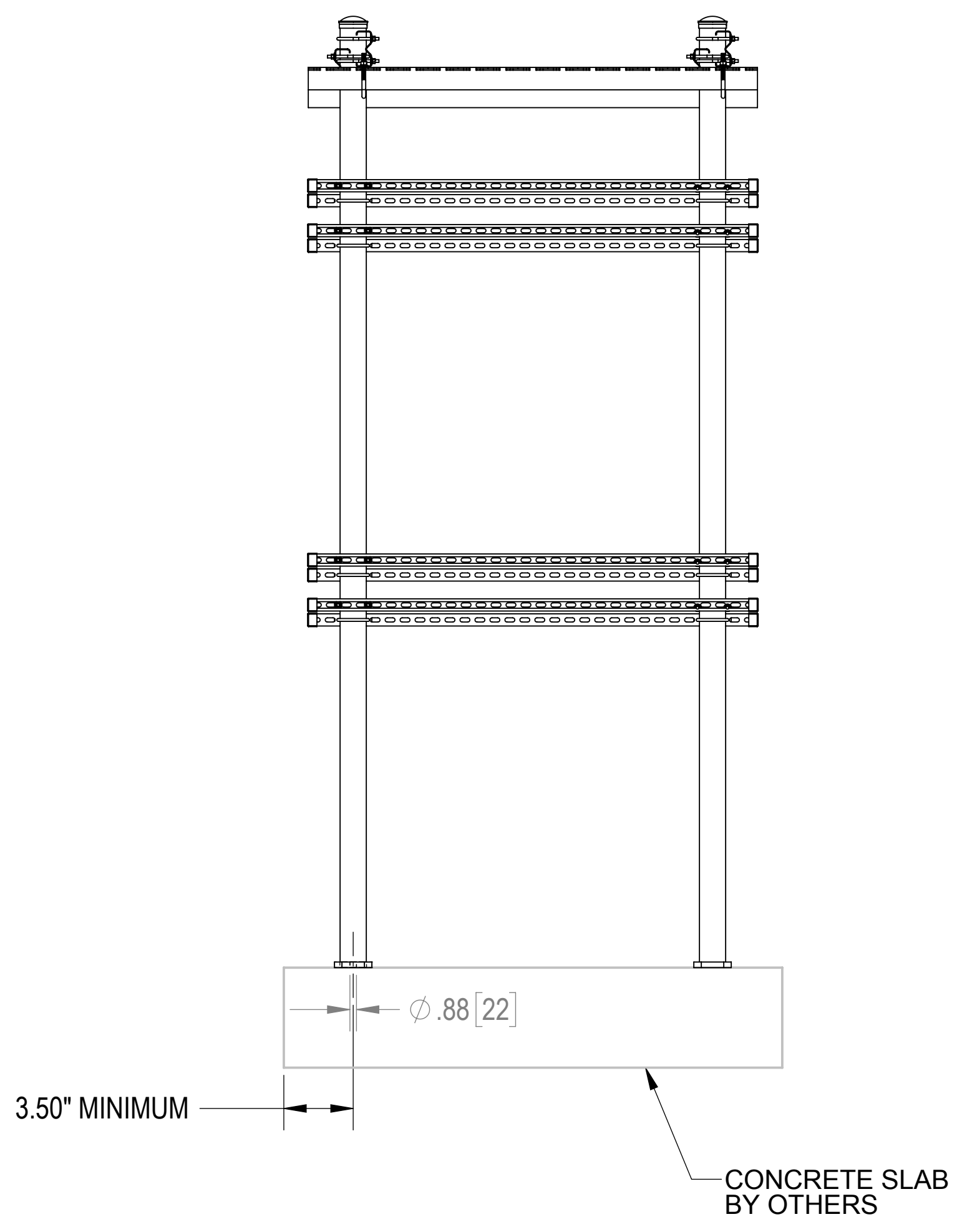
C


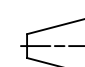
B

B

A

A



COMMSCOPE, INC. OF NORTH CAROLINA				
TITLE H-FRAME, 2 POSTS, BASE SHOE				
SIZE <b>C</b>	SCALE <b>1:16</b>	DOCUMENT NO. <b>MTC401560HCS</b>		
 		DRAWING		SHEET
		VERSION 00	STATUS RE	REVISION A

© 2019 CommScope, Inc. Confidential

4

3

2

1