

## Routing 900µm Pigtails Into the Back of an EHD Panel

### Procedure

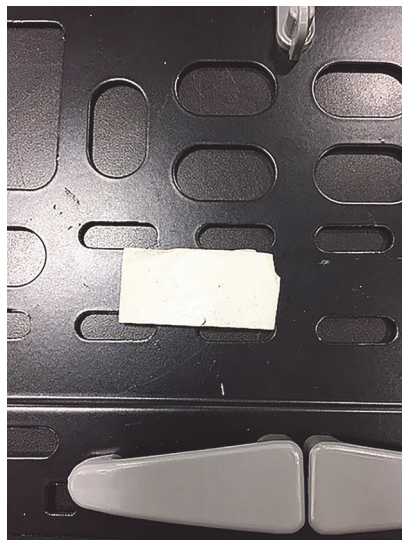
Use the following procedure to route 900µm pigtails into the back of an EHD panel.

1. Mount the EHD (1, 2, or 4ru) in the rack and remove the back cover and hole plugs along both sides of the rear of the panel. (Set them aside to be re-installed later.)

**Note:** If possible, mount the EHD at a comfortable height and move up in the rack after cable installation is finished.



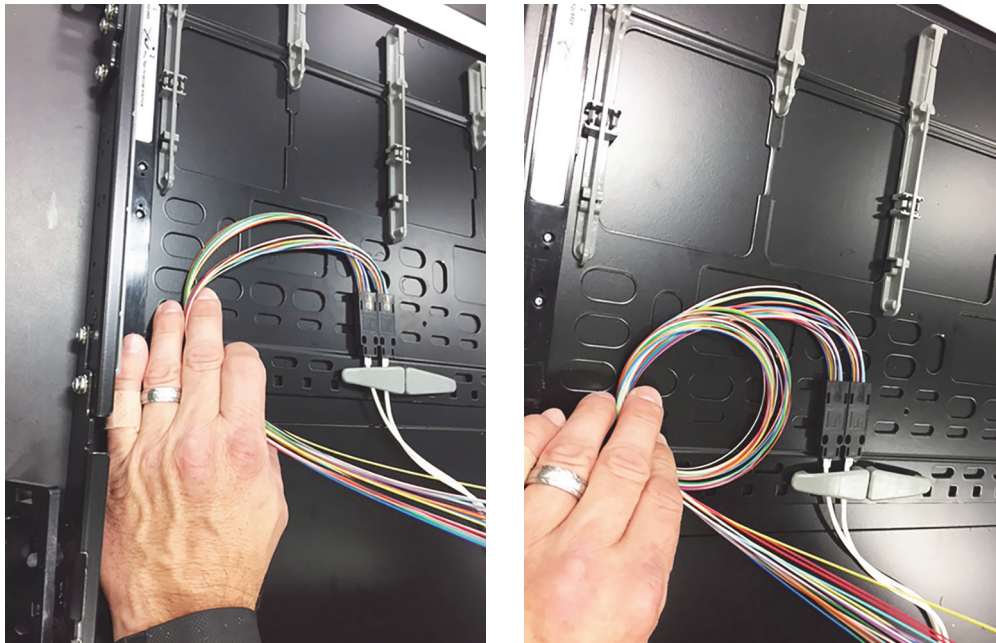
2. Remove the back cover and slide the bottom tray all the way to the back. Add double-sided tape about 1 inch ahead of the gray fiber managers on the tray side you are populating.



3. Route the fibers through the rear side hole on the side you want to enter the panel. Populate both the adapter packs with the fanned-out fibers. Move the fanout so the 3mm cable tails go under the gray tab on the side you are populating and stick them down to the double-sided tape just ahead of the gray fiber managers.

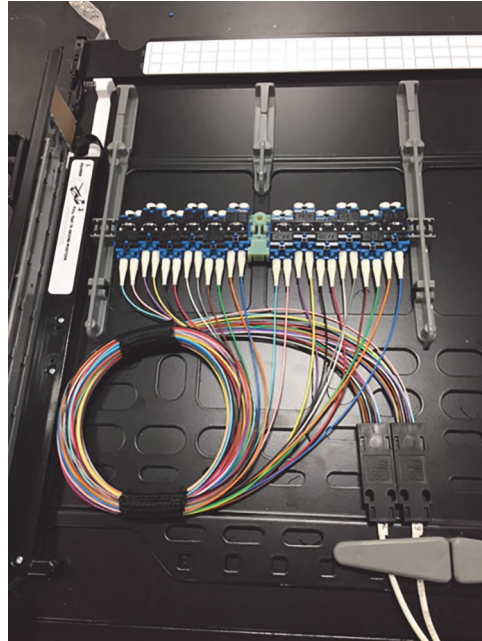
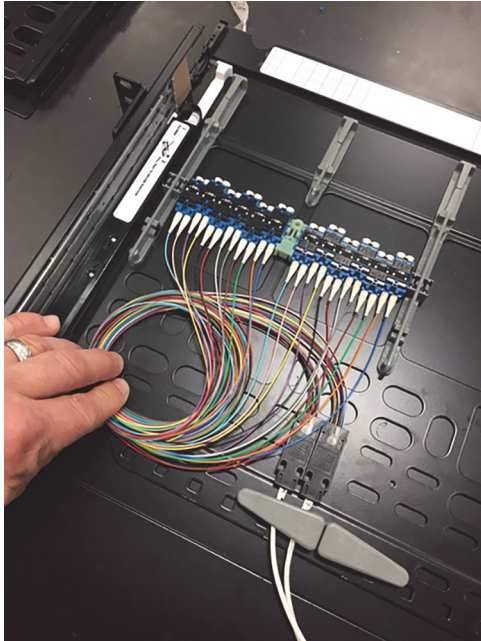


4. Gently start laying the fibers down on the tray (easier with two people) wrapping it around in about a 4 inch circle until you can snap the fiber adapters into place.





5. While holding it all, gently wrap the Velcro around the fibers in two places to hold the fibers securely.



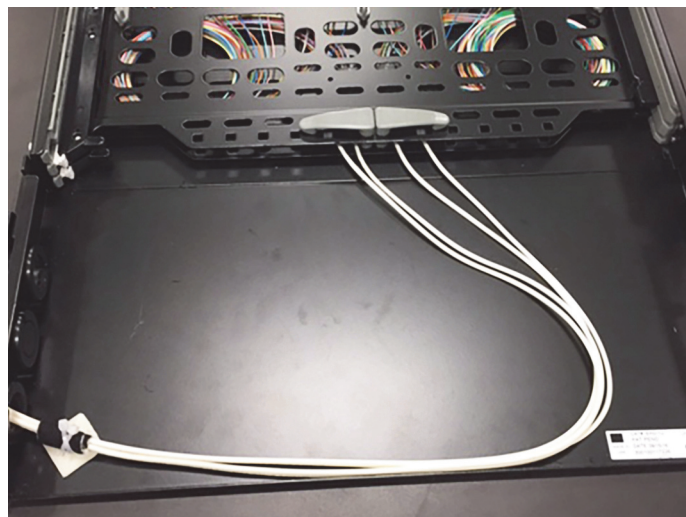
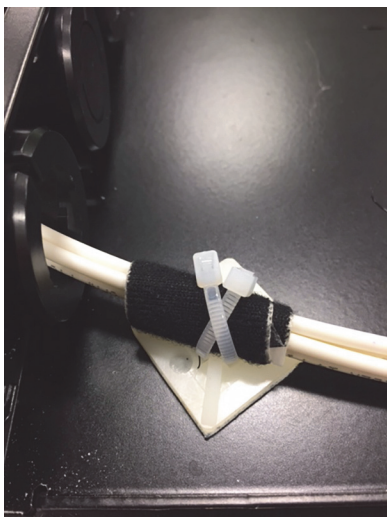
6. Make sure no fibers are sticking up in the air, stretched, or pinched. Repeat procedure for other half of the tray. When finished with both sides, add a piece of yellow tape supplied over the top of the fanouts.



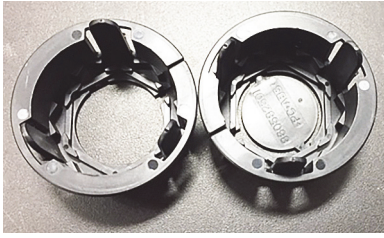
7. Pull out the next tray next tray above and repeat procedure for that tray.



8. When all trays in the chassis are completely populated and pushed back into the chassis, then you can secure the tails, there should be about 25-30 inches of slack of the 3mm cable in the back of the panel. Stick down the cable tie just inside the entry port at a 45 degree angle. Wrap the cables with felt tape and secure cables with two zip ties.



9. Now add the split grommet back around the cable (removing the center plug from it) and push all plugs back in place.



10. Re-attach rear cover back onto the chassis.

## Contact Information

- To find out more about CommScope® products, visit us on the web at [www.commscope.com](http://www.commscope.com)
- For technical assistance, customer service, or to report any missing/damaged parts, visit us at <http://www.commscope.com/SupportCenter>

