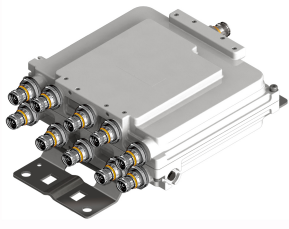


E14F20P05



Ultra Compact Twin Pentaplexer 700-900/1400-1800/2100/2300-2600/3400-3800, dc bypass on all ports, with 4.3-10 connectors

- New Combining Solution to introduce 5G, 3.5GHz band
- Industry leading PIM performance
- New 4.3-10 connectors for improved PIM performance and size reduction
- Suitable for feeders cables reduction
- dc/AISG pass-through on all frequency ports
- Clam shell configuration

Product Classification

Product Type Pentaplexer

General Specifications

Product Family CBC7182126

Color Gray

Common Port Label PORT 0 COM

Modularity 2-Twin

Mounting Pole | Wall

Mounting Pipe Hardware Band clamps (2)

RF Connector Interface 4.3-10 Female

RF Connector Interface Body Style Medium neck

Dimensions

Height 92 mm | 3.622 in

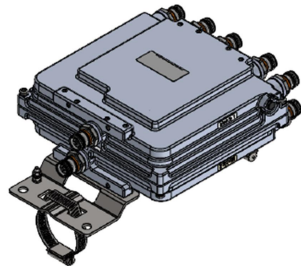
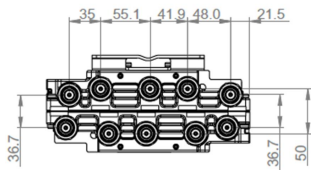
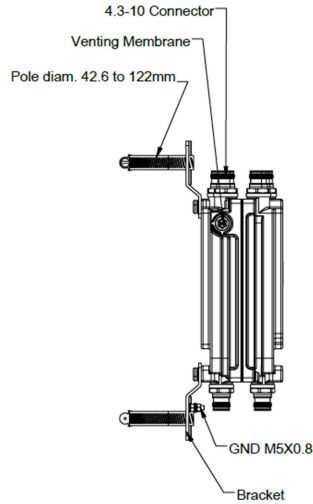
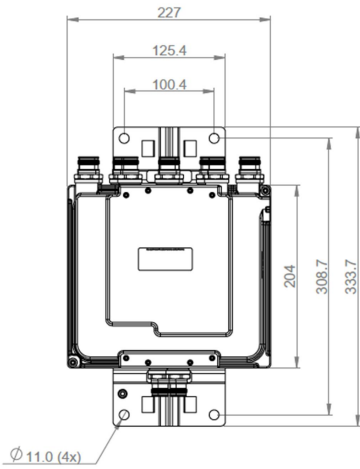
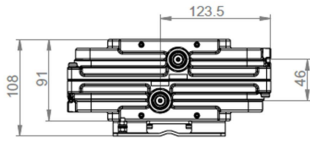
Width 230 mm | 9.055 in

Depth 200 mm | 7.874 in

Mounting Pipe Diameter Range 42.6–122 mm

Outline Drawing

E14F20P05



Electrical Specifications

Impedance	50 ohm
License Band, Band Pass	APT 700 AWS 2000 CEL 850 CEL 900 DCS 1800 EDD 800 IMT 2100 IMT 2600 LMR 800 LMR 900 PCS 1900 SDL 1400 TDD 2600 TDD 3500

Electrical Specifications, dc Power/Alarm

dc/AISG Pass-through Method	Factory set
dc/AISG Pass-through Path	Branch 1 Branch 2 Branch 3 Branch 4 Branch 5
dc/AISG Pass-through, combiner	Branch 1 Branch 2 Branch 3 Branch 4
dc/AISG Pass-through, demultiplexer	Branch 1 Branch 2 Branch 3 Branch 4 Branch 5
Lightning Surge Current	5 kA
Lightning Surge Current Waveform	8/20 waveform

E14F20P05

Electrical Specifications, AISG

AISG Carrier	2176 KHz ± 100 ppm
Insertion Loss, maximum	0.5 dB
Return Loss, minimum	18 dB

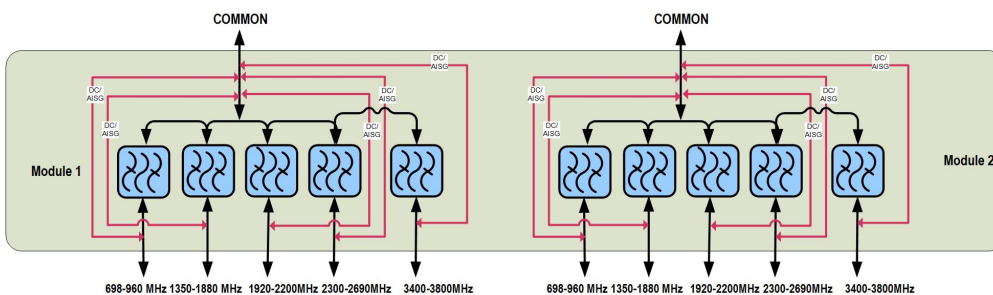
Electrical Specifications

Sub-module	1 2	1 2	1 2	1 2	1 2
Branch	1	2	3	4	5
Port Designation	PORT 1 698-960	PORT 2 1350-1880	PORT 3 1920-2200	PORT 4 2300-2690	PORT 5 3400-3800
License Band	CEL 850, Band Pass CEL 900, Band Pass EDD 800, Band Pass LMR 800, Band Pass LMR 900, Band Pass	SDL 1400, Band Pass DCS 1800, Band Pass	IMT 2100, Band Pass AWS 2000, Band Pass PCS 1900, Band Pass	IMT 2600, Band Pass TDD 2600, Band Pass	TDD 3500, Band Pass

Electrical Specifications, Band Pass

Frequency Range, MHz	698–960	1350–1525 1710–1880	1920–2200	2300–2690	3400–3800
Insertion Loss, maximum, dB	0.4	0.5	0.5	0.4	0.3
Return Loss, minimum, dB	18	18	18	18	18
Isolation, minimum, dB	50	50	50	50	50
Input Power, RMS, maximum, W	100	100	100	100	100
Input Power, PEP, maximum, W	1000	1000	1000	1000	1000
3rd Order PIM, maximum, dBc	-161	-161	-161	-161	-161
3rd Order PIM Test Method	Two +43 dBm carriers	Two +43 dBm carriers	Two +43 dBm carriers	Two +43 dBm carriers	Two +43 dBm carriers

Block Diagram



E14F20P05

Mechanical Specifications

Wind Speed, maximum 241 km/h (150 mph)

Environmental Specifications

Operating Temperature -40 °C to +65 °C (-40 °F to +149 °F)

Relative Humidity 15%–100%

Corrosion Test Method IEC 60068-2-11, 30 days

Ingress Protection Test Method IEC 60529:2001, IP67

Vibration Test Method IEC 60068-2-6

Packaging and Weights

Included Mounting hardware

Volume 4.7 L

Weight, net 5.7 kg | 12.566 lb