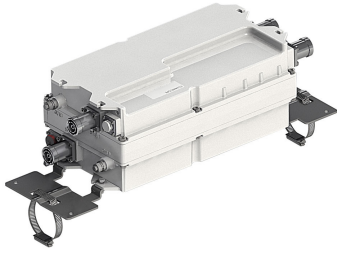


E15Z01P13



Tower Mounted Amplifier, Twin Diplexed Dual Band 850/1900 with AISG

Product Classification

Product Type 1-BTS:2-ANT (Diplex) | Tower mounted amplifier

General Specifications

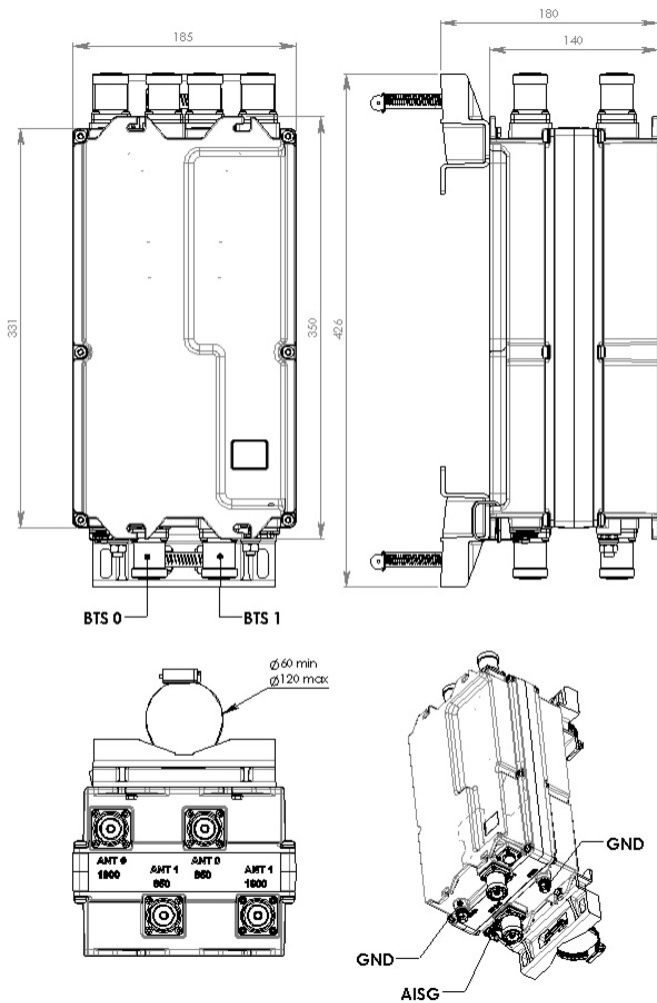
Color Gray
Modularity 2-Twin
Mounting Pipe Hardware Band clamps (2)
RF Connector Interface 7-16 DIN Female
RF Connector Interface Body Style Long neck

Dimensions

Height 330 mm | 12.992 in
Width 184 mm | 7.244 in
Depth 140 mm | 5.512 in
Ground Screw Diameter 6 mm | 0.236 in
Mounting Pipe Diameter Range 50–120 mm

E15Z01P13

Outline Drawing



Electrical Specifications

License Band, LNA CEL 850 | PCS 1900

Electrical Specifications, dc Power/Alarm

| | |
|---|------------------------------|
| dc Switching/Redundancy | No |
| Lightning Surge Current | 5 kA |
| Lightning Surge Current Waveform | 8/20 waveform |
| Operating Current at Voltage | 240 mA @ 12 V 70 mA @ 24 V |
| Operating Current Tolerance | ± 30 mA |
| Voltage | 7–30 Vdc |

E15Z01P13

| | |
|--------------------------------|---------------------|
| Voltage, CWA Mode | 10–18 Vdc |
| Alarm Current, CWA Mode | 30–170 mA @ 10–18 V |

Electrical Specifications, AISG

| | |
|--------------------------------|---------------------|
| AISG Carrier | 2.176 MHz ± 100 ppm |
| AISG Connector | 8-pin DIN Female |
| AISG Connector Standard | IEC 60130-9 |
| Default Protocol | AISG 2.0 |
| Protocol | AISG 1.1 AISG 2.0 |
| Voltage, AISG Mode | 10–30 Vdc |

Electrical Specifications

| | | |
|---|--------------|---------------|
| Sub-module | 1 2 | 1 2 |
| Branch | 1 | 2 |
| Port Designation | ANT 850 | ANT 1900 |
| License Band | CEL 850, LNA | PCS 1900, LNA |
| Return Loss - Bypass Mode, typical, dB | 18 | 18 |
| TX Band Rejection, minimum, dB | 80 | 80 |

Electrical Specifications Rx (Uplink)

| | | |
|--|----------------|------------------|
| Frequency Range, MHz | 824–849 | 1850–1910 |
| Bandwidth, MHz | 25 | 60 |
| Gain, nominal, dB | 12 | 12 |
| Gain Tolerance, dB | +1.3/-1.0 | +1.3/-1.0 |
| Noise Figure, typical, dB | 1.1 | 1.5 |
| Group Delay Variation, maximum, ns | 270 | 50 |
| Group Delay Variation Bandwidth, MHz | 5 | 5 |
| Total Group Delay, maximum, ns | 370 | 180 |
| Output IP3, minimum, dBm | 25 | 21 |
| Return Loss, minimum, dB | 18 | 18 |
| Insertion Loss - Bypass Mode, typical, dB | 2 | 3 |

Electrical Specifications Tx (Downlink)

| | | |
|-----------------------------|----------------|------------------|
| Frequency Range, MHz | 869–894 | 1930–1990 |
| Bandwidth, MHz | 25 | 60 |

E15Z01P13

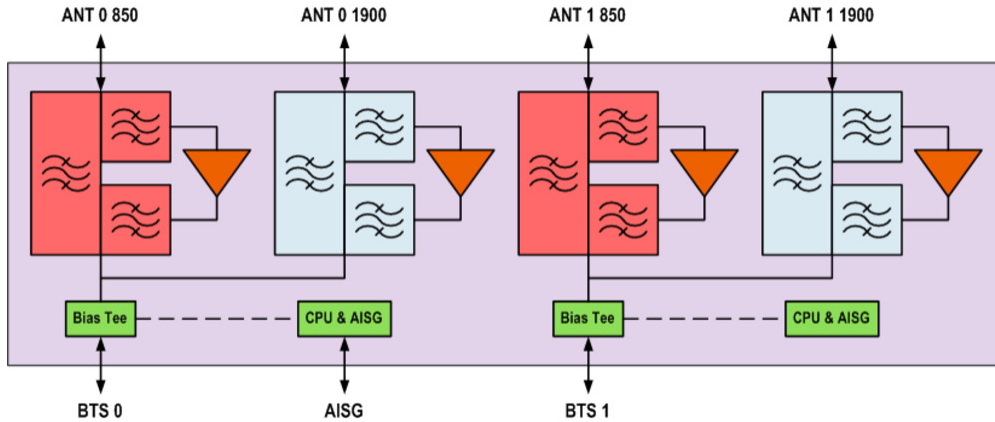
| | | |
|---|-------------------|-------------------|
| Insertion Loss, maximum, dB | 0.5 | 0.9 |
| Group Delay Variation, maximum, ns | 25 | 20 |
| Group Delay Variation Bandwidth, MHz | 5 | 5 |
| Total Group Delay, maximum, ns | 65 | 60 |
| Return Loss, minimum, dB | 18 | 18 |
| Input Power, RMS, maximum, W | 500 | 300 |
| Input Power, PEP, maximum, W | 5000 | 3000 |
| 3rd Order PIM, typical, dBc | -155 | -155 |
| 3rd Order PIM Test Method | 2 x 20 W CW tones | 2 x 20 W CW tones |

Electrical Specifications, Band Reject

| | |
|---------------------------------|----------------|
| Frequency Range, MHz | 851–856 |
| Attenuation, minimum, dB | 30 |

E15Z01P13

Block Diagram



Material Specifications

Finish Painted

Mechanical Specifications

Wind Loading @ Velocity, maximum 60.0 N @ 115 km/h (13.5 lbf @ 115 km/h)

Wind Speed, maximum 200 km/h | 124.274 mph

Environmental Specifications

Operating Temperature -40 °C to +65 °C (-40 °F to +149 °F)

Relative Humidity Up to 100%

Corrosion Test Method IEC 60068-2-11, 30 days

Ingress Protection Test Method IEC 60529:2001, IP67

Packaging and Weights

Included Mounting hardware

Weight, net 10.9 kg | 24.03 lb

Regulatory Compliance/Certifications

Agency

ISO 9001:2015

Classification

Designed, manufactured and/or distributed under this quality management system



E15Z01P13

* Footnotes

License Band, LNA License Bands that have RxUplink amplification