

4

3

2

1

1. GENERAL NOTES

- 1.1 ALL METRIC DIMENSIONS ARE IN BRACKETS
- 1.2 FEATURES CRITICAL TO QUALITY ARE INDICATED IN ROUNDED BOX (X.X)

2. DESIGN NOTES

3. MANUFACTURING/SPECIAL REQUIREMENT

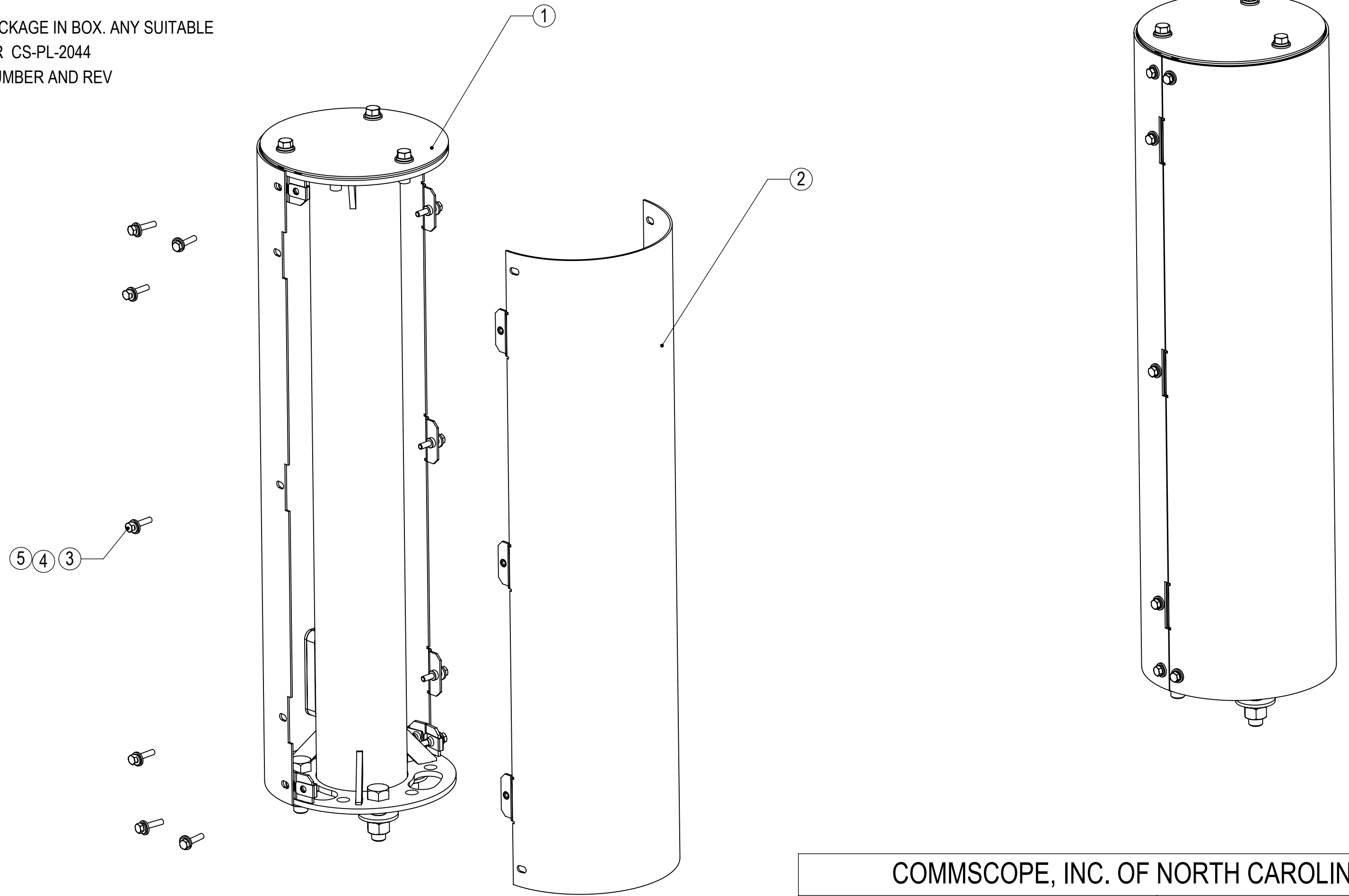
- 3.1 THE FINISHED ITEM IS A SERIES ASSEMBLY. A -XX FINISH SUFFIX REPRESENTS SPECIFIC COLOR/FINISH. REFER TO METROCELL DOCUMENT MTM1004 FOR SPECIFIC REQUIREMENTS

4. TEST

5. PACKAGING

- 5.1 WRAP THE ASSEMBLY WITH PROTECTIVE FOAM AND PACKAGE IN BOX. ANY SUITABLE SIZE BOX CAN BE USED FOR PACKAGING. PACKAGE PER CS-PL-2044
- 5.3 PACKAGING SHALL BE CLEARLY MARKED WITH PART NUMBER AND REV

REVISIONS				
REV.	ECN	DESCRIPTION	BY	DATE
A	8000035038	INITIAL RELEASE	JP1130	05/02/2019
B	8000041785	ITEM # 1 UPDATED	JP1130	7/21/2020



ITEM NO.	PART NUMBER	DESCRIPTION	QTY.
1	MTM1069-0001-XX	5G SPOOL ASSEMBLY	1
2	MTM1069-0002-XX	5G SPOOL COVER	2
3	100534-220	SCR,HCS,HEX,M6X30,SST,PASS	14
4	SWF-02	FLAT WASHER, 1/4" SS	14
5	SWL-02	1/4" SS LOCK WASHER	14

DENSITY		lbs/in <sup>3</sup>
MASS	37.30	lbs
VOLUME	184.07	in <sup>3</sup>
SURFACE AREA	2842.76	in <sup>2</sup>
HEIGHT	31	
LENGTH	8.5	
WIDTH	8.5	

<b>COMMSCOPE, INC. OF NORTH CAROLINA</b>									
TOLERANCES					SAP MATERIAL MASTER				
1 PLACE .X ± 0.125		3 PLACE .XXX ± 0.04			<b>SSC-760242536CK-XX</b>				
2 PLACE .XX ± 0.06		ANGLES ± 0.5°							
FINISH NONE					MATERIAL SEE BOM				
UNLESS OTHERWISE SPECIFIED DIMENSIONS ARE IN INCHES INTERPRET PER ANSI Y 14.5M-1994			NAME		DATE		<b>5G SPOOL &amp; COVER KIT</b>		
			CE JP1130		05/02/2019				
			RW JP1130		07/22/2020				
			RV						
			AD GR1010		07/22/2020		SCALE		<b>SSC-760242536CK-XX</b>
RE JP1130		07/22/2020		1:3					
ECN 008000041785			WORK AREA 24		MODEL			DRAWING	
<b>C</b>		VERSION		STATUS		REVISION		SHEET	
		01		RE		B		1 OF 1	

4

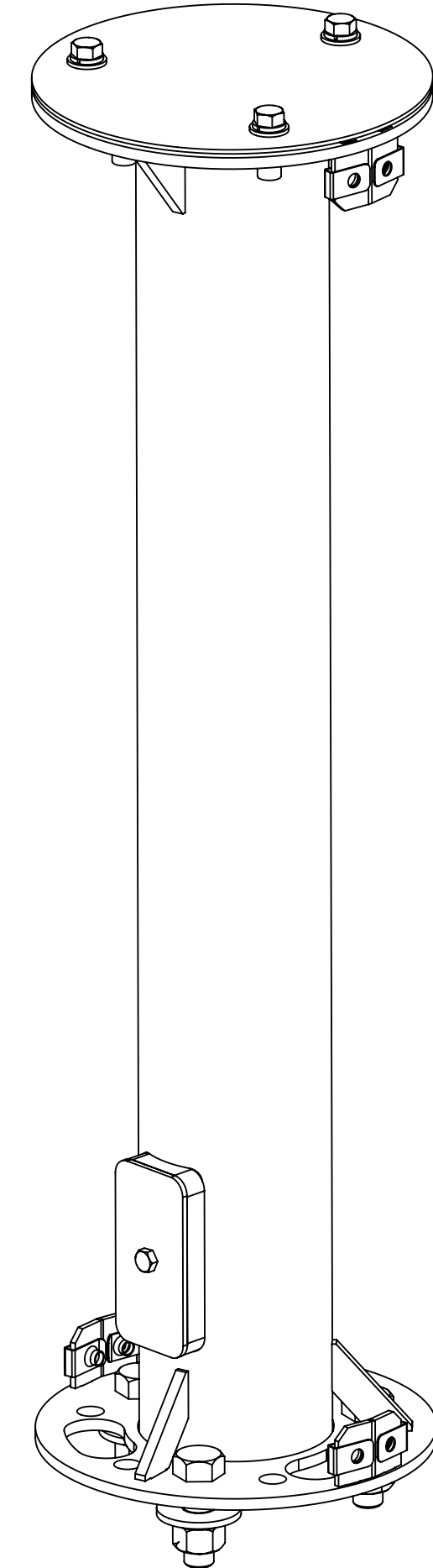
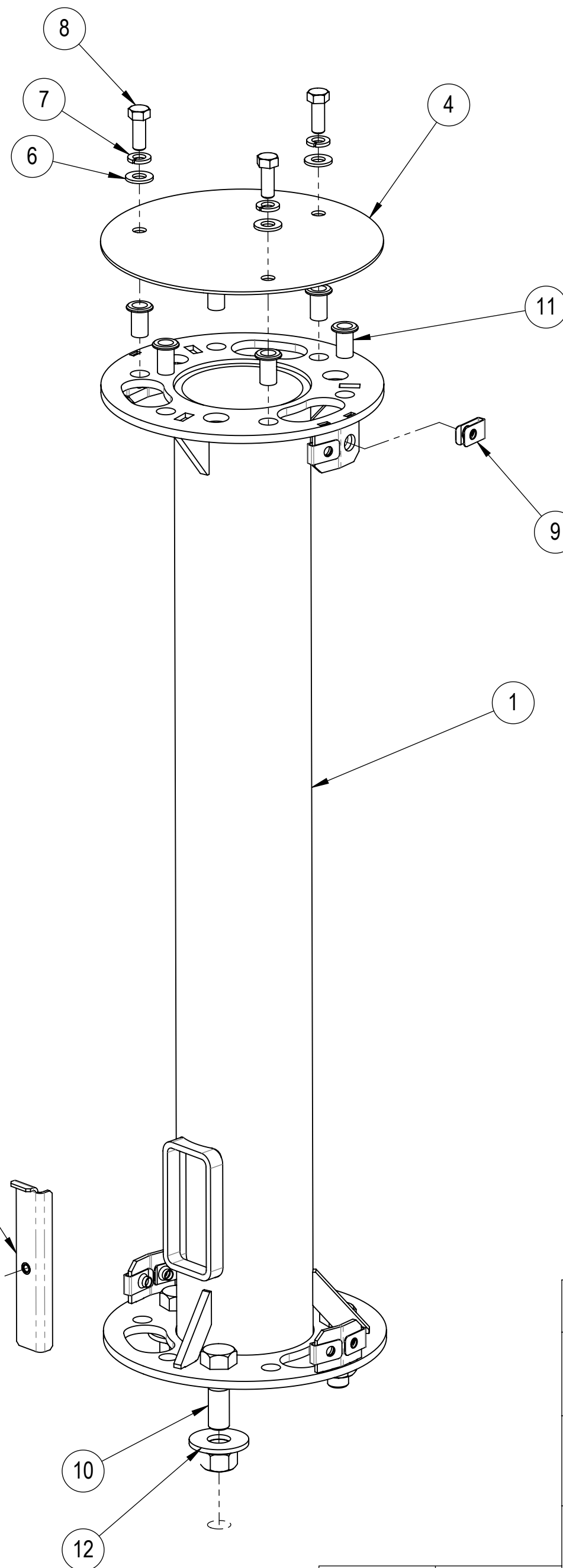
3

2

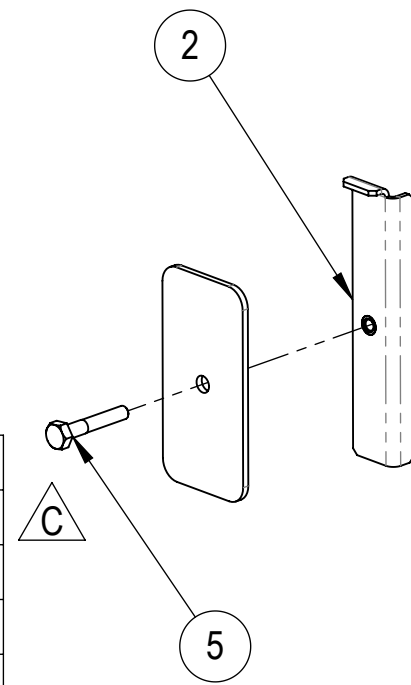
1

1. GENERAL NOTES
  - 1.1 ALL METRIC DIMENSIONS ARE IN BRACKETS
  - 1.2 FEATURES CRITICAL TO QUALITY ARE INDICATED IN ROUNDED BOX (X.X)
2. DESIGN NOTES
3. MANUFACTURING/SPECIAL REQUIREMENT
  - 3.1 THE FINISHED ITEM IS A SERIES ASSEMBLY. A -XX FINISH SUFFIX REPRESENTS SPECIFIC COLOR/FINISH. REFER TO METROCELL DOCUMENT MTM1004 FOR SPECIFIC REQUIREMENTS
4. TEST
5. PACKAGING
  - 5.1 WRAP THE ASSEMBLY WITH PROTECTIVE FOAM AND PACKAGE IN BOX. ANY SUITABLE SIZE BOX CAN BE USED FOR PACKAGING.
  - 5.2 PACKAGE IN PLASTIC BAG AND PLACE INSIDE THE SHIPPING BOX. SHOWN ASSEMBLED FOR REFERENCE ONLY.
  - 5.3 PACKAGE PER CS-PL-2044

REVISIONS				
REV.	ECN	DESCRIPTION	BY	DATE
A	8000035038	INITIAL RELEASE	JP1130	05/02/2019
B	8000038786	1. ITEM 10 WAS GB-0522A	JL1193	1/16/2020
C	8000041785	ITEM # 1 UPDATED	JP1130	7/21/2020
D	8000044081	SB-0306 REPLACED WITH SB-0310	NSUN	11/24/2020



ITEM NO.	PART NUMBER	DESCRIPTION	QTY.	NOTES
1	MTM1069-1100-XX	5G SPOOL WELDMENT	1	
2	MTM1069-1200	2 X 4 HANDHOLE MOUNTING BKT	1	
3	MTM1069-1300-XX	2 X 4 HANDHOLE COVER	1	
4	MTM1069-1400-XX	5G SPOOL TOP CAP	1	
5	MTC9406	.25" X 1.5" SS HEX BOLT	1	
6	SWF-03	3/8" SS FLAT WASHER	3	
7	SWL-03	3/8" SS LOCK WASHER	3	
8	SB-0310	3/8" X 1" SS BOLT	3	
9	460143456	CLIP NUT, M6, 316 SST	8	
10	GB-0520A	5/8" X 2" GALV BOLT KIT (A325)	3	5.2
11	RN-03L844	3/8" STAINLESS STEEL RIV-NUT	6	
12	GWF-05	5/8" GALV FLAT WASHER, 1.7OD	3	5.2



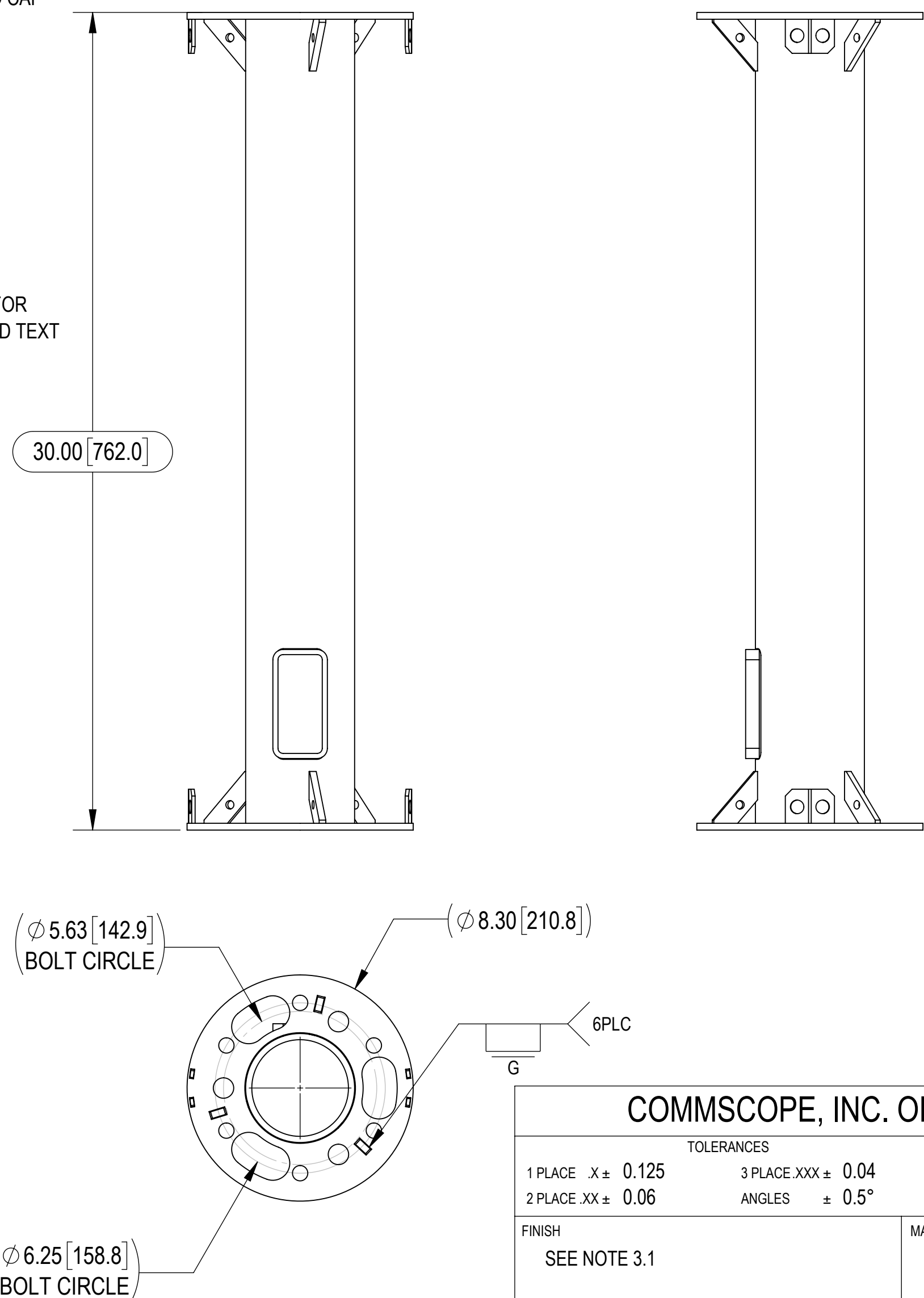
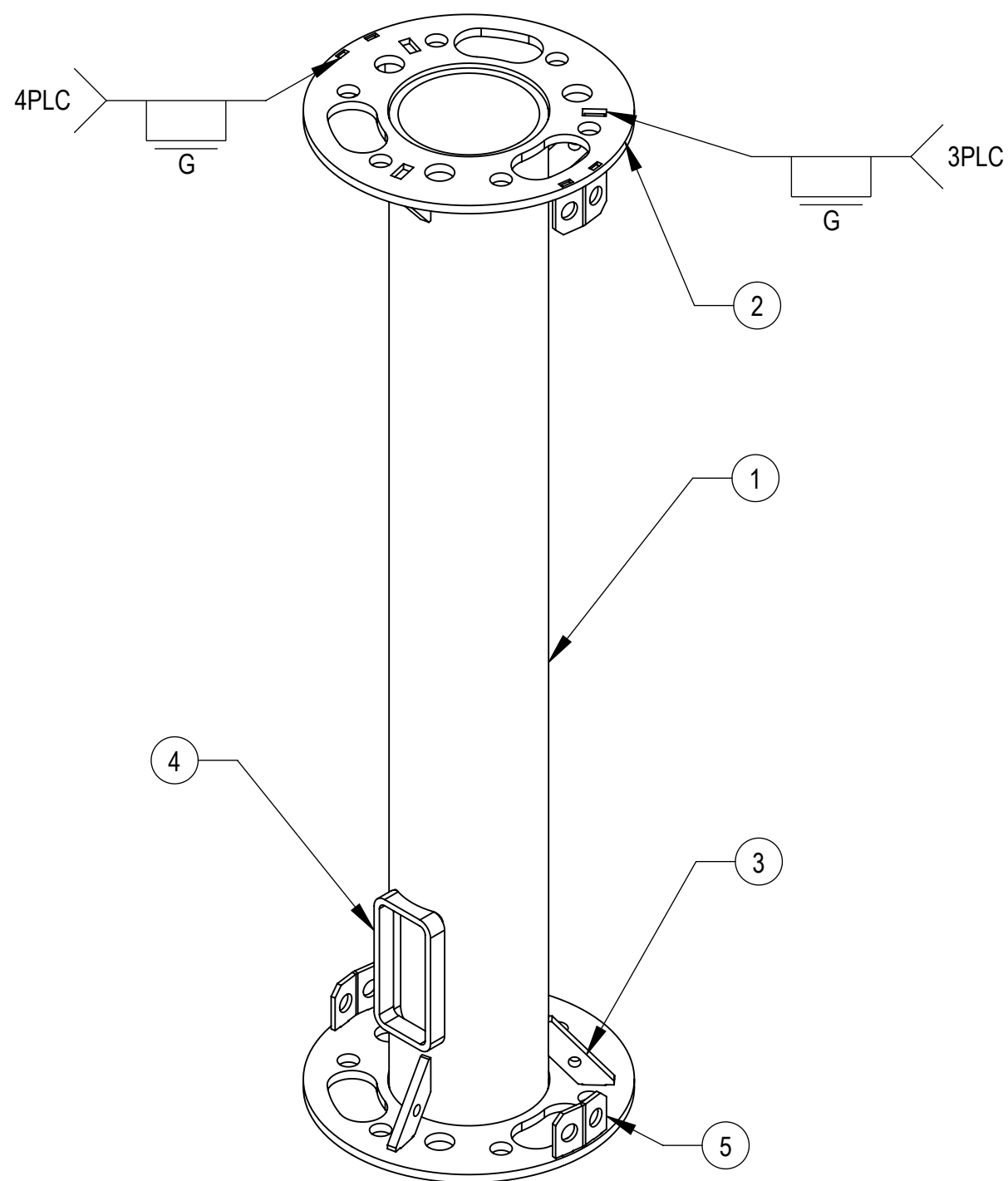
DENSITY	29.86	lbs/in <sup>3</sup>
MASS	110.18	lbs
VOLUME	1176.74	in <sup>3</sup>
SURFACE AREA		in <sup>2</sup>
HEIGHT	31"	
LENGTH	8.3"	
WIDTH	8.3"	

**COMMSCOPE, INC. OF NORTH CAROLINA**

TOLERANCES		SAP MATERIAL MASTER					
1 PLACE .X ± 0.125	3 PLACE .XXX ± 0.04	<b>MTM1069-0001-XX</b>					
2 PLACE .XX ± 0.06	ANGLES ± 0.5°						
FINISH SEE NOTE 3.1		MATERIAL SEE BOM					
UNLESS OTHERWISE SPECIFIED DIMENSIONS ARE IN INCHES INTERPRET PER ANSI Y 14.5M-1994		NAME	DATE	<b>5G SPOOL ASSEMBLY</b>			
		CE JP1130	05/02/2019				
		RW NSUN	11/24/2020				
		RV					
AD JP1130	11/30/2020	SCALE	DOCUMENT NO.	<b>MTM1069-0001-XX</b>			
RE HDAI	11/30/2020	3:10					
ECN 008000044081		SIZE	WORK AREA	MODEL	DRAWING		SHEET 1 OF 1
C	24			VERSION	STATUS	REVISION	
		03	RE	D	03	RE	D

1. GENERAL NOTES
  - 1.1 ALL METRIC DIMENSIONS ARE IN BRACKETS
  - 1.2 FEATURES CRITICAL TO QUALITY ARE INDICATED IN ROUNDED BOX (X.X)
2. DESIGN NOTES
3. MANUFACTURING/SPECIAL REQUIREMENTS
  - 3.1 FINISH:
    - 3.1A GALVANIZE PER ASTM A123.
    - 3.1B POWDER COAT EXTERIOR SURFACE PER METROCELL PRODUCT COLOR/FINISH SPECIFICATION MTM1004 NOTED AS SUFFIX, -XX. OVERSPRAY PERMISSIBLE ON INTERIOR SURFACE. DO NOT POWDER COAT END CAP SURFACES OR INTERIOR OF ASSEMBLY
  - 3.2 MASK ALL THREADED HOLES BEFORE APPLYING FINISH
  - 3.3 CLEAN HOLES AND CHASE THREADS AFTER GALVANIZING
  - 3.4 APPLY RUST PREVENTIVE COATING WHERE GALVANIZE IS REMOVED
  - 3.5 WELDING
    - 3.5A ALL WELDING SHALL CONFORM TO AWS D1.1, STEEL STRUCTURAL WELDING CODE
    - 3.5B WELDING WORKMANSHIP SHALL BE PER AWS D1.1, TABLE 8.1 (VISUAL INSPECTION)
    - 3.5C ALL WELDING SHALL BE PERFORMED BY CERTIFIED WELDERS
    - 3.5D USE E70XX ELECTRODES FOR WELDING
    - 3.5E ALL WELD SLAG, SPATTER AND SHARP SHALL BE REMOVED PRIOR TO FINISH
    - 3.5F WELDER ID TAG SHALL BE LOCATED APPROXIMATELY WHERE SHOWN FOR MANUFACTURER & WELDER TRACEABILITY. TAG SHALL HAVE MANUFACTURER ID (XXX) FOR VENDOR SUPPLIED AND WELDER ID (XXX) FOR COMMSCOPE/VENDOR WELDER. TAG CAN BE UP TO 1/8" THK. & UP TO 2" SQUARE WITH STAMPED/ENGRAVED TEXT NO LESS THAN 1/4" IN HEIGHT
4. TEST
5. PACKAGING
  - 5.1 PACKAGE PER IS-PL-3005 REQUIREMENTS

REVISIONS				
REV.	ECN	DESCRIPTION	BY	DATE
A	8000035038	INITIAL RELEASE	JP1130	05/01/2019
B	8000041785	ITEM # 2 UPDATED	JP1130	7/21/2020
C	40140599CMO	ADDED A WELDING SYMBOL; UPDATED NOTE 3.5B, DELETED NOTE 3.5G, ADDED NOTE 5.1	LL1090	12/24/2021



DENSITY	0.282	lbs/in <sup>3</sup>
MASS	27.390	lbs
VOLUME	97.161	in <sup>3</sup>
SURFACE AREA	923.084	in <sup>2</sup>
HEIGHT	30"	
LENGTH	8.3"	
WIDTH	8.3"	

**COMMSCOPE, INC. OF NORTH CAROLINA**

TOLERANCES		SAP MATERIAL MASTER					
1 PLACE .X ± 0.125	3 PLACE .XXX ± 0.04	<b>MTM1069-1100-XX</b>					
2 PLACE .XX ± 0.06	ANGLES ± 0.5°						
FINISH SEE NOTE 3.1		MATERIAL SEE SEPARATE BILLS OF MATERIAL					
UNLESS OTHERWISE SPECIFIED DIMENSIONS ARE IN INCHES INTERPRET PER ANSI Y 14.5M-1994		<b>5G SPOOL WELDMENT</b>					
CE	JP1130 05/01/2019						
RW	LL1090 12/27/2021	SCALE <b>1:4</b> DOCUMENT NO. <b>MTM1069-1100-XX</b>					
RV							
AD	CA1022 12/27/2021						
RE	LL1090 12/27/2021						
ECN 40140599CMO							
SIZE	WORK AREA INSL	MODEL					
<b>C</b>		DRAWING					
		VERSION	STATUS	REVISION	VERSION	STATUS	REVISION
		03	RE	D	02	RE	C
							SHEET
							1 OF 2