

# 860674608-009 | GRIP ANCHOR, FOR 9 HOLE CABLE LADDER

---



## Heavy Duty Cable Ladder Cross Member with Cable Attachment Points

-Product is designed to be field installed as needed on cable ladders to allow for the attachment of cables. Replaces a current rung on the cable ladder. Additional units can be installed along the cable ladder as needed to support additional cables.

-Purpose built cable ladder rung that is designed to support 1000 pounds of cable per eye or up to 1000 pounds in combination. Ideal for Hybrid cable. Includes mounting eye bolt for attachment.

Installs on the below standard cable ladders:

CL-0910-U

CL-0920-U

-Not to be used for hoisting.

-Competent person to make determination of usage on the structure.

## Product Classification

|                      |  |
|----------------------|--|
| <b>Portfolio</b>     | CommScope®                             |
| <b>Product Type</b>  | Hoisting Grip Anchor                   |
| <b>Ordering Note</b> | CommScope® standard product with terms |
| <b>Warranty</b>      | One year                               |

## General Specifications

|                             |              |
|-----------------------------|--------------|
| <b>Cable Runs, quantity</b> | 3            |
| <b>Mounting</b>             | Cable ladder |

## Material Specifications

|                      |                          |
|----------------------|--------------------------|
| <b>Material Type</b> | Hot dip galvanized steel |
|----------------------|--------------------------|

## Packaging and Weights

|                           |                 |
|---------------------------|-----------------|
| <b>Included</b>           | Attachment kits |
| <b>Packaging quantity</b> | 1               |

## Regulatory Compliance/Certifications

|               |                                   |
|---------------|-----------------------------------|
| <b>Agency</b> | <b>Classification</b>             |
| CHINA-ROHS    | Above maximum concentration value |

# 860674608-009 | GRIP ANCHOR, FOR 9 HOLE CABLE LADDER

---

ROHS Compliant/Exempted

UK-ROHS Compliant/Exempted



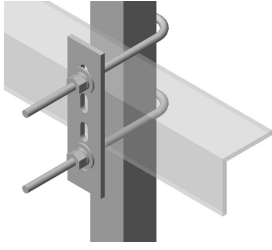
## Included Products

HK-CL-U – Universal Cable Ladder Hardware Kit for 1 in to 4-1/2 in round or angle members

## \* Footnotes

**Warranty** For more information, please consult our Product Warranty guidelines

# HK-CL-U



Universal Cable Ladder Hardware Kit for 1 in to 4-1/2 in round or angle members

## Product Classification

|                      |                                      |
|----------------------|--------------------------------------|
| <b>Portfolio</b>     | CommScope®                           |
| <b>Product Type</b>  | Ladder kit                           |
| <b>Ordering Note</b> | CommScope® standard product (Global) |

## General Specifications

|                             |                      |
|-----------------------------|----------------------|
| <b>Cable Runs, quantity</b> | 0                    |
| <b>Mounting</b>             | Round and angle legs |

## Dimensions

|                                   |                   |
|-----------------------------------|-------------------|
| <b>Height</b>                     | 203.2 mm   8 in   |
| <b>Width</b>                      | 127 mm   5 in     |
| <b>Length</b>                     | 203.2 mm   8 in   |
| <b>Mounting Diameter, maximum</b> | 114.3 mm   4.5 in |
| <b>Mounting Diameter, minimum</b> | 25.4 mm   1 in    |

## Material Specifications

|                      |                          |
|----------------------|--------------------------|
| <b>Material Type</b> | Hot dip galvanized steel |
|----------------------|--------------------------|

## Packaging and Weights

|                           |                   |
|---------------------------|-------------------|
| <b>Included</b>           | J-bolts   Plates  |
| <b>Packaging quantity</b> | 1                 |
| <b>Weight, net</b>        | 1.7 kg   3.748 lb |

## Regulatory Compliance/Certifications

| <b>Agency</b> | <b>Classification</b>  |
|---------------|--|
| CHINA-ROHS    | Above maximum concentration value  |
| ISO 9001:2015 | Designed, manufactured and/or distributed under this quality management system |

# HK-CL-U

---

ROHS Compliant/Exempted

UK-ROHS Compliant/Exempted

