

Temporary Wireless Solutions

Rapid Deployment Unit

COMMSCOPE®
RUCKUS®

Professional Services

DATA SHEET

Benefits

- Rapid, temporary deployment
- Multiple power and deployment options
- Multiple wireless, security and IoT applications
- Designed for adverse weather
- Brandable
- Professional delivery, activation and support services available
- Hosted/managed services available
- Custom configurations available

Wireless connectivity that deploys fast—and deploys just about anywhere

With CommScope, you have a powerful temporary solution that can provide reliable, remote wireless connectivity for:

- Large special events like festivals, fairs and concerts
- Disaster recovery and first responder operations
- Temporary network capacity offload
- Remote industrial sites
- Testing new technology or scouting new locations for permanent wireless infrastructure

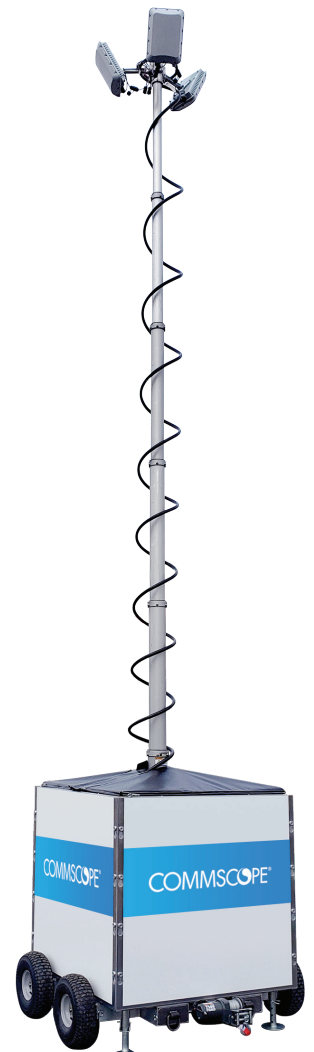
CommScope's Wireless Rapid Deployment Unit (RDU) is part of our portfolio of semi-permanent and mobile temporary solutions for mobile operators, telcos, cable operators, utilities and government agencies.

The RDU is a compact unit built on an aluminum frame with all-weld construction. It's forklift-ready and can be easily shipped (24 units per 48' flatbed) and then towed in tandem into position on site. Jacks are included to level the unit for operation. One or two workers can have it fully deployed and connecting users in less than 60 minutes.

Adaptable, flexible technology

The Wireless RDU is designed to simplify deployments and eliminate the need for different platforms to meet different requirements. It supports AC power and comes with an onboard gas generator and fuel tank to typically support up to 80 hours of uninterrupted operation. Battery backup with UPS is also included to ensure continuous operations.

User connectivity options include PoE-driven RUCKUS Wi-Fi Access Points and CBRS/small cell radios. PoE-driven IoT devices like cameras are also supported. The





RDU's extendable mast is wind rated to 80 mph and can be raised to 23' with up to four devices weighing up to 100 pounds. Connectivity to the network is supported via hybrid fiber cable, fiber or microwave backhaul.

The unit is built for ease of maintenance and repair in the field, incorporating readily-available components. Optionally, it can be customized with branded graphics promoting a service provider, event or other identification. Other configurations will be considered.

Base Rapid Deployment Unit Includes:



Signal inputs	Signal outputs
CATV system input to DOCSIS Modem	Ruckus Outdoor APs: 4x4:4 See AP specification
Ethernet fiber feed input, CAT6 or SFP	Up to 6 APs supported by POE+ connections
Wireless capability	Other PoE devices supported: CBRS, cameras, etc.
Wireless bridge	
Physical specifications	
Footprint (standard pallet size)	4' x 4'
Height for transport / fully extended (feet)	7' / 23'
Weight without ballast / with ballast (pounds)	1170 / ~1490



Professional Services

CommScope's Professional Services team is available to ship, preconfigure, customize, deploy, connect and centrally host Wi-Fi services. Options include:

- **White Glove Delivery:** Shipping, unpacking, setup, placement, removal of packing materials
- **Service Activation:** Network connection, provisioning and activation, demo and "over-the-shoulder" training
- **Onsite Support:** Onsite monitoring and maintenance for the duration of the deployment
- **Managed Services:** User onboarding, back-office system integration, 24/7 monitoring and maintenance, end user and/or operator tech support

Let CommScope help you prepare for and meet your needs for emergency and temporary wireless service. Contact your CommScope Account Manager for more information.



Ordering Information for RDU and Physical Set Up

Part number	Description
616792-001-00	Rapid Deployment Unit Base unit with Wi-Fi
616793-001-00	White Glove delivery
616794-001-00	Service activation
616795-001-00	Onsite support (per week)

Ordering Information for Managed Services

Part number	Description
476666-166-00	New operator setup—Requirements fulfillment and base platform build-out
476666-166-16	New vertical setup—RDU base unit with Wi-Fi
476666-166-17	Onboarding; per RDU—Managed NOC onboarding
476666-170-22	Per RDU—Monthly management
476666-170-48	Tier 1 support fee per call
476666-190-01	SMS messaging per message

CommScope pushes the boundaries of communications technology with game-changing ideas and ground-breaking discoveries that spark profound human achievement. We collaborate with our customers and partners to design, create and build the world's most advanced networks. It is our passion and commitment to identify the next opportunity and realize a better tomorrow. Discover more at commscope.com



commscope.com

Visit our website or contact your local CommScope representative for more information.

© 2020 CommScope, Inc. All rights reserved.

Unless otherwise noted, all trademarks identified by ® or ™ are registered trademarks or trademarks, respectively, of CommScope, Inc. This document is for planning purposes only and is not intended to modify or supplement any specifications or warranties relating to CommScope products or services. CommScope is committed to the highest standards of business integrity and environmental sustainability, with a number of CommScope's facilities across the globe certified in accordance with international standards, including ISO 9001, TL 9000, and ISO 14001. Further information regarding CommScope's commitment can be found at www.commscope.com/About-Us/Corporate-Responsibility-and-Sustainability.

PA-114312.3-EN (09/20)