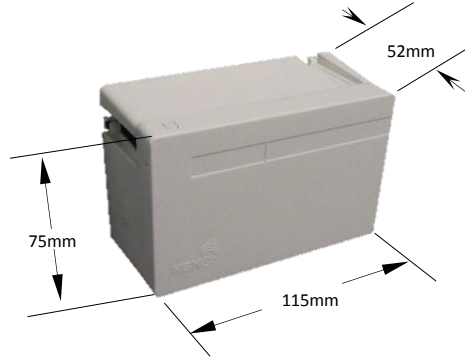


#### 1 Dimensions



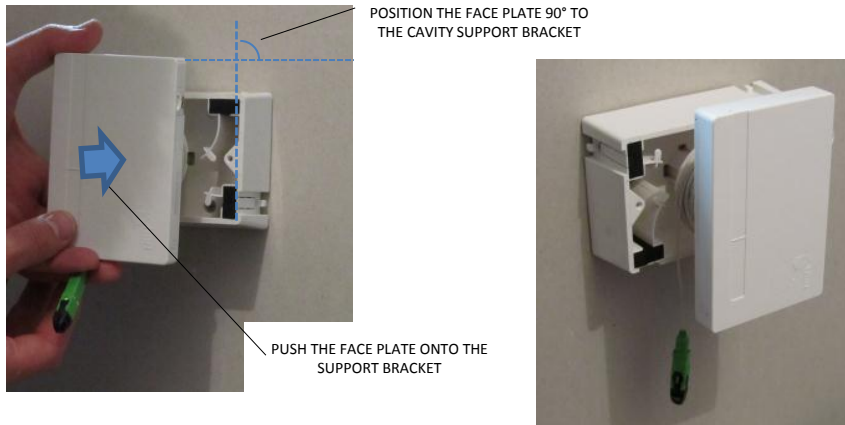
#### 2 Preparing RFP for installation onto the wall

- Within the appropriate location mount the wall mount bracket to the wall using two screws provided



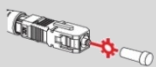
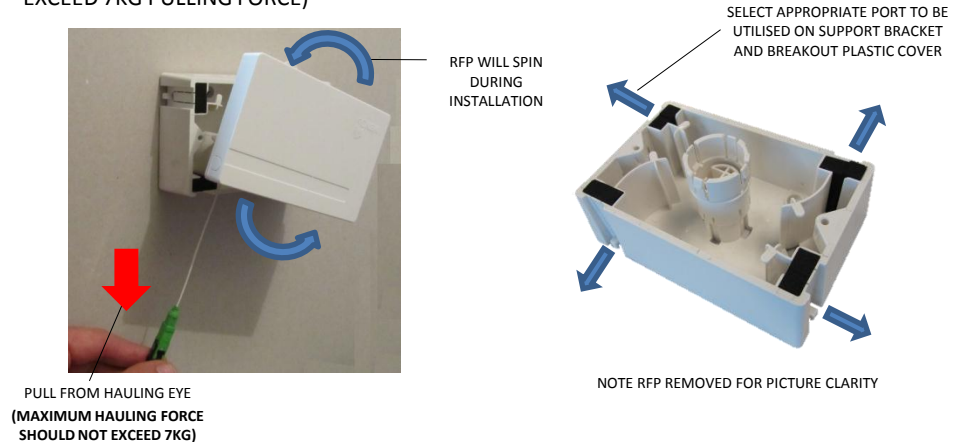
#### 3 Assemble Face Plate to support bracket

Align the face plate 90 degrees to the support bracket and push the assembly together.



#### 4 UNSPOOL CABLE AND ROUTE TO EQUIPMENT

Using the hauling eye Gently pull the cable, make sure the RFP spins freely (DO NOT EXCEED 7KG PULLING FORCE)



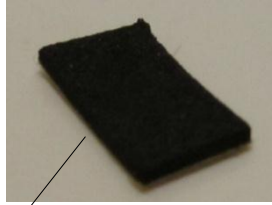
*Infrared radiation is invisible and can seriously damage the retina of the eye. Do not look into the ends of any optical fibre. Do not look directly into the optical adaptor. Exposure to invisible laser radiation may result. A protective cap or hood must be immediately placed over any radiating adaptor or optical fibre connector to avoid the potential of dangerous amounts of radiation exposure. The practice also prevents dirt particles from entering the connector and adaptor.*

5

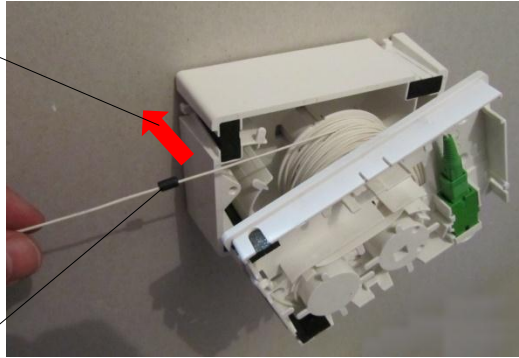
### Managing the cable within the wall box

Secure the cable to the mounting bracket

FEED CABLE INTO FOAM SLOT AND ANCHOR USING A CABLE TIE



CUT A SMALL PIECE OF ADHESIVE FOAM PROVIDED



ATTACH FOAM TO CABLE IN PREPARATION FOR ANCHORING TO FACE PLATE

ENSURE CABLE IS LOCATED AT THE TOP OF THE SPOOL



SECURE CABLE WITH CABLE TIE PROVIDED

6

### Securing the face plate

Push the face plate into the support bracket aligning the face plate with the support bracket

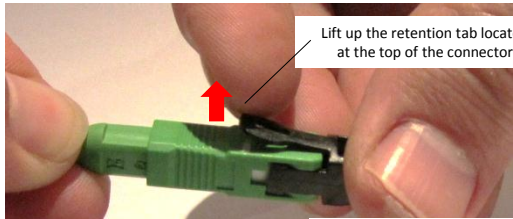


VIEW FROM INSIDE WALL CAVITY

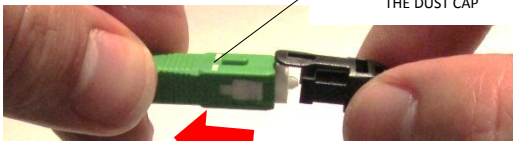
7

### Hauling eye removal

After the required cable is payed out, remove the pulling eye as shown



Lift up the retention tab located at the top of the connector

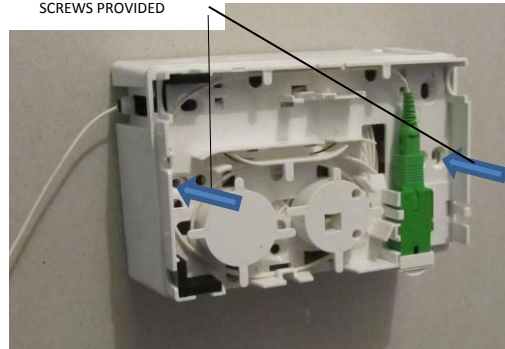


PULL THE BODY OF THE CONNECTOR BACK TO RELEASE THE DUST CAP

8

### Final Fixing and Closedown

SECURE FACE PLATE TO SUPPORT BRACKET USING 2 SCREWS PROVIDED



ASSEMBLE COVER TO COMPLETE THE INSTALLATION

