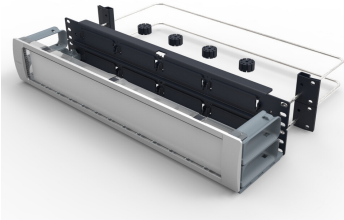


760193920 | 360MP-2U-PANEL



MP-2U Panel, accepts eight G2 data modules or 360DP panels

Product Classification

Regional Availability	Asia Australia/New Zealand EMEA Latin America North America
Portfolio	CommScope®
Product Type	Fiber patch panel

General Specifications

Application	Accepts eight InstaPATCH® 360 data modules or 360DP panels
Color	Black
Interface, front	Unloaded
Rack Units	2
Total Ports, quantity	0

Dimensions

Height	88.9 mm 3.5 in
Width	482.6 mm 19 in
Depth	133.35 mm 5.25 in

Packaging and Weights

Weight, net	2.268 kg 5 lb
--------------------	-----------------

Regulatory Compliance/Certifications

Agency	Classification
CHINA-ROHS	Below maximum concentration value
ISO 9001:2015	Designed, manufactured and/or distributed under this quality management system
REACH-SVHC	Compliant as per SVHC revision on www.commscope.com/ProductCompliance
ROHS	Compliant
UK-ROHS	Compliant

760193920 | 360MP-2U-PANEL

