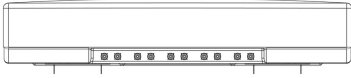


5UPX0805F



10-port multibeam antenna, 10x 698–894 MHz, 5 x 13.5° HPBW, fixed electrical tilt. Ships with two T-041-GL-E mounting kits.

General Specifications

Antenna Type	Multibeam
Band	Single band
Grounding Type	RF connector inner conductor and body grounded to reflector and mounting bracket
Performance Note	Outdoor usage
Radome Material	Polyester fiberglass pultrusion
RF Connector Interface	7-16 DIN Female
RF Connector Location	Bottom
RF Connector Quantity, low band	10
RF Connector Quantity, total	10

Dimensions

Width	1574 mm 61.969 in
Depth	282 mm 11.102 in
Length	1617 mm 63.661 in
Net Weight, without mounting kit	85 kg 187.393 lb

Electrical Specifications

Impedance	50 ohm
Operating Frequency Band	698 – 894 MHz
Polarization	±45°

Electrical Specifications

Frequency Band, MHz	698–894
Gain, dBi	20.6
Beamwidth, Horizontal, degrees	13
Beamwidth, Vertical, degrees	17.1

5UPX0805F

Beam Tilt, degrees	6
USLS (First Lobe), dB	18
Front-to-Back Ratio at 180°, dB	35
CPR at Boresight, dB	12
Isolation, Cross Polarization, dB	25
VSWR Return loss, dB	1.43 15.0
PIM, 3rd Order, 2 x 20 W, dBc	-150
Input Power per Port, maximum, watts	300

Electrical Specifications, BASTA

Frequency Band, MHz	698–894
Gain by all Beam Tilts, average, dBi	19.6
Gain by all Beam Tilts Tolerance, dB	±1.9
Beamwidth, Horizontal Tolerance, degrees	±2.4
Beamwidth, Vertical Tolerance, degrees	±3.4
USLS, beampeak to 20° above beampeak, dB	17
Front-to-Back Total Power at 180° ± 30°, dB	33
CPR at Boresight, dB	12

Mechanical Specifications

Wind Loading @ Velocity, maximum	2,700.0 N @ 160 km/h (607.0 lbf @ 160 km/h)
Wind Speed, maximum	140 km/h (87 mph)

Packaging and Weights

Width, packed	1670 mm 65.748 in
Depth, packed	440 mm 17.323 in
Length, packed	1760 mm 69.291 in
Weight, gross	169 kg 372.581 lb

5UPX0805F

Regulatory Compliance/Certifications

Agency	Classification
CHINA-ROHS	Below maximum concentration value
ISO 9001:2015	Designed, manufactured and/or distributed under this quality management system
REACH-SVHC	Compliant as per SVHC revision on www.commscope.com/ProductCompliance
ROHS	Compliant
UK-ROHS	Compliant



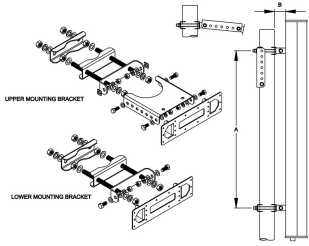
Included Products

- T-041-GL-E – Adjustable Tilt Pipe Mounting Kit for 2.0"-4.5" (60-115mm) OD round members for panel antennas. Includes 2 clamp sets.

* Footnotes

Performance Note Severe environmental conditions may degrade optimum performance

T-041-GL-E



Adjustable Tilt Pipe Mounting Kit for 2.0"-4.5" (60-115mm) OD round members for panel antennas. Includes 2 clamp sets.

Product Classification

Product Type Adjustable tilt mounting kit

General Specifications

Application Outdoor

Color Silver

Dimensions

Compatible Length, maximum 1500 mm | 59.055 in

Compatible Length, minimum 1200 mm | 47.244 in

Compatible Diameter, maximum 115 mm | 4.528 in

Compatible Diameter, minimum 60 mm | 2.362 in

Antenna-to-Pipe Distance 85 mm | 3.346 in

Bracket-to-Bracket Distance 976 mm | 38.425 in

Weight, net 5.5 kg | 12.125 lb

Material Specifications

Material Type Galvanized steel

Mechanical Specifications

Mechanical Tilt 0°-12° in steps of 2°

Packaging and Weights

Included Brackets | Hardware

Packaging quantity 1

Regulatory Compliance/Certifications

Agency	Classification
CE	Compliant with the relevant CE product directives

T-041-GL-E

CHINA-ROHS	Below maximum concentration value
ISO 9001:2015	Designed, manufactured and/or distributed under this quality management system
REACH-SVHC	Compliant as per SVHC revision on www.commscope.com/ProductCompliance
ROHS	Compliant
UK-ROHS	Compliant

