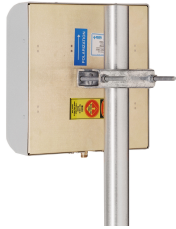


# DB992HG28N-B



1-port small cell antenna, 1710–2490 MHz, 30° HPBW, fixed electrical tilt

- High gain array ideal for point-to-point and repeater applications
- Unique mounts allow vertical or horizontal polarization

## General Specifications

|   |  |
|---|--|
| <b>Antenna Type</b>                     | Small Cell   |
| <b>Band</b>                             | Single band  |
| <b>Color</b>                            | Light Gray (RAL 7035)  |
| <b>Grounding Type</b>                   | RF connector inner conductor and body grounded to reflector and mounting bracket |
| <b>Performance Note</b>                 | Outdoor usage  |
| <b>Radome Material</b>                  | ABS, UV resistant  |
| <b>Radiator Material</b>                | Aluminum   |
| <b>RF Connector Interface</b>           | N Female   |
| <b>RF Connector Location</b>            | Bottom   |
| <b>RF Connector Quantity, high band</b> | 1  |
| <b>RF Connector Quantity, total</b>     | 1  |

## Dimensions

|   |                    |
|---|--------------------|
| <b>Width</b>                            | 311 mm   12.244 in |
| <b>Depth</b>                            | 124 mm   4.882 in  |
| <b>Length</b>                           | 311 mm   12.244 in |
| <b>Net Weight, without mounting kit</b> | 1.3 kg   2.866 lb  |

## Electrical Specifications

|                                 |                                  |
|---------------------------------|----------------------------------|
| <b>Impedance</b>                | 50 ohm                           |
| <b>Operating Frequency Band</b> | 1710 – 2490 MHz                  |
| <b>Polarization</b>             | Horizontal   Vertical   Vertical |

## Electrical Specifications

| <b>Frequency Band, MHz</b> | <b>1710–2170</b> | <b>2170–2490</b> |
|----------------------------|------------------|------------------|
| <b>Gain, dBi</b>           | 16               | 16               |

# DB992HG28N-B

|   |            |            |
|---|------------|------------|
| <b>Beamwidth, Horizontal, degrees</b>       | 28         | 28         |
| <b>Beamwidth, Vertical, degrees</b>         | 30         | 30         |
| <b>Beam Tilt, degrees</b>                   | 0          | 0          |
| <b>USLS, typical, dB</b>                    | 15         | 15         |
| <b>Front-to-Back Ratio at 180°, dB</b>      | 30         | 30         |
| <b>VSWR   Return loss, dB</b>               | 1.4   15.6 | 1.9   10.1 |
| <b>PIM, 3rd Order, 2 x 10 W, dBc</b>        | -150       | -150       |
| <b>Input Power per Port, maximum, watts</b> | 100        | 100        |

## Mechanical Specifications

|   |  |
|---|--|
| <b>Wind Loading @ Velocity, maximum</b> | 156.0 N @ 150 km/h (35.1 lbf @ 150 km/h) |
| <b>Wind Speed, maximum</b>              | 201 km/h (125 mph)                       |

## Regulatory Compliance/Certifications

| <b>Agency</b> | <b>Classification</b>  |
|---------------|--|
| CE            | Compliant with the relevant CE product directives  |
| CHINA-ROHS    | Below maximum concentration value  |
| ISO 9001:2015 | Designed, manufactured and/or distributed under this quality management system   |
| REACH-SVHC    | Compliant as per SVHC revision on <a href="http://www.commscope.com/ProductCompliance">www.commscope.com/ProductCompliance</a> |
| ROHS          | Compliant  |
| UK-ROHS       | Compliant  |



## Included Products

|       |   |   |
|-------|---|---|
| DB390 | - | Pipe Mounting Kit for 2.4 - 4.5 in (60 - 115 mm) OD round members. Use for narrow panel antennas. Includes two pipe mounts. |
|-------|---|---|

## \* Footnotes

|                         |   |
|-------------------------|---|
| <b>Performance Note</b> | Severe environmental conditions may degrade optimum performance |
|-------------------------|---|

# DB390



Pipe Mounting Kit for 2.4 - 4.5 in (60 - 115 mm) OD round members. Use for narrow panel antennas. Includes two pipe mounts.

## Product Classification

**Product Type** Pipe mount kit

## General Specifications

**Application** Outdoor

**Color** Silver

## Dimensions

**Compatible Diameter, maximum** 114.3 mm | 4.5 in

**Compatible Diameter, minimum** 61 mm | 2.402 in

**Weight, net** 2 kg | 4.409 lb

## Material Specifications

**Material Type** Galvanized steel

## Packaging and Weights

**Included** Brackets | Hardware

**Packaging quantity** 1

**Weight, gross** 2.1 kg | 4.63 lb

## Regulatory Compliance/Certifications

| Agency        | Classification   |
|---------------|--|
| CHINA-ROHS    | Below maximum concentration value  |
| ISO 9001:2015 | Designed, manufactured and/or distributed under this quality management system   |
| REACH-SVHC    | Compliant as per SVHC revision on <a href="http://www.commscope.com/ProductCompliance">www.commscope.com/ProductCompliance</a> |
| ROHS          | Compliant  |
| UK-ROHS       | Compliant  |

