

NNH4-65B-R6



12-port sector antenna, 4x 698–896 and 8x 1695–2360 MHz, 65° HPBW, 6x RET.

- Features broadband Low Band (698-896 MHz) and High Band (1695-2360 MHz) arrays for 4T4R (4X MIMO) capability for Band 14, AWS, PCS and WCS applications
- Independent tilt for all arrays
- Array configuration provides capability for 4T4R (4x MIMO) on Low band and Dual 4T4R (4x MIMO) on High band
- Optimized SPR performance across all operating bands
- Excellent wind loading characteristics
- The antenna is supplied with mounting kits that provide 0 degree of mechanical downtilt; optional downtilt mounting kits are available

General Specifications

Antenna Type	Sector
Band	Multiband
Grounding Type	RF connector inner conductor and body grounded to reflector and mounting bracket
Performance Note	Outdoor usage Wind loading figures are validated by wind tunnel measurements described in white paper WP-112534-EN
Radome Material	Fiberglass, UV resistant
Radiator Material	Low loss circuit board
Reflector Material	Aluminum
RF Connector Interface	4.3-10 Female
RF Connector Location	Bottom
RF Connector Quantity, high band	8
RF Connector Quantity, low band	4
RF Connector Quantity, total	12

Remote Electrical Tilt (RET) Information

RET Hardware	CommRET v2
RET Interface	8-pin DIN Female 8-pin DIN Male
RET Interface, quantity	1 female 1 male
Input Voltage	10–30 Vdc
Internal RET	High band (4) Low band (2)

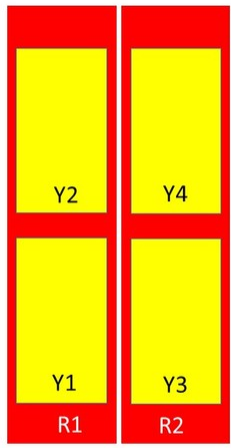
NNH4-65B-R6

Power Consumption, idle state, maximum	1 W
Power Consumption, normal conditions, maximum	8 W
Protocol	3GPP/AISG 2.0 (Multi-RET)

Dimensions

Width	498 mm 19.606 in
Depth	197 mm 7.756 in
Length	1828 mm 71.969 in
Net Weight, without mounting kit	37.7 kg 83.114 lb

Array Layout



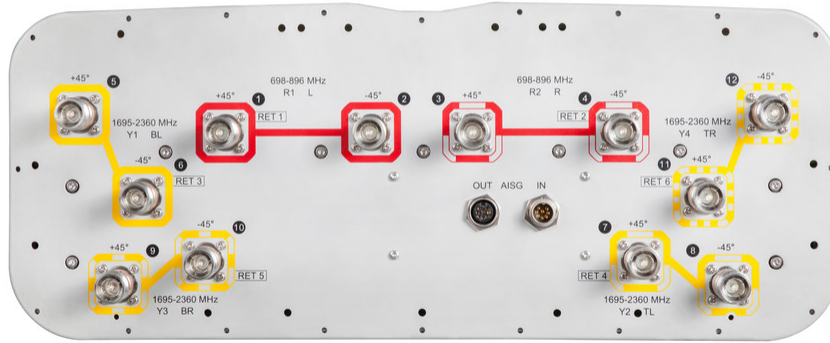
Array	Freq (MHz)	Conns	RET (SRET)	AISG RET UID
R1	698-896	1-2	1	CPxxxxxxxxxxxxxxxxmm.1
R2	698-896	3-4	2	CPxxxxxxxxxxxxxxxxmm.2
Y1	1695-2360	5-6	3	CPxxxxxxxxxxxxxxxxmm.3
Y2	1695-2360	7-8	4	CPxxxxxxxxxxxxxxxxmm.4
Y3	1695-2360	9-10	5	CPxxxxxxxxxxxxxxxxmm.5
Y4	1695-2360	11-12	6	CPxxxxxxxxxxxxxxxxmm.6

Left Bottom Right

(Sizes of colored boxes are not true depictions of array sizes)

Port Configuration

NNH4-65B-R6



Electrical Specifications

Impedance	50 ohm
Operating Frequency Band	1695 – 2360 MHz 698 – 896 MHz
Polarization	±45°
Total Input Power, maximum	900 W @ 50 °C

Electrical Specifications

Frequency Band, MHz	698–806	806–896	1695–1880	1850–1990	1920–2180	2300–2360
Gain, dBi	14.4	15	15.7	16.3	16.5	16.9
Beamwidth, Horizontal, degrees	69	65	58	60	60	58
Beamwidth, Vertical, degrees	12	10.5	11.2	10.4	9.8	8.8
Beam Tilt, degrees	2–14	2–14	2–14	2–14	2–14	2–14
USLS (First Lobe), dB	16	18	18	19	19	17
Front-to-Back Ratio at 180°, dB	28	32	33	38	35	37
Isolation, Cross Polarization, dB	25	25	25	25	25	25
Isolation, Inter-band, dB	25	25	25	25	25	25
VSWR Return loss, dB	1.5 14.0	1.5 14.0	1.5 14.0	1.5 14.0	1.5 14.0	1.5 14.0

NNH4-65B-R6

PIM, 3rd Order, 2 x 20 W, dBc	-150	-150	-150	-150	-150	-150
Input Power per Port at 50°C, maximum, watts	300	300	250	250	250	200

Electrical Specifications, BASTA

Frequency Band, MHz	698–806	806–896	1695–1880	1850–1990	1920–2180	2300–2360
Gain by all Beam Tilts, average, dBi	14	14.7	15.2	16	16.1	16.5
Gain by all Beam Tilts Tolerance, dB	±0.5	±0.6	±0.8	±0.5	±0.4	±0.5
Gain by Beam Tilt, average, dBi	2° 14.1 8° 14.1 14° 13.7	2° 14.8 8° 14.8 14° 14.3	2° 15.2 8° 15.2 14° 15.0	2° 16.0 8° 16.0 14° 15.9	2° 16.1 8° 16.2 14° 16.0	2° 16.5 8° 16.4 14° 16.4
Beamwidth, Horizontal Tolerance, degrees	±3.7	±4.0	±5.7	±1.8	±2.8	±6.7
Beamwidth, Vertical Tolerance, degrees	±0.9	±0.9	±0.8	±0.5	±0.6	±0.4
USLS, beampeak to 20° above beampeak, dB	16	16	18	19	17	16
Front-to-Back Total Power at 180° ± 30°, dB	21	21	28	32	28	28
CPR at Boresight, dB	23	24	15	21	21	17
CPR at Sector, dB	10	5	9	8	7	9

Mechanical Specifications

Effective Projective Area (EPA), frontal	0.64 m ² 6.889 ft ²
Effective Projective Area (EPA), lateral	0.22 m ² 2.368 ft ²
Mechanical Tilt Range	0°–17°
Wind Loading @ Velocity, frontal	685.0 N @ 150 km/h (154.0 lbf @ 150 km/h)
Wind Loading @ Velocity, lateral	232.0 N @ 150 km/h (52.2 lbf @ 150 km/h)
Wind Loading @ Velocity, maximum	889.0 N @ 150 km/h (199.9 lbf @ 150 km/h)
Wind Loading @ Velocity, rear	564.0 N @ 150 km/h (126.8 lbf @ 150 km/h)
Wind Speed, maximum	241 km/h (150 mph)

Packaging and Weights

Width, packed	608 mm 23.937 in
Depth, packed	352 mm 13.858 in
Length, packed	2010 mm 79.134 in

NNH4-65B-R6

Weight, gross

48.3 kg | 106.483 lb

Regulatory Compliance/Certifications

Agency

Classification

CHINA-ROHS

Above maximum concentration value

ISO 9001:2015

Designed, manufactured and/or distributed under this quality management system

ROHS

Compliant/Exempted

UK-ROHS

Compliant/Exempted



Included Products

BSAMNT-2F

- Mounting bracket for cylindrical pipe installations (60-115mm pipe diameter) for fix mechanical tilt applications.

* Footnotes

Performance Note

Severe environmental conditions may degrade optimum performance