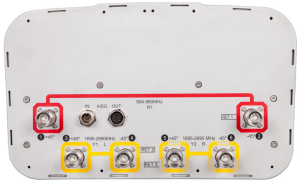


# RVV-65A-R3



6-port sector antenna, 2x 694–960 and 4x 1695–2690 MHz, 65° HPBW, 3x RET

- All Internal RET actuators are connected in "Cascaded SRET" configuration
- Uses the 4.3-10 connector which is 40 percent smaller than the 7-16 DIN connector
- Narrow vertical beamwidth over 700MHz

## General Specifications

<b>Antenna Type</b>	Sector
<b>Band</b>	Multiband
<b>Color</b>	Light Gray (RAL 7035)
<b>Grounding Type</b>	RF connector inner conductor and body grounded to reflector and mounting bracket
<b>Performance Note</b>	Outdoor usage
<b>Radome Material</b>	Fiberglass, UV resistant
<b>Reflector Material</b>	Aluminum
<b>RF Connector Interface</b>	4.3-10 Female
<b>RF Connector Location</b>	Bottom
<b>RF Connector Quantity, mid band</b>	4
<b>RF Connector Quantity, low band</b>	2
<b>RF Connector Quantity, total</b>	6

## Remote Electrical Tilt (RET) Information

<b>RET Interface</b>	8-pin DIN Female   8-pin DIN Male
<b>RET Interface, quantity</b>	1 female   1 male
<b>Input Voltage</b>	10–30 Vdc
<b>Internal RET</b>	Low band (1)   Mid band (2)
<b>Power Consumption, active state, maximum</b>	13 W
<b>Power Consumption, idle state, maximum</b>	2 W
<b>Protocol</b>	3GPP/AISG 2.0 (Single RET)

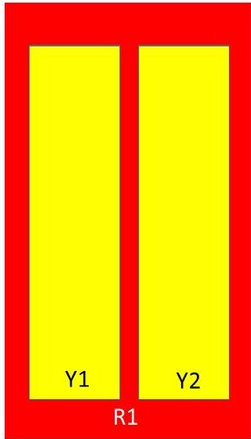
## Dimensions

<b>Width</b>	350 mm   13.78 in
--------------	-------------------

# RVV-65A-R3

<b>Depth</b>	208 mm   8.189 in
<b>Length</b>	1400 mm   55.118 in
<b>Net Weight, antenna only</b>	19.3 kg   42.549 lb

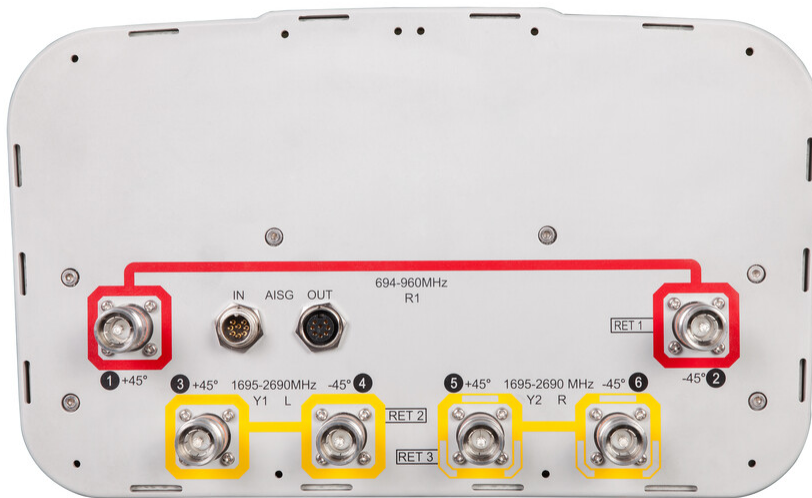
## Array Layout



Array	Freq (MHz)	Conns	RET (SRET)	AISG RET UID
R1	694-960	1-2	1	ANxxxxxxxxxxxxxxxxx1
Y1	1695-2690	3-4	2	ANxxxxxxxxxxxxxxxxx2
Y2	1695-2690	5-6	3	ANxxxxxxxxxxxxxxxxx3

Left Bottom Right (Sizes of colored boxes are not true depictions of array sizes)

## Port Configuration



# RVV-65A-R3

## Electrical Specifications

<b>Impedance</b>	50 ohm
<b>Operating Frequency Band</b>	1695 – 2690 MHz   694 – 960 MHz
<b>Polarization</b>	±45°
<b>Total Input Power, maximum</b>	800 W @ 50 °C

## Electrical Specifications

	<b>R1</b>	<b>R1</b>	<b>R1</b>	<b>Y1,Y2</b>	<b>Y1,Y2</b>	<b>Y1,Y2</b>	<b>Y1,Y2</b>
<b>Frequency Band, MHz</b>	<b>698–806</b>	<b>790–896</b>	<b>890–960</b>	<b>1695–1990</b>	<b>1920–2300</b>	<b>2300–2500</b>	<b>2490–2690</b>
<b>RF Port</b>	1-2	1-2	1-2	3-6	3-6	3-6	3-6
<b>Gain at Mid Tilt, dBi</b>	14.1	14.6	14.7	17.3	17.8	18.2	18
<b>Beamwidth, Horizontal, degrees</b>	68	65	63	60	61	60	59
<b>Beamwidth, Vertical, degrees</b>	14.8	13.5	12.6	7.1	6.4	5.7	5.5
<b>Beam Tilt, degrees</b>	3–16	3–16	3–16	2–12	2–12	2–12	2–12
<b>USLS (First Lobe), dB</b>	13	14	14	16	16	16	15
<b>Front-to-Back Ratio at 180°, dB</b>	29	30	31	34	37	36	29
<b>Isolation, Cross Polarization, dB</b>	28	28	28	28	28	28	28
<b>Isolation, Inter-band, dB</b>	30	30	30	28	28	28	28
<b>VSWR   Return loss, dB</b>	1.5 14.0	1.5 14.0	1.5 14.0	1.5 14.0	1.5 14.0	1.5 14.0	1.5 14.0
<b>PIM, 3rd Order, 2 x 20 W, dBc</b>	-153	-153	-153	-153	-153	-153	-153
<b>Input Power per Port at 50°C, maximum, watts</b>	300	300	300	250	250	200	200

## Electrical Specifications, BASTA

<b>Frequency Band, MHz</b>	<b>698–806</b>	<b>790–896</b>	<b>890–960</b>	<b>1695–1990</b>	<b>1920–2300</b>	<b>2300–2500</b>	<b>2490–2690</b>
<b>Gain by all Beam Tilts, average, dBi</b>	14	14.5	14.6	17.2	17.7	18.1	17.9
<b>Gain by all Beam Tilts Tolerance, dB</b>	±0.3	±0.3	±0.3	±0.7	±0.4	±0.3	±0.4
<b>Beamwidth, Horizontal Tolerance, degrees</b>	±2	±2	±1	±4	±4	±5	±3
<b>Beamwidth, Vertical Tolerance, degrees</b>	±0.9	±0.9	±0.8	±0.6	±0.5	±0.2	±0.3
<b>USLS, beampeak to 20° above</b>	15	15	14	14	15	15	13

# RVV-65A-R3

## beampeak, dB

<b>Front-to-Back Total Power at 180° ± 30°, dB</b>	24	23	23	27	26	26	24
<b>CPR at Boresight, dB</b>	16	16	17	20	20	20	15
<b>CPR at Sector, dB</b>	11	10	9	11	10	6	3

## Mechanical Specifications

<b>Wind Loading @ Velocity, frontal</b>	231.0 N @ 150 km/h (51.9 lbf @ 150 km/h)
<b>Wind Loading @ Velocity, lateral</b>	222.0 N @ 150 km/h (49.9 lbf @ 150 km/h)
<b>Wind Loading @ Velocity, maximum</b>	520.0 N @ 150 km/h (116.9 lbf @ 150 km/h)
<b>Wind Loading @ Velocity, rear</b>	244.0 N @ 150 km/h (54.9 lbf @ 150 km/h)
<b>Wind Speed, maximum</b>	241 km/h (150 mph)

## Packaging and Weights

<b>Width, packed</b>	447 mm   17.598 in
<b>Depth, packed</b>	354 mm   13.937 in
<b>Length, packed</b>	1544 mm   60.787 in
<b>Weight, gross</b>	31.7 kg   69.886 lb

## Regulatory Compliance/Certifications

<b>Agency</b>	<b>Classification</b>
CHINA-ROHS	Above maximum concentration value
ISO 9001:2015	Designed, manufactured and/or distributed under this quality management system
ROHS	Compliant/Exempted
UK-ROHS	Compliant/Exempted



## Included Products

BSAMNT-3	–	Wide Profile Antenna Downtilt Mounting Kit for 2.4 - 4.5 in (60 - 115 mm) OD round members. Kit contains one scissor top bracket set and one bottom bracket set.
----------	---	--

## \* Footnotes

<b>Performance Note</b>	Severe environmental conditions may degrade optimum performance
-------------------------	---

# BSAMNT-3



Wide Profile Antenna Downtilt Mounting Kit for 2.4 - 4.5 in (60 - 115 mm) OD round members. Kit contains one scissor top bracket set and one bottom bracket set.

## Product Classification

**Product Type** Downtilt mounting kit

## General Specifications

**Application** Outdoor

**Color** Silver

## Dimensions

**Compatible Diameter, maximum** 115 mm | 4.528 in

**Compatible Diameter, minimum** 60 mm | 2.362 in

**Weight, net** 6.2 kg | 13.669 lb

## Material Specifications

**Material Type** Galvanized steel

## Packaging and Weights

**Included** Brackets | Hardware

**Packaging quantity** 1

**Weight, gross** 6.4 kg | 14.11 lb

## Regulatory Compliance/Certifications

Agency	Classification
CE	Compliant with the relevant CE product directives
CHINA-ROHS	Below maximum concentration value
ISO 9001:2015	Designed, manufactured and/or distributed under this quality management system
REACH-SVHC	Compliant as per SVHC revision on <a href="http://www.commscope.com/ProductCompliance">www.commscope.com/ProductCompliance</a>
ROHS	Compliant
UK-ROHS	Compliant

# BSAMNT-3

---

