

# 5NPX1006F-V2



10-port multibeam antenna, 10x 1710–2180 MHz, 5x 10-14° HPBW, fixed electrical tilt

## General Specifications

<b>Antenna Type</b>	Multibeam
<b>Band</b>	Single band
<b>Color</b>	Light Gray (RAL 7035)
<b>Grounding Type</b>	RF connector inner conductor and body grounded to reflector and mounting bracket
<b>Performance Note</b>	Outdoor usage
<b>Radome Material</b>	ASA, UV stabilized
<b>Radiator Material</b>	Brass   Low loss circuit board
<b>Reflector Material</b>	Aluminum
<b>RF Connector Interface</b>	4.3-10 Female
<b>RF Connector Location</b>	Bottom
<b>RF Connector Quantity, high band</b>	10
<b>RF Connector Quantity, total</b>	10

## Dimensions

<b>Width</b>	864 mm   34.016 in
<b>Depth</b>	202 mm   7.953 in
<b>Length</b>	889 mm   35 in
<b>Net Weight, without mounting kit</b>	30 kg   66.139 lb

## Electrical Specifications

<b>Impedance</b>	50 ohm
<b>Operating Frequency Band</b>	1710 – 2180 MHz
<b>Polarization</b>	±45°

## Electrical Specifications

Frequency Band, MHz	1710–1920	1920–2180
---------------------	-----------	-----------

# 5NPX1006F-V2

Gain, dBi	21.7	22.3
Beamwidth, Horizontal, degrees	13	12
Beamwidth, Vertical, degrees	11.9	10.9
Beam Tilt, degrees	6	6
USLS (First Lobe), dB	14	16
Front-to-Back Ratio at 180°, dB	32	34
Isolation, Same Beam, dB	25	25
VSWR   Return loss, dB	1.43   15.0	1.43   15.0
PIM, 3rd Order, 2 x 20 W, dBc	-150	-150
Input Power per Port, maximum, watts	300	300

## Electrical Specifications, BASTA

Frequency Band, MHz	1710–1920	1920–2180
Gain by all Beam Tilts, average, dBi	20.7	21.3
Gain by all Beam Tilts Tolerance, dB	±2	±1.7
Beamwidth, Horizontal Tolerance, degrees	±2.1	±1.7
Beamwidth, Vertical Tolerance, degrees	±0.7	±0.7
USLS, beampeak to 20° above beampeak, dB	17	18
Front-to-Back Total Power at 180° ± 30°, dB	30	32
CPR at Boresight, dB	9	10

## Mechanical Specifications

Wind Loading @ Velocity, frontal	931.0 N @ 150 km/h (209.3 lbf @ 150 km/h)
Wind Loading @ Velocity, lateral	113.0 N @ 150 km/h (25.4 lbf @ 150 km/h)
Wind Loading @ Velocity, rear	931.0 N @ 150 km/h (209.3 lbf @ 150 km/h)
Wind Speed, maximum	250 km/h (155 mph)

## Packaging and Weights

Width, packed	977 mm   38.465 in
Depth, packed	349 mm   13.74 in
Length, packed	1038 mm   40.866 in
Weight, gross	47 kg   103.617 lb

## Regulatory Compliance/Certifications

Agency	Classification
CHINA-ROHS	Below maximum concentration value

# 5NPX1006F-V2

---

ISO 9001:2015	Designed, manufactured and/or distributed under this quality management system
REACH-SVHC	Compliant as per SVHC revision on <a href="http://www.commscope.com/ProductCompliance">www.commscope.com/ProductCompliance</a>
ROHS	Compliant
UK-ROHS	Compliant



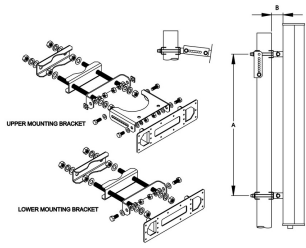
## Included Products

T-045-GL-E	-	Adjustable Tilt Pipe Mounting Kit for 2.0"-4.5" (60-115mm) OD round members for panel antennas. Includes 2 clamp sets.
------------	---	--

## \* Footnotes

<b>Performance Note</b>	Severe environmental conditions may degrade optimum performance
-------------------------	---

# T-045-GL-E



Adjustable Tilt Pipe Mounting Kit for 2.0"-4.5" (60-115mm) OD round members for panel antennas. Includes 2 clamp sets.

## Product Classification

**Product Type** Adjustable tilt mounting kit

## General Specifications

**Application** Outdoor

**Color** Silver

## Dimensions

**Compatible Length, maximum** 1200 mm | 47.244 in

**Compatible Length, minimum** 850 mm | 33.465 in

**Compatible Diameter, maximum** 115 mm | 4.528 in

**Compatible Diameter, minimum** 60 mm | 2.362 in

**Antenna-to-Pipe Distance** 85 mm | 3.346 in

**Bracket-to-Bracket Distance** 761 mm | 29.961 in

**Weight, net** 6 kg | 13.228 lb

## Material Specifications

**Material Type** Galvanized steel

## Mechanical Specifications

**Mechanical Tilt** 0°-10°

## Packaging and Weights

**Included** Brackets | Hardware

**Packaging quantity** 1

## Regulatory Compliance/Certifications

Agency	Classification
CHINA-ROHS	Below maximum concentration value

# T-045-GL-E

---

ISO 9001:2015	Designed, manufactured and/or distributed under this quality management system
REACH-SVHC	Compliant as per SVHC revision on <a href="http://www.commscope.com/ProductCompliance">www.commscope.com/ProductCompliance</a>
ROHS	Compliant
UK-ROHS	Compliant

