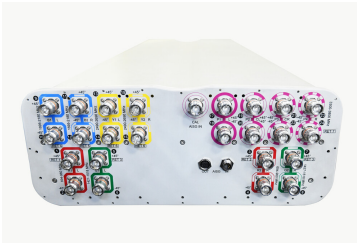


# RRYYHHTTS4-65A-R7



24-port sector antenna, 4x 694–960, 4x 1427–1518, 4x 1695–2180, 4x 2490–2690 65° HPBW and 8x 3300–3800 MHz, 7x RET

- Integrated with a calibration board
- Optimized for Software Defined Split 6 Sector applications
- 2 columns for 694-960 MHz and 2 columns for 1427-1518 / 1695-2180 / 2490-2690 MHz and 4 columns for 3300-3800 MHz
- Seven internal RETs control the antenna arrays

## General Specifications

<b>Antenna Type</b>	Sector
<b>Band</b>	Multiband
<b>Calibration Connector Interface</b>	4.3-10 Female
<b>Calibration Connector Quantity</b>	1
<b>Color</b>	Light Gray (RAL 7035)
<b>Grounding Type</b>	RF connector inner conductor and body grounded to reflector and mounting bracket
<b>Performance Note</b>	Outdoor usage
<b>Radome Material</b>	Fiberglass, UV resistant
<b>Radiator Material</b>	Aluminum   Low loss circuit board
<b>Reflector Material</b>	Aluminum
<b>RF Connector Interface</b>	4.3-10 Female
<b>RF Connector Location</b>	Bottom
<b>RF Connector Quantity, high band</b>	20
<b>RF Connector Quantity, low band</b>	4
<b>RF Connector Quantity, total</b>	24

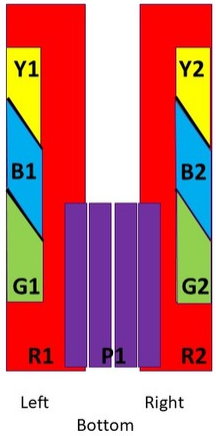
## Remote Electrical Tilt (RET) Information

<b>RET Hardware</b>	CommRET v2
<b>RET Interface</b>	8-pin DIN Female   8-pin DIN Male
<b>RET Interface, quantity</b>	1 female   1 male
<b>Input Voltage</b>	10–30 Vdc
<b>Internal RET</b>	High band (5)   Low band (2)
<b>Power Consumption, idle state, maximum</b>	1 W

# RRYYHHTTS4-65A-R7

<b>Power Consumption, normal conditions, maximum</b>	8 W
<b>Protocol</b>	3GPP/AISG 2.0 (Single RET)
<b>Dimensions</b>	
<b>Width</b>	498 mm   19.606 in
<b>Depth</b>	197 mm   7.756 in
<b>Length</b>	1499 mm   59.016 in
<b>Net Weight, without mounting kit</b>	39.2 kg   86.421 lb
<b>TDD Column Spacing</b>	42 mm   1.654 in

## Array Layout



Array	Freq (MHz)	Conns	RET (SRET)	AISG RET UID
R1	694-960	1-2	1	CPxxxxxxxxxxxxxxxxR1
R2	694-960	3-4	2	CPxxxxxxxxxxxxxxxxR2
G1	1427-1518	5-6	3	CPxxxxxxxxxxxxxxxxG1
G2	1427-1518	7-8		
B1	1695-2180	9-10	4	CPxxxxxxxxxxxxxxxxB1
B2	1695-2180	11-12	5	CPxxxxxxxxxxxxxxxxB2
Y1	2490-2690	13-14	6	CPxxxxxxxxxxxxxxxxY1
Y2	2490-2690	15-16		
P1	3300-3800	17-24	7	CPxxxxxxxxxxxxxxxxP1

(Sizes of colored boxes are not true depictions of array sizes)

COMMSCOPE

## Port Configuration

# RRYYHHTTS4-65A-R7



## Electrical Specifications

<b>Impedance</b>	50 ohm
<b>Operating Frequency Band</b>	1427 – 1518 MHz   1695 – 2180 MHz   2496 – 2690 MHz   3300 – 3800 MHz   694 – 960 MHz
<b>Polarization</b>	±45°
<b>Total Input Power, maximum</b>	900 W @ 50 °C

## Electrical Specifications

	R1-R2	R1-R2	R1-R2	G1-G2	B1-B2	Y1-Y2	P1
<b>Frequency Band, MHz</b>	<b>694–790</b>	<b>790–890</b>	<b>890–960</b>	<b>1427–1518</b>	<b>1695–2180</b>	<b>2490–2690</b>	<b>3300–3800</b>
<b>Gain, dBi</b>	13.4	13.5	13.8	14.9	15.9	16.8	15.9
<b>Beamwidth, Horizontal, degrees</b>	60	60	60	59	68	57	91
<b>Beamwidth, Vertical, degrees</b>	17.2	15.8	15	8.1	6.5	4.9	6.5
<b>Beam Tilt, degrees</b>	2–16	2–16	2–16	2–12	2–12	2–12	2–12
<b>USLS (First Lobe), dB</b>	21	17	17	17	17	16	16
<b>Front-to-Back Ratio at 180°, dB</b>	30	29	29	31	29	30	28
<b>Coupling level, Amp, Antenna port to Cal port, dB</b>							26

# RRYYHHTTS4-65A-R7

<b>Coupling level, max Amp Δ, Antenna port to Cal port, dB</b>							±2
<b>Coupler, max Amp Δ, Antenna port to Cal port, dB</b>							0.9
<b>Coupler, max Phase Δ, Antenna port to Cal port, degrees</b>							9
<b>Isolation, Cross Polarization, dB</b>	26	26	26	25	25	25	25
<b>Isolation, Inter-band, dB</b>	26	26	26	28	28	28	20
<b>VSWR   Return loss, dB</b>	1.5 14.0	1.5 14.0	1.5 14.0	1.5 14.0	1.5 14.0	1.5 14.0	1.5 14.0
<b>PIM, 3rd Order, 2 x 20 W, dBc</b>	-150	-150	-150	-150	-150	-150	-145
<b>Input Power per Port at 50°C, maximum, watts</b>	300	300	300	250	250	150	75

## Electrical Specifications, BASTA

Frequency Band, MHz	694–790	790–890	890–960	1427–1518	1695–2180	2490–2690	3300–3800
<b>Gain by all Beam Tilts, average, dBi</b>	13.1	13.1	13.5	14.5	15.3	16.2	15.2
<b>Gain by all Beam Tilts Tolerance, dB</b>	±0.6	±0.6	±0.4	±0.8	±0.8	±0.9	±0.8
<b>Gain by Beam Tilt, average, dBi</b>	2° 13.2 9° 13.1 16° 12.9	2° 13.2 9° 13.2 16° 12.9	2° 13.5 9° 13.6 16° 13.4	2° 14.3 7° 14.5 12° 14.5	2° 14.8 7° 15.6 12° 15.6	2° 15.5 7° 16.6 12° 16.3	2° 15.0 7° 15.4 12° 15.2
<b>Beamwidth, Horizontal Tolerance, degrees</b>	±8.4	±6.8	±5.2	±5	±5.5	±4.6	±19.2
<b>Beamwidth, Vertical Tolerance, degrees</b>	±1.1	±1.2	±1.1	±0.5	±0.8	±0.3	±0.6
<b>USLS, beampeak to 20° above beampeak, dB</b>	16	16	15	13	15	13	14
<b>Front-to-Back Total Power at 180° ± 30°, dB</b>	20	19	21	24	23	25	21
<b>CPR at Boresight, dB</b>	20	19	19	13	18	16	15

## Electrical Specifications, Broadcast 65°

<b>Frequency Band, MHz</b>	<b>3300–3800</b>
<b>Gain, dBi</b>	16.5
<b>Beamwidth, Horizontal, degrees</b>	63
<b>Beamwidth, Vertical, degrees</b>	6.6
<b>USLS (First Lobe), dB</b>	17

# RRYYHHTTS4-65A-R7

## Electrical Specifications, Service Beam

<b>Frequency Band, MHz</b>	<b>3300–3800</b>
<b>Steered 0° Gain, dBi</b>	20.6
<b>Steered 0° Beamwidth, Horizontal, degrees</b>	24
<b>Steered 0° Front-to-Back Total Power at 180° ± 30°, dB</b>	27
<b>Steered 0° Horizontal Sidelobe, dB</b>	15
<b>Steered 30° Gain, dBi</b>	19.7
<b>Steered 30° Beamwidth, Horizontal, degrees</b>	27
<b>Steered 30° Front-to-Back Total Power at 180° ± 30°, dB</b>	26

## Electrical Specifications, Soft Split

<b>Frequency Band, MHz</b>	<b>3300–3800</b>
<b>Gain, dBi</b>	19.6
<b>Beamwidth, Horizontal, degrees</b>	32
<b>CPR at Beampeak, dB</b>	16
<b>Front-to-Back Total Power at 180° ± 30°, dB</b>	26
<b>Horizontal Sidelobe, dB</b>	19

## Mechanical Specifications

<b>Mechanical Tilt Range</b>	0°–15°
<b>Wind Loading @ Velocity, frontal</b>	549.0 N @ 150 km/h (123.4 lbf @ 150 km/h)
<b>Wind Loading @ Velocity, lateral</b>	183.0 N @ 150 km/h (41.1 lbf @ 150 km/h)
<b>Wind Loading @ Velocity, maximum</b>	712.0 N @ 150 km/h (160.1 lbf @ 150 km/h)
<b>Wind Loading @ Velocity, rear</b>	452.0 N @ 150 km/h (101.6 lbf @ 150 km/h)
<b>Wind Speed, maximum</b>	241 km/h (150 mph)

## Packaging and Weights

<b>Width, packed</b>	608 mm   23.937 in
<b>Depth, packed</b>	352 mm   13.858 in
<b>Length, packed</b>	1682 mm   66.221 in

# RRYYHHTTS4-65A-R7

---

**Weight, gross**

50.6 kg | 111.554 lb

## Regulatory Compliance/Certifications

**Agency**

**Classification**

CHINA-ROHS

Below maximum concentration value

ISO 9001:2015

Designed, manufactured and/or distributed under this quality management system

REACH-SVHC

Compliant as per SVHC revision on [www.commscope.com/ProductCompliance](http://www.commscope.com/ProductCompliance)

ROHS

Compliant

UK-ROHS

Compliant/Exempted



## Included Products

BSAMNT-3

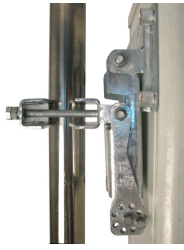
- Wide Profile Antenna Downtilt Mounting Kit for 2.4 - 4.5 in (60 - 115 mm) OD round members. Kit contains one scissor top bracket set and one bottom bracket set.

## \* Footnotes

**Performance Note**

Severe environmental conditions may degrade optimum performance

# BSAMNT-3



Wide Profile Antenna Downtilt Mounting Kit for 2.4 - 4.5 in (60 - 115 mm) OD round members. Kit contains one scissor top bracket set and one bottom bracket set.

## Product Classification

**Product Type** Downtilt mounting kit

## General Specifications

**Application** Outdoor

**Color** Silver

## Dimensions

**Compatible Diameter, maximum** 115 mm | 4.528 in

**Compatible Diameter, minimum** 60 mm | 2.362 in

**Weight, net** 6.2 kg | 13.669 lb

## Material Specifications

**Material Type** Galvanized steel

## Packaging and Weights

**Included** Brackets | Hardware

**Packaging quantity** 1

**Weight, gross** 6.4 kg | 14.11 lb

## Regulatory Compliance/Certifications

Agency	Classification
CE	Compliant with the relevant CE product directives
CHINA-ROHS	Below maximum concentration value
ISO 9001:2015	Designed, manufactured and/or distributed under this quality management system
REACH-SVHC	Compliant as per SVHC revision on <a href="http://www.commscope.com/ProductCompliance">www.commscope.com/ProductCompliance</a>
ROHS	Compliant
UK-ROHS	Compliant

# BSAMNT-3

---

