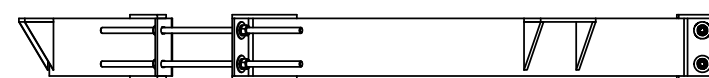
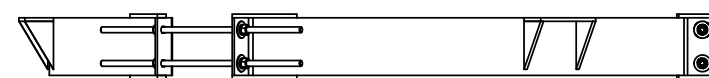
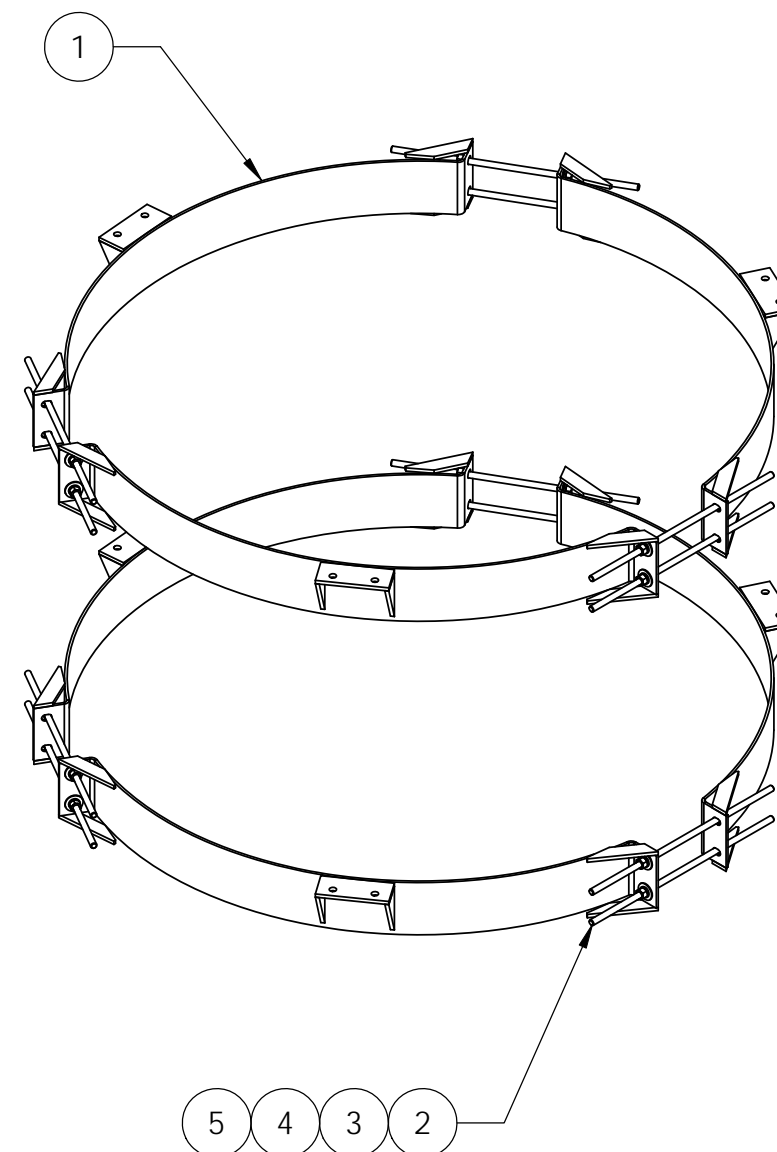
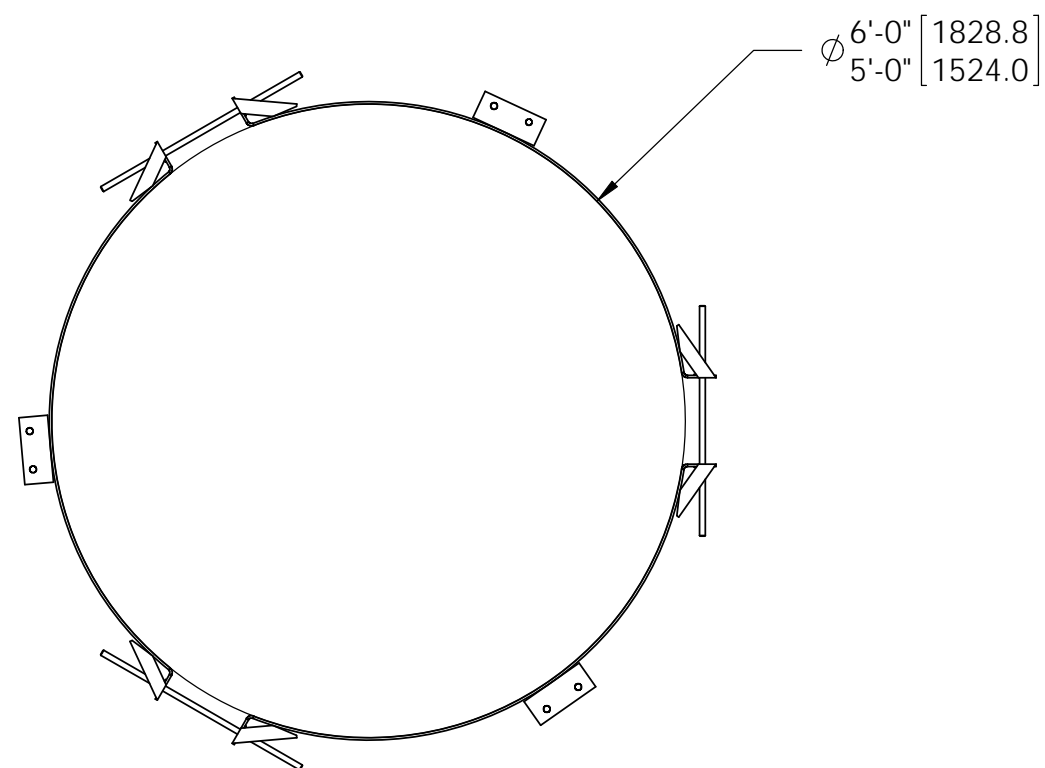



ITEM	PART NO.	DESCRIPTION	QTY.	WEIGHT
1	MTC82115601	Mounting Clamp	6	35.03 LBS
2	MT-382-24	5/8" X 24" THREADED ROD	12	1.93 LBS
3	GN-05	5/8" GALV HEX NUT	24	0.04 LBS
4	GWL-05	5/8" GALV LOCK WASHER	24	0.09 LBS
5	GWF-05	5/8" GALV FLAT WASHER	24	0.06 LBS

REVISIONS				
REV.	ZONE	DESCRIPTION	BY	DATE
A		INITIAL RELEASE	OGG	09/07/10



NOTES:
1. ALL METRIC DIMENSIONS ARE IN BRACKETS.

<small>These drawings and specifications are the proprietary property of ANDREW CORPORATION and may be used only for the specific purpose authorized in writing by Andrew Corporation.</small> ALL DIMENSIONS ARE IN INCHES U.O.S. TOLERANCES UNLESS OTHERWISE SPECIFIED: .X = ± .12 ANGLES ±2° .XX = ± .06 FRACTIONS ±1/32 .XXX = ± .03 REMOVE BURRS AND BREAK EDGES .005 DO NOT SCALE THIS PRINT	DRAWN BY: OGG	SHEET: 1 of 1	PART NUMBER: CM-R56
	CHECKED BY: TP	SCALE: NTS	DESCRIPTION: 5' OD - 6' OD Offset Pipe Chimney Ringmount
	DATE: 09/03/10	MATERIAL: A36	DRAWING TYPE: ASSEMBLY DRAWING
	REVISION: A	FINISH: GALV A123	 WESTCHESTER, IL. 60154 U.S.A.
	WEIGHT: 237.23 LBS		