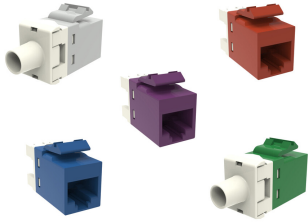


## Base Product



## SL-Series Modular Jack, RJ45, Cat6 Unshielded

### Product Classification

#### Regional Availability

Asia | Australia/New Zealand | EMEA | Latin America

#### Portfolio

NETCONNECT®

#### Product Type

Modular jack

#### Product Series

SL Series

### General Specifications

#### ANSI/TIA Category

6

#### Cable Type

Unshielded

#### Conductor Type

Solid | Stranded

#### Mounting

SL Series faceplates and panels

#### Outlet Feature

Inverted jack face

#### Outlet Type

Standard

#### Termination Punchdowns, minimum

200 times

#### Termination Tool

SL Termination tool

#### Termination Type

IDC

#### Transmission Standards

ANSI/TIA-568.2-D | ISO/IEC 11801 Class E

#### Wiring

T568A | T568B

### Dimensions

#### Panel Cutout, recommended

14.78 x 20.07 mm (0.58 x 0.79 in)

#### Panel Thickness, recommended

1.6 mm | 0.063 in

#### Height

16.13 mm | 0.635 in

#### Width

14.48 mm | 0.57 in

#### Depth

30.48 mm | 1.2 in

#### Compatible Cable Diameter, maximum

5.8 mm | 0.228 in

# 1375055

---

<b>Compatible Insulated Conductor Diameter, maximum</b>	1.45 mm   0.057 in
<b>Contact Plating Thickness</b>	1.27 $\mu$ m
<b>Compatible Conductor Gauge, solid</b>	24–22 AWG
<b>Compatible Conductor Gauge, stranded</b>	26–24 AWG

## Electrical Specifications

<b>Contact Resistance Variation, maximum</b>	20 mOhm
<b>Contact Resistance, maximum</b>	100 mOhm
<b>Current Rating at Temperature</b>	1.5 A @ 20 °C   1.5 A @ 68 °F
<b>Dielectric Withstand Voltage, RMS, conductive surface</b>	1,500 Vac @ 60 Hz
<b>Dielectric Withstand Voltage, RMS, contact-to-contact</b>	1,000 Vac @ 60 Hz
<b>Insulation Resistance, minimum</b>	500 mOhm
<b>Remote Powering</b>	Fully supports the safe delivery of power over LAN cabling described by IEEE 802.3bt (Type 4) and complies with the unmating under electrical load requirements prescribed by IEC 60512-99-002
<b>PoE Durability</b>	Supports IEEE 802.3bt Type 4 (90 W) applications after 3000 plug to jack mating cycles
<b>Safety Voltage Rating</b>	150 Vac

## Material Specifications

<b>Contact Base Material</b>	Beryllium copper
<b>Contact Plating Material</b>	Gold
<b>Material Type</b>	Polycarbonate
<b>Termination Contact Plating</b>	Tin

## Mechanical Specifications

<b>Plug Retention Force, minimum</b>	50 N   11.24 lbf
<b>Plug to Jack Mating Cycles</b>	Complies to IEC 60603-7 series

## Environmental Specifications

<b>Operating Temperature</b>	-10 °C to +60 °C (+14 °F to +140 °F)
<b>Flammability Rating</b>	UL 94 V-0
<b>Safety Standard</b>	UL   cUL