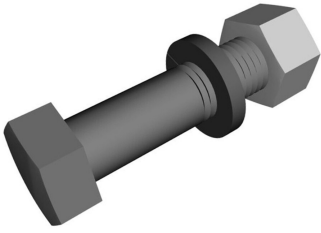


# GB-03125

---



Galvanized Bolt Kit, Grade 5, 3/8 in x 1-1/4 in

## Product Classification

**Product Type** Bolt kit

## Dimensions

**Height** 25.4 mm | 1 in

**Width** 25.4 mm | 1 in

**Length** 33.02 mm | 1.3 in

**Pipe Outer Diameter** 10.16 mm | 0.4 in

## Material Specifications

**Material Type** Hot dip galvanized steel

**Material Grade** Grade 5

## Packaging and Weights

**Included** Bolts | Nuts | Washers

**Packaging quantity** 1

## Regulatory Compliance/Certifications

Agency	Classification
CHINA-ROHS	Below maximum concentration value
ISO 9001:2015	Designed, manufactured and/or distributed under this quality management system
REACH-SVHC	Compliant as per SVHC revision on <a href="http://www.commscope.com/ProductCompliance">www.commscope.com/ProductCompliance</a>
ROHS	Compliant
UK-ROHS	Compliant



## Included Products

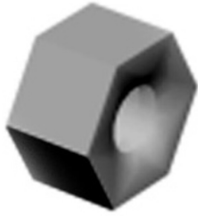
# GB-03125

---

- GN-03 - Galvanized Hex Nut, 3/8 in
- GWL-03 - Galvanized Lock Washer, 3/8 in

# GN-03

---



Galvanized Hex Nut, 3/8 in

## Product Classification

**Product Type** Nut

## Dimensions

**Height** 25.4 mm | 1 in

**Width** 25.4 mm | 1 in

**Length** 25.4 mm | 1 in

**Inner Diameter** 10.16 mm | 0.4 in

## Material Specifications

**Material Type** Hot dip galvanized steel

## Packaging and Weights

**Included** Nuts

**Packaging quantity** 1

## Regulatory Compliance/Certifications

Agency	Classification
CHINA-ROHS	Below maximum concentration value
ISO 9001:2015	Designed, manufactured and/or distributed under this quality management system
REACH-SVHC	Compliant as per SVHC revision on <a href="http://www.commscope.com/ProductCompliance">www.commscope.com/ProductCompliance</a>
ROHS	Compliant
UK-ROHS	Compliant



# GWL-03

---



Galvanized Lock Washer, 3/8 in

## Product Classification

**Product Type** Washer

## Dimensions

**Height** 25.4 mm | 1 in

**Width** 25.4 mm | 1 in

**Length** 25.4 mm | 1 in

**Inner Diameter** 10.16 mm | 0.4 in

## Material Specifications

**Material Type** Hot dip galvanized steel

## Packaging and Weights

**Included** Washers

**Packaging quantity** 1

## Regulatory Compliance/Certifications

Agency	Classification
CHINA-ROHS	Below maximum concentration value
ISO 9001:2015	Designed, manufactured and/or distributed under this quality management system
REACH-SVHC	Compliant as per SVHC revision on <a href="http://www.commscope.com/ProductCompliance">www.commscope.com/ProductCompliance</a>
ROHS	Compliant
UK-ROHS	Compliant

