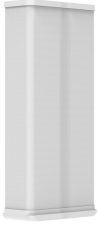


# AEKT-430-E1

---



## Antenna Enclosure Kit

- Innovative flexible modular solution enabling suitable sites to be upgraded to 5G capability
- The module installs directly above an existing, suitable passive antenna to provide the appearance of a single integrated antenna unit – potentially simplifying site zoning approvals
- Installed antenna units can be swapped out on site - e.g. to perform capacity upgrades
- Compatible specifically with antennas featuring CommScope's 430 x 197 mm (WxD) radome housing
- Can be deployed as a standalone solution
- Compatible with certain specific Ericsson Active Antenna System Products (AAS)
- Includes Antenna Enclosure Housing, Installation Kit for compatible Ericsson mMIMO Active Antenna (AAS), AEKT-430-E1 Mounting Hardware, protective "Windshield" Panels and Top Cap
- A Mounting Kit for the antenna installed below the AEKT-430 unit should be ordered separately (required when installing the AEKT-430-E1 module directly on top of an antenna)
- Contact your Commscope representative for further details. For a list of supported Ericsson AAS products please contact Ericsson

## General Specifications

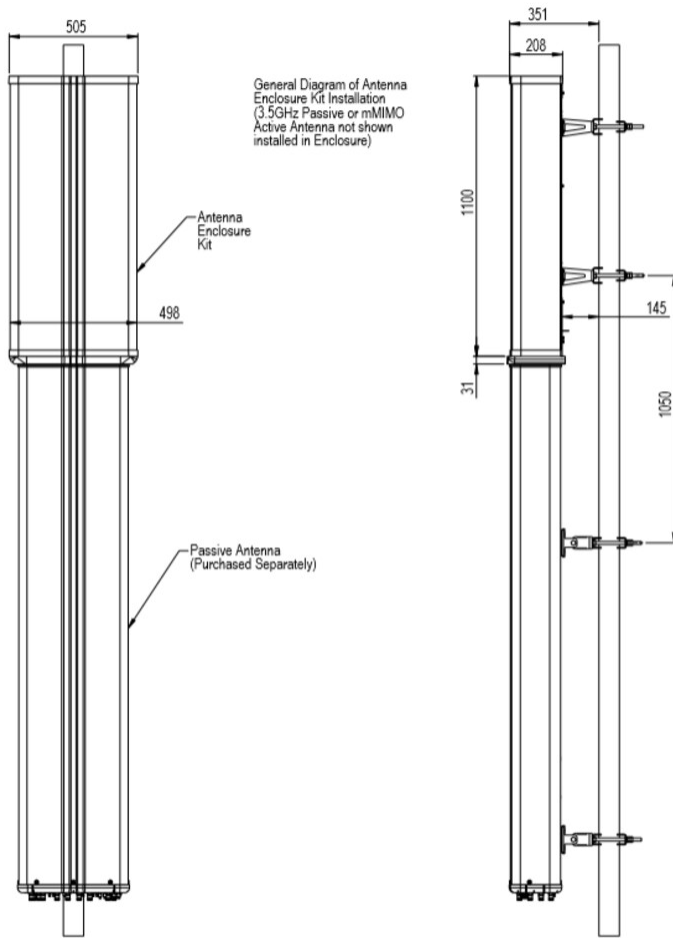
<b>Antenna Type</b>	Antenna enclosure kit
<b>Color</b>	Light Gray (RAL 7035)
<b>Performance Note</b>	Outdoor usage
<b>Radome Material</b>	Fiberglass, UV resistant

## Dimensions

<b>Width</b>	498 mm   19.606 in
<b>Depth</b>	199 mm   7.835 in
<b>Length</b>	1100 mm   43.307 in
<b>Net Weight, without mounting kit</b>	9.29 kg   20.481 lb

## Application Drawing

# AEKT-430-E1



## Mechanical Specifications

<b>Wind Loading @ Velocity, frontal</b>	700.0 N @ 150 km/h (157.4 lbf @ 150 km/h)
<b>Wind Loading @ Velocity, lateral</b>	308.0 N @ 150 km/h (69.2 lbf @ 150 km/h)
<b>Wind Loading @ Velocity, maximum</b>	1,385.0 N @ 150 km/h (311.4 lbf @ 150 km/h)
<b>Wind Loading @ Velocity, rear</b>	700.0 N @ 150 km/h (157.4 lbf @ 150 km/h)
<b>Wind Speed, maximum</b>	241 km/h (150 mph)

## Packaging and Weights

<b>Width, packed</b>	620 mm   24.409 in
<b>Depth, packed</b>	350 mm   13.78 in
<b>Length, packed</b>	1430 mm   56.299 in

# AEKT-430-E1

---

**Weight, gross** 25.94 kg | 57.188 lb

**Weight, net** 19.65 kg | 43.321 lb

## Regulatory Compliance/Certifications

### Agency

CE

ISO 9001:2015



### Classification

Compliant with the relevant CE product directives

Designed, manufactured and/or distributed under this quality management system

## \* Footnotes

### Performance Note

Severe environmental conditions may degrade optimum performance