

RRVQ4-65D-R5



16-port sector antenna, 4 x 694-960 MHz (R1-R2), and 4 x 1695-2690 MHz (Y1-Y2) 65° HPBW, 8 x 2300-3800 MHz (P1), 90° HPBW, 5 x RET

- Includes 1x 4-Column Array for 2300-3800MHz and calibration port. Column spacing optimized to support Soft Split Beamforming
- Q4 array uses M-LOC cluster connectors
- 5 Internal RET's provide independent electrical tilt control for each array
- New aerodynamic endcaps for wind load optimization

General Specifications

Antenna Type	Sector- and beamforming
Band	Multiband
Calibration Connector Interface	M-LOC
Calibration Connector Quantity	1
Color	Light Gray (RAL 7035)
Grounding Type	RF connector inner conductor and body grounded to reflector and mounting bracket
Performance Note	Outdoor usage
Radome Material	Fiberglass, UV resistant
Reflector Material	Aluminum
RF Connector Interface	4.3-10 Female M-LOC
RF Connector Location	Bottom
RF Connector Quantity, high band	8
RF Connector Quantity, mid band	4
RF Connector Quantity, low band	4
RF Connector Quantity, total	16

Remote Electrical Tilt (RET) Information

RET Hardware	CommRET v2
RET Interface	8-pin DIN Female 8-pin DIN Male
RET Interface, quantity	2 female 2 male
Input Voltage	10-30 Vdc
Internal RET	High band (1) Low band (2) Mid band (2)
Power Consumption, active state, maximum	8 W

RRVQ4-65D-R5

Power Consumption, idle state, maximum

1 W

Protocol

3GPP/AISG 2.0 (Single RET)

Dimensions

Width

498 mm | 19.606 in

Depth

197 mm | 7.756 in

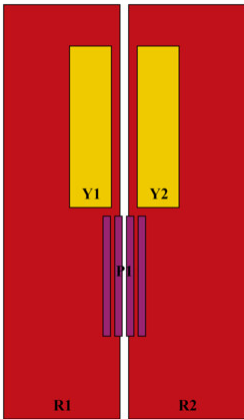
Length

2688 mm | 105.827 in

Net Weight, antenna only

51.8 kg | 114.199 lb

Array Layout

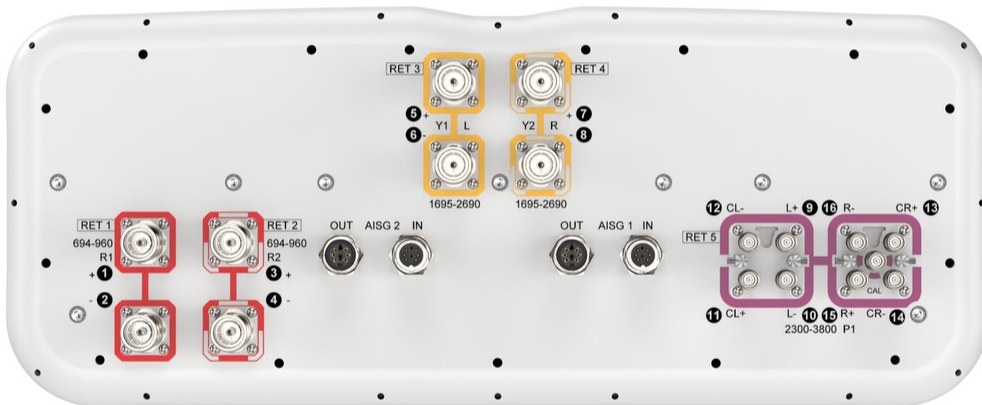


Array ID	Frequency (MHz)	RF Connector	RET (SRET)	AISG No.	AISG RET UID
R1	694-960	1 - 2	1	AISG1	CPxxxxxxxxxxxxxxxxR1
R2	694-960	3 - 4	2	AISG1	CPxxxxxxxxxxxxxxxxR2
Y1	1695-2690	5 - 6	3	AISG1	CPxxxxxxxxxxxxxxxxY1
Y2	1695-2690	7 - 8	4	AISG1	CPxxxxxxxxxxxxxxxxY2
P1	2300-3800	9 - 16	5	AISG1	CPxxxxxxxxxxxxxxxxP1

(Sizes of colored boxes are not true depictions of array sizes)

Port Configuration

RRVVQ4-65D-R5



Electrical Specifications

Impedance	50 ohm
Operating Frequency Band	1695 – 2690 MHz 2300 – 3800 MHz 694 – 960 MHz
Polarization	±45°
Total Input Power, maximum	900 W @ 50 °C

Electrical Specifications

Frequency Band, MHz	698–806	790–896	890–960	1695–1990	1920–2300	2300–2500	2490–2690
Beamwidth, Horizontal, degrees	70	63	63	61	63	71	71
Beamwidth, Vertical, degrees	8.8	7.9	7.3	7.2	6.4	5.7	5.3
Beam Tilt, degrees	2–12	2–12	2–12	2–12	2–12	2–12	2–12

RRVVQ4-65D-R5

USLS (First Lobe), dB	17	20	20	18	19	22	23
Front-to-Back Ratio at 180°, dB	32	30	32	31	33	32	29
CPR at Boresight, dB	20	19	18	20	20	17	19
CPR at Sector, dB	11	9	12	8	6	5	5
Isolation, Cross Polarization, dB	28	28	28	25	25	25	25
Isolation, Inter-band, dB	28	28	28	25	25	25	25
VSWR Return loss, dB	1.5 14.0	1.5 14.0	1.5 14.0	1.5 14.0	1.5 14.0	1.5 14.0	1.5 14.0
PIM, 3rd Order, 2 x 20 W, dBc	-150	-150	-150	-150	-150	-150	-150
Input Power per Port at 50°C, maximum, watts	300	300	300	250	250	200	200

Electrical Specifications, BASTA

Frequency Band, MHz	698–806	790–896	890–960	1695–1990	1920–2300	2300–2500	2490–2690
Gain by all Beam Tilts, average, dBi	15.6	15.9	16.2	16	16.5	16.6	16.4
Gain by all Beam Tilts Tolerance, dB	±0.3	±0.3	±0.5	±0.4	±0.5	±0.5	±0.4
Beamwidth, Horizontal Tolerance, degrees	±5.9	±4	±3.3	±6.2	±4.8	±4.3	±4.6
Beamwidth, Vertical Tolerance, degrees	±0.4	±0.5	±0.3	±0.6	±0.5	±0.3	±0.3
USLS, beampeak to 20° above beampeak, dB	17	18	18	16	17	16	17
Front-to-Back Total Power at 180° ± 30°, dB	22	22	23	26	27	26	25

Electrical Specifications

Frequency Band, MHz	2300–2500	2490–2690	3400–3600	3600–3800
Beamwidth, Horizontal, degrees	84	88	66	62
Beamwidth, Vertical, degrees	6.1	5.9	5.2	5.1
Beam Tilt, degrees	2–12	2–12	2–12	2–12
USLS (First Lobe), dB	14	14	14	14
Front-to-Back Ratio at 180°, dB	31	32	27	29
Coupling level, Amp, Antenna port to Cal port, dB	-26	-26	-26	-26
Coupling level, max Amp Δ,	±2	±2	±2	±2

RRVVQ4-65D-R5

Antenna port to Cal port, dB

Coupler, max Amp Δ, Antenna port to Cal port, dB	0.9	0.9	0.9	0.9
Coupler, max Phase Δ, Antenna port to Cal port, degrees	7	7	7	7
CPR at Boresight, dB	15	17	17	15
CPR at Sector, dB	9	7	7	5
Isolation, Cross Polarization, dB	23	23	23	23
Isolation, Inter-band, dB	25	25	25	25
Isolation, Co-polarization, dB	20	20	20	20
VSWR Return loss, dB	1.5 14.0	1.5 14.0	1.5 14.0	1.5 14.0
PIM, 3rd Order, 2 x 20 W, dBc	-140	-140	-140	-140
Input Power per Port at 50°C, maximum, watts	75	75	75	75

Electrical Specifications, BASTA

Frequency Band, MHz	2300–2500	2490–2690	3400–3600	3600–3800
Gain by all Beam Tilts, average, dBi	14.7	15.2	15.8	15.9
Gain by all Beam Tilts Tolerance, dB	±1	±0.7	±0.8	±0.9
Beamwidth, Horizontal Tolerance, degrees	±23.7	±16.5	±8.3	±10
Beamwidth, Vertical Tolerance, degrees	±0.5	±0.4	±0.2	±0.2
USLS, beampeak to 20° above beampeak, dB	11	12	12	11
Front-to-Back Total Power at 180° ± 30°, dB	22	25	23	23

Electrical Specifications, Broadcast 65°

Frequency Band, MHz	2300–2500	2490–2690	3400–3600	3600–3800
Gain, dBi	17.3	18.3	17.4	17.5
Beamwidth, Horizontal, degrees	65	65	65	65
Beamwidth, Vertical, degrees	5.9	5.8	5.2	5.1
Front-to-Back Total Power at 180° ± 30°, dB	26	30	24	24

RRVQ4-65D-R5

USLS (First Lobe), dB	14	15	15	14
------------------------------	----	----	----	----

Electrical Specifications, Envelope Pattern

Frequency Band, MHz	2300–2500	2490–2690	3400–3600	3600–3800
Gain, dBi	20.1	20.5	21.8	21.9
Beamwidth, Horizontal at 10 dB, degrees	128	121	124	118
Front-to-Back Total Power at 180° ± 30°, dB	28	29	28	27
USLS (First Lobe), dB	16	15	15	14

Electrical Specifications, Service Beam

Frequency Band, MHz	2300–2500	2490–2690	3400–3600	3600–3800
Steered 0° Gain, dBi	20.2	20.5	21.8	21.8
Steered 0° Beamwidth, Horizontal, degrees	24	25	19	18
Steered 0° Front-to-Back Total Power at 180° ± 30°, dB	30	32	29	29
Steered 0° Horizontal Sidelobe, dB	14	12	14	14
Steered 30° Gain, dBi	19.4	20.2	19.5	19.9
Steered 30° Beamwidth, Horizontal, degrees	29	27	24	20
Steered 30° Front-to-Back Total Power at 180° ± 30°, dB	30	31	26	26

Electrical Specifications, Soft Split

Frequency Band, MHz	2300–2500	2490–2690
Gain, dBi	19.3	19.9
Beamwidth, Horizontal, degrees	31	30
Front-to-Back Total Power at 180° ± 30°, dB	29	31
Horizontal Sidelobe, dB	20	19
USLS (First Lobe), dB	17	16

Mechanical Specifications

Wind Loading @ Velocity, frontal	944.0 N @ 150 km/h (212.2 lbf @ 150 km/h)
Wind Loading @ Velocity, lateral	292.0 N @ 150 km/h (65.6 lbf @ 150 km/h)

RRVQ4-65D-R5

Wind Loading @ Velocity, maximum	1,130.0 N @ 150 km/h (254.0 lbf @ 150 km/h)
Wind Loading @ Velocity, rear	650.0 N @ 150 km/h (146.1 lbf @ 150 km/h)
Wind Speed, maximum	241 km/h (150 mph)

Packaging and Weights

Width, packed	565 mm 22.244 in
Depth, packed	309 mm 12.165 in
Length, packed	2935 mm 115.551 in
Weight, gross	73.6 kg 162.26 lb

Regulatory Compliance/Certifications

Agency	Classification
CHINA-ROHS	Above maximum concentration value
ISO 9001:2015	Designed, manufactured and/or distributed under this quality management system
ROHS	Compliant/Exempted
UK-ROHS	Compliant/Exempted



Included Products

BSAMNT-4	-	Wide Profile Antenna Downtilt Mounting Kit for 2.4 - 4.5 in (60 - 115 mm) OD round members. Kit contains one scissor top bracket set and one bottom bracket set.
BSAMNT-M4	-	Middle Downtilt Mounting Kit for Long Antennas for 2.4 - 4.5 in (60 - 115 mm) OD round members. Kit contains one scissor bracket set.

* Footnotes

Performance Note	Severe environmental conditions may degrade optimum performance
-------------------------	---

BSAMNT-4



Wide Profile Antenna Downtilt Mounting Kit for 2.4 - 4.5 in (60 - 115 mm) OD round members. Kit contains one scissor top bracket set and one bottom bracket set.

Product Classification

Product Type Downtilt mounting kit

General Specifications

Application Outdoor

Color Silver

Dimensions

Compatible Diameter, maximum 115 mm | 4.528 in

Compatible Diameter, minimum 60 mm | 2.362 in

Weight, net 6.5 kg | 14.33 lb

Material Specifications

Material Type Galvanized steel

Packaging and Weights

Included Brackets | Hardware

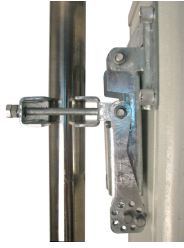
Packaging quantity 1

Regulatory Compliance/Certifications

Agency	Classification
CHINA-ROHS	Below maximum concentration value
ISO 9001:2015	Designed, manufactured and/or distributed under this quality management system
REACH-SVHC	Compliant as per SVHC revision on www.commscope.com/ProductCompliance
ROHS	Compliant
UK-ROHS	Compliant



BSAMNT-M4



Middle Downtilt Mounting Kit for Long Antennas for 2.4 - 4.5 in (60 - 115 mm) OD round members. Kit contains one scissor bracket set.

Product Classification

Product Type Downtilt mounting kit

General Specifications

Application Outdoor

Color Silver

Dimensions

Compatible Diameter, maximum 115 mm | 4.528 in

Compatible Diameter, minimum 60 mm | 2.362 in

Weight, net 4.6 kg | 10.141 lb

Material Specifications

Material Type Galvanized steel

Packaging and Weights

Included Brackets | Hardware

Packaging quantity 1

Regulatory Compliance/Certifications

Agency	Classification
CHINA-ROHS	Below maximum concentration value
ISO 9001:2015	Designed, manufactured and/or distributed under this quality management system
REACH-SVHC	Compliant as per SVHC revision on www.commscope.com/ProductCompliance
ROHS	Compliant
UK-ROHS	Compliant

