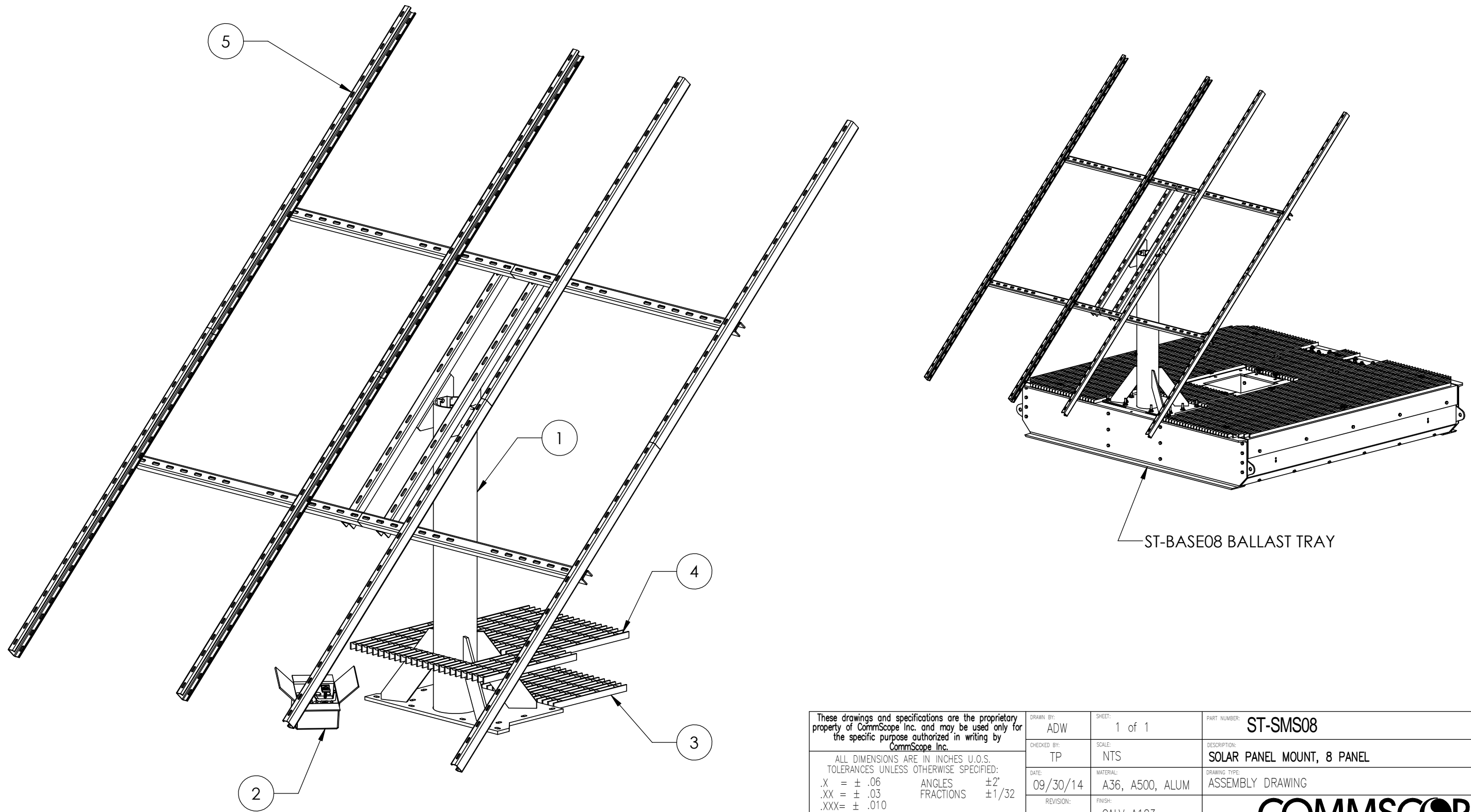


ITEM	PART NO.	DESCRIPTION	QTY.	WEIGHT	NOTE NO.
1	STSLR10	SOLAR PANEL MOUNT 6" WELDMENT	1	147.27 LBS	
2	STSLRHK	ST-SLR HARDWARE KIT	1	4.57 LBS	
3	SBT28	20.4 X 15.5 BAR GRATING	1	15.68 LBS	
4	SBT30	28.7" x 34.50" BAR GRATING	1	38.29 LBS	
5	SMS08	8 PANEL FRAME	1	108	


REVISIONS				
REV.	ECN	DESCRIPTION	BY	DATE
A	8000005337	INITIAL RELEASE	ADW	09/30/14



These drawings and specifications are the proprietary property of CommScope Inc. and may be used only for the specific purpose authorized in writing by CommScope Inc.

ALL DIMENSIONS ARE IN INCHES U.O.S.
TOLERANCES UNLESS OTHERWISE SPECIFIED:
.X = ± .06 ANGLES ±2°
.XX = ± .03 FRACTIONS ±1/32
.XXX = ± .010

REMOVE BURRS AND BREAK EDGES .005
DO NOT SCALE THIS PRINT

DRAWN BY: ADW	SHEET: 1 of 1	PART NUMBER: ST-SMS08
CHECKED BY: TP	SCALE: NTS	DESCRIPTION: SOLAR PANEL MOUNT, 8 PANEL
DATE: 09/30/14	MATERIAL: A36, A500, ALUM	DRAWING TYPE: ASSEMBLY DRAWING
REVISION: A	FINISH: GALV A123	 Hickory, NC 28602 U.S.A.
	WEIGHT: 303.23 LBS	