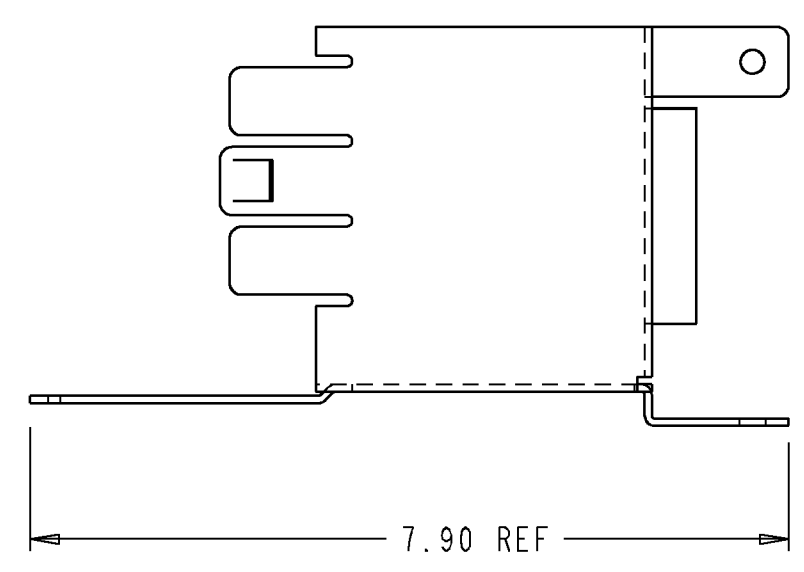
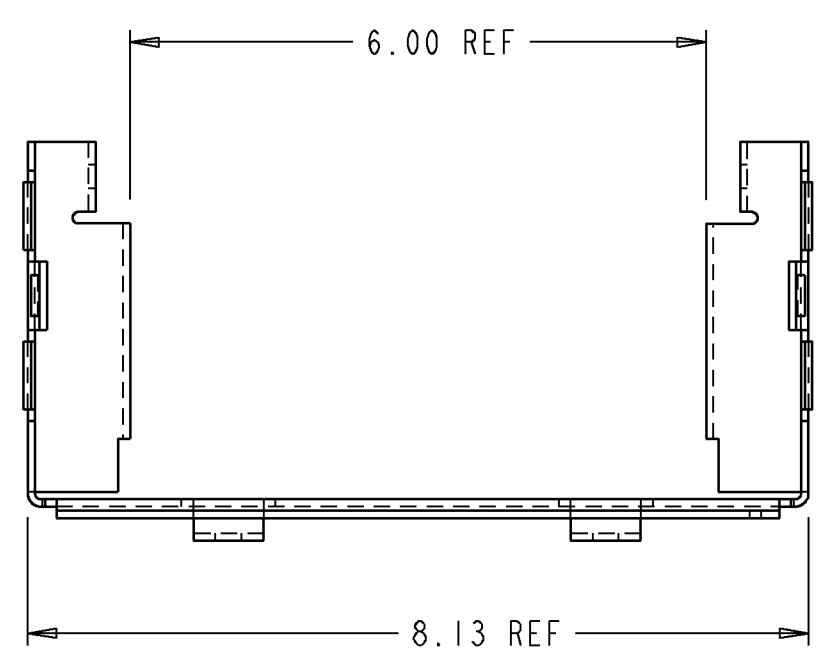
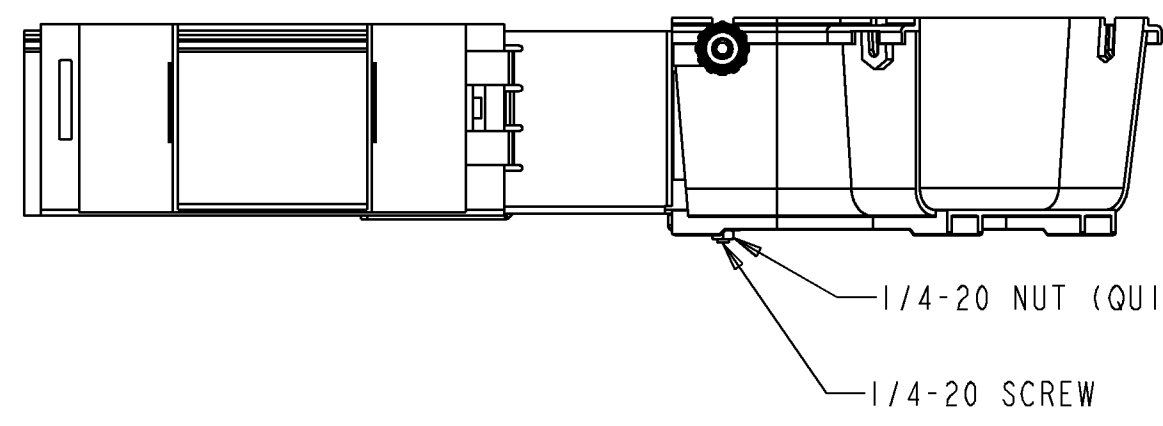
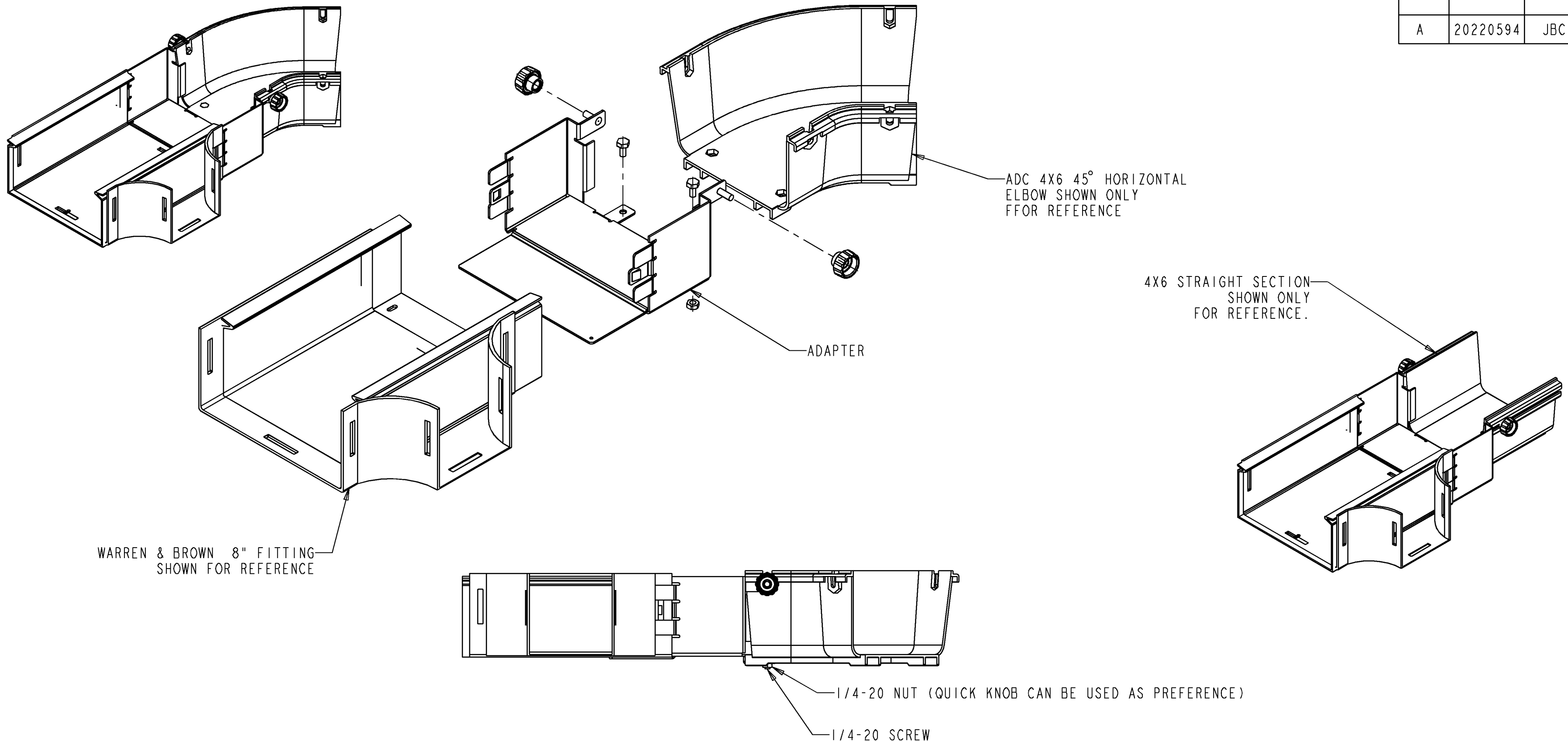


REV	MCO	DWN	DATE
A	20220594	JBC	22-JUL-07



- NOTES:**
- PARTS INCLUDED WITH KIT ARE AS FOLLOW:
 (1) ADAPTER
 (2) 1/4-20 HEX SCREW
 (2) 1/4-20 NUT
 (4) KNOB PLASTIC
 NOTE: EXTRA PARTS CAN BE INCLUDED

- ATTACHING THE ADAPTER TO THE WARREN & BROWN LINK:
- MATE THE ADAPTER TO THE WARREN & BROWN COMPONENT AS SHOWN. SIDES OF THE ADAPTER WILL NEED TO BE SQUEEZED INWARD SLIGHTLY.
 - MATE THE ADAPTER TO THE ADC GUIDE WITH KNOBS AND 1/4-20 SREW AND NUT.
 - CUT AND APPLY TAPE ALONG SEAMS WHERE THE ADATER MEETS THE TROUGH IF IT IS REQUIRED.

CATALOG#: FGS-ACC087



INFORMATION ON THIS DOCUMENT IS PROPRIETARY TO ADC AND SHALL NOT BE USED, COPIED, REPRODUCED OR DISCLOSED IN WHOLE OR IN PART WITHOUT WRITTEN CONSENT OF ADC.		TITLE	ADAPTER KIT 6" FGS TO 8" WARREN INST DRAWING
ALL DIMS AND TOLERANCES ARE INCHES UNLESS OTHERWISE SPECIFIED	.XX:±REF .XXX:±REF ANGULAR:±N/A	C SIZE	DRAWING NUMBER 1414893
DO NOT SCALE DRAWING	ENGR: J. BARRAZA DWN: J. BARRAZA	A REV	
		SHT. 1 OF 1	

**DIMENSIONS IN INCHES
THIRD ANGLE PROJECTION**