

860674607-041-42 | HG ANCHOR, GUYED-TOWER, 41" or 42" FACE



Cable Support Mount for Guyed Towers to Support Cable, 41 or 42" Face

The 860674607-041-42 is a purpose built tower face bracket that is designed to support 1000 pounds of cable per eye up to 2000 pounds in combination. Ideal for Hybrid cable. Includes mounting eye bolt for attachment.

-Product is designed to be field installed as needed on tower legs and across the tower face to provide an engineered attachment point for the support of cables.

-Can be installed inside or outside of tower face.

-Stands off tower to allow other cables to pass.

-Supports towers with a 41" or 42" face width (center to center of leg) and 1.5"-3" Diameter Legs.

-Additional units can be installed along the tower face as needed to support additional cables.

-Not to be used for hoisting.

-Competent person to make determination of usage on the structure.

Product Classification

Portfolio	CommScope®
Product Type	Hoisting Grip Anchor
Ordering Note	CommScope® standard product with terms
Warranty	One year

General Specifications

Cable Runs, quantity	3
Mounting	Round member

Material Specifications

Material Type	Hot dip galvanized steel
----------------------	--------------------------

Packaging and Weights

Included	Attachment kits
Packaging quantity	1

860674607-041-42 | HG ANCHOR,GUYED-TOWER,41" or 42" FACE

Included Products

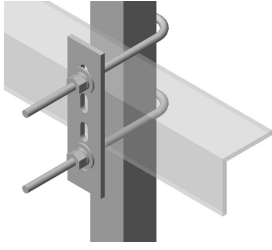
- HK-CL-U – Universal Cable Ladder Hardware Kit for 1 in to 4-1/2 in round or angle members

* Footnotes

Warranty

For more information, please consult our Product Warranty guidelines

HK-CL-U



Universal Cable Ladder Hardware Kit for 1 in to 4-1/2 in round or angle members

Product Classification

Portfolio	CommScope®
Product Type	Ladder kit
Ordering Note	CommScope® standard product (Global)

General Specifications

Cable Runs, quantity	0
Mounting	Round and angle legs

Dimensions

Height	203.2 mm 8 in
Width	127 mm 5 in
Length	203.2 mm 8 in
Mounting Diameter, maximum	114.3 mm 4.5 in
Mounting Diameter, minimum	25.4 mm 1 in

Material Specifications

Material Type	Hot dip galvanized steel
----------------------	--------------------------

Packaging and Weights

Included	J-bolts Plates
Packaging quantity	1
Weight, net	1.7 kg 3.748 lb

Regulatory Compliance/Certifications

Agency	Classification
CHINA-ROHS	Above maximum concentration value
ISO 9001:2015	Designed, manufactured and/or distributed under this quality management system

HK-CL-U

ROHS Compliant/Exempted

UK-ROHS Compliant/Exempted

