

4

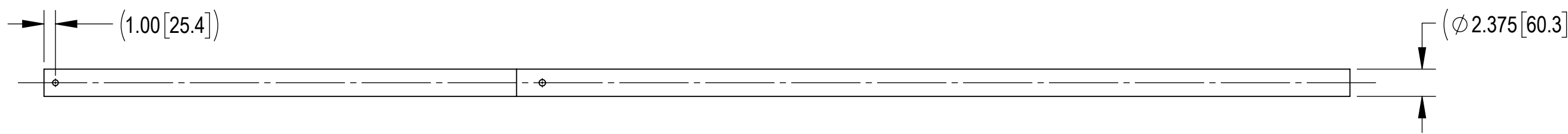
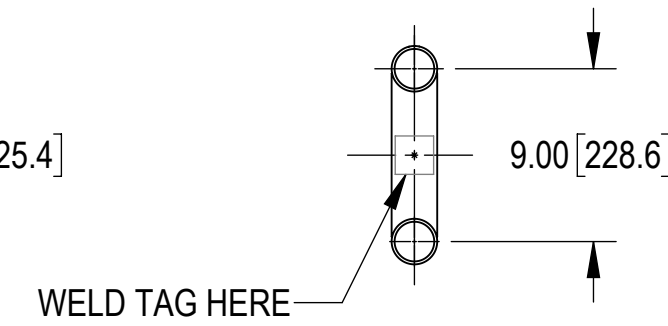
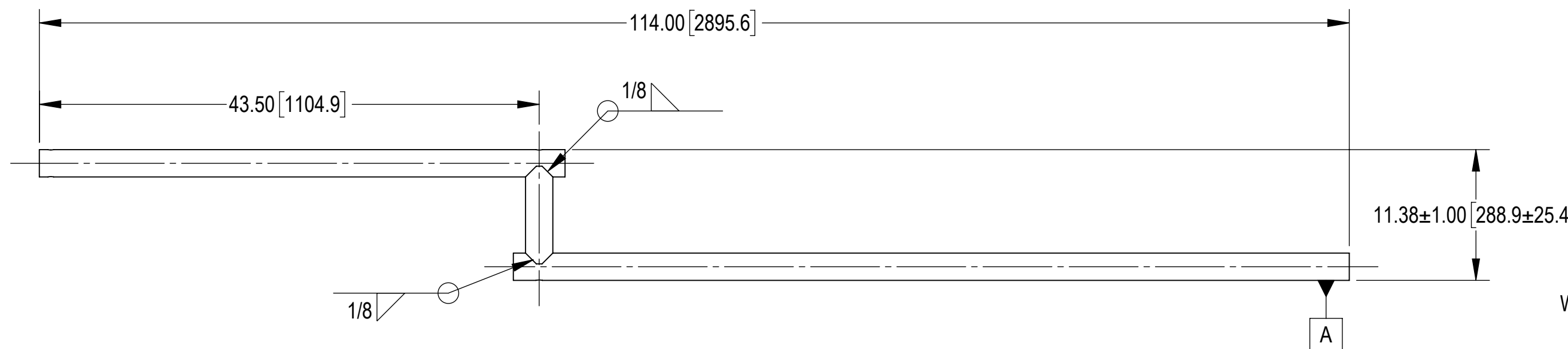
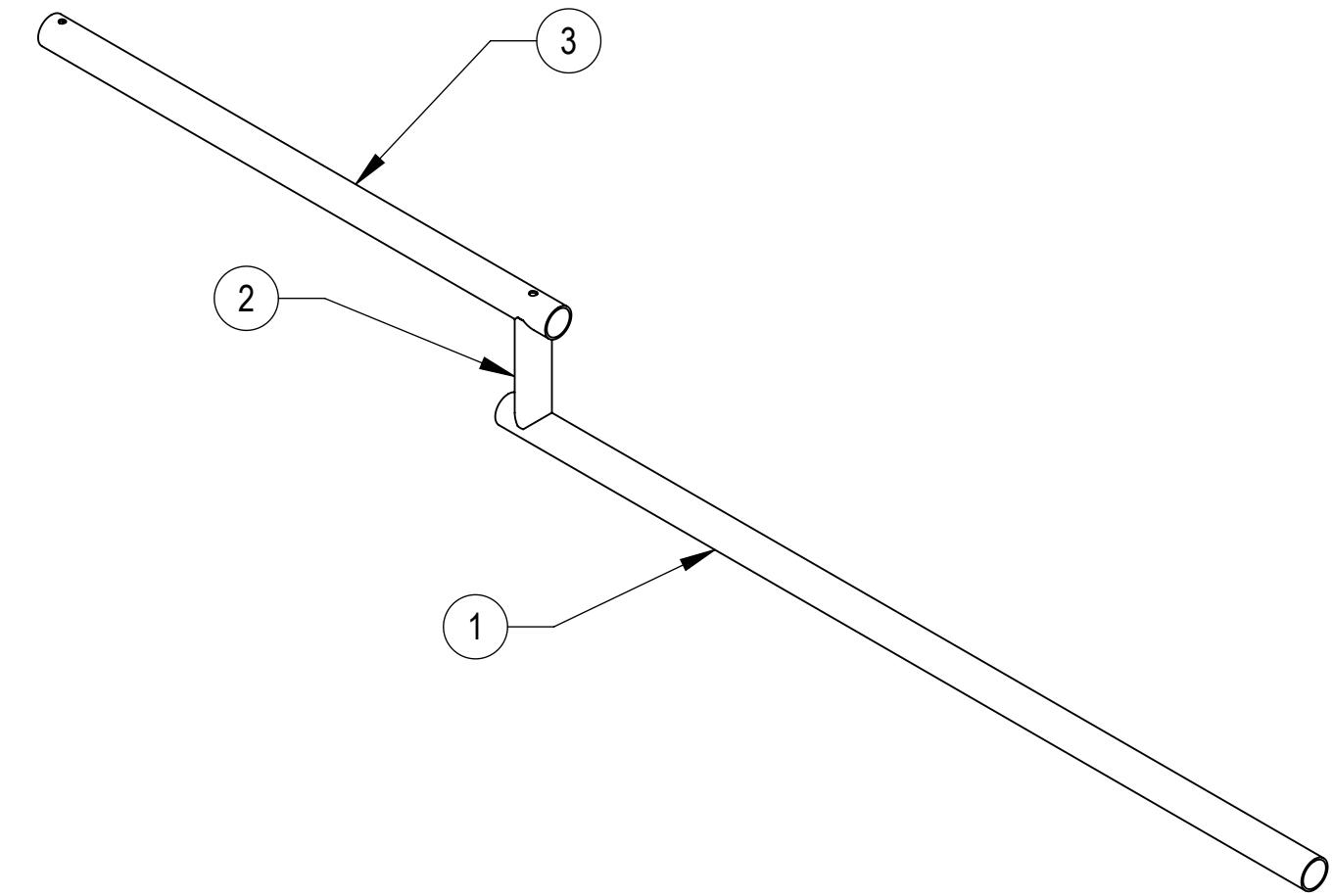
3

2

1

- 1.0 GENERAL NOTES
  - 1.1 ALL METRIC DIMENSIONS ARE IN BRACKETS [X.X]
  - 1.2 FEATURES CRITICAL TO QUALITY ARE INDICATED IN ROUNDED BOX (XX)
  - 1.3 3D DIGITAL FILES ARE FOR REFERENCE. IN CASE OF CONFLICT FOLLOW PDF DRAWING
  - 1.4 WELD AREAS NOTED ARE CRITICAL TO QUALITY
- 2.0 DESIGN NOTES
- 3.0 MANUFACTURING/SPECIAL REQUIREMENTS
  - 3.1 BREAK SHARP EDGES AND DEBURR PART FOR SAFE HANDLING
  - 3.2 WELDING:
    - 3.2.A ALL WELDING SHALL CONFORM TO AWS D1.1, STEEL STRUCTURAL WELDING CODE
    - 3.2.B WELDING WORKMANSHIP SHALL BE PER AWS D1.1, TABLE 8.1 (VISUAL INSPECTION)
    - 3.2.C ALL WELDING SHALL BE PREFORMED BY CERTIFIED WELDERS
    - 3.2.D ALL WELD SLAG, SPATTER AND SHARP SHALL BE REMOVED PRIOR TO FINISH
    - 3.2.E WELDER ID TAG SHALL BE LOCATED APPROXIMATELY WHERE SHOWN FOR MANUFACTURER & WELDER TRACEABILITY. TAG SHALL HAVE MANUFACTURE ID (XXX) FOR VENDOR SUPPLIED AND WELDER ID (XXX) FOR COMMSCOPE/VENDOR WELDER. TAG CAN BE UP TO 1/8" THICK & UP TO 2" SQUARE WITH STAMPED/ENGRAVED TEXT NO LESS THAN 1/4" IN HEIGHT
  - 3.3 GALVANIZE PER ASTM A123
  - 3.4 MARK WITH PART NUMBER, REVISION, AND VENDOR ID WITH ETCH, STAMP OR LABEL. CHARACTERS TO BE 0.12" TO 0.24" HIGH AND LEGIBLE TO THE UNAIDED EYE.
- 4.0 TEST
- 5.0 PACKAGING
  - 5.1 PACKAGING SHALL MEET COMMSCOPE REQUIREMENTS PER DOCUMENT IS-PL-3005

| REVISIONS |                 |                   |                       |
|-----------|-----------------|-------------------|-----------------------|
| REV.      | DESCRIPTION     | DATE              | APPROVED              |
| A         | INITIAL RELEASE | LL1090<br>26SEP23 | YZ1080<br>40179492CMO |



| MID                | FINISH    |
|--------------------|-----------|
| 74916-1-001-114    | GALV A123 |
| 74916-1-001-114-BR | N/A       |

**COMMSCOPE, INC. OF NORTH CAROLINA**

|                            |                              |                     |  |
|----------------------------|------------------------------|---------------------|--|
| TOLERANCES                 |                              | SAP MATERIAL MASTER |  |
| 1 PLACE .X[X] ± 0.2[6.3]   | 3 PLACE .XXX[X] ± 0.060[1.5] | <b>SEE TABLE</b>    |  |
| 2 PLACE .XX[X] ± 0.12[3.0] | ANGLES ± 2°                  |                     |  |
| FINISH<br>SEE TABLE        |                              | MATERIAL            |  |

| REV. | NAME        | DATE       | TITLE                              |
|------|-------------|------------|------------------------------------|
| CE   | LL1090      | 26SEP23    | <b>MOSAIC-MOUNT, 2-3/8" X 114"</b> |
| RW   | LL1090      | 09/27/2023 |                                    |
| AD   | YZ1080      | 09/28/2023 |                                    |
| RE   | YMENG       | 10/06/2023 |                                    |
| ECN  | 40179492CMO |            |                                    |

|            |                        |
|------------|------------------------|
| SCALE      | DOCUMENT NO.           |
| <b>1:2</b> | <b>74916-1-001-114</b> |

| SIZE     | Auth Group | INSL | MODEL   |        |          | DRAWING |        |          | SHEET  |
|----------|------------|------|---------|--------|----------|---------|--------|----------|--------|
| <b>C</b> | ⊕          | ◁    | VERSION | STATUS | REVISION | VERSION | STATUS | REVISION | 1 OF 1 |
|          |            |      | 00      | RE     | A        | 00      | RE     | A        |        |

|              |         |                     |
|--------------|---------|---------------------|
| DENSITY      |         | lbs/in <sup>3</sup> |
| MASS         | 38.38   | lbs                 |
| VOLUME       | 134.97  | in <sup>3</sup>     |
| SURFACE AREA | 1762.37 | in <sup>2</sup>     |
| HEIGHT       | 2.375"  |                     |
| LENGTH       | 114.00" |                     |
| WIDTH        | 11.38"  |                     |