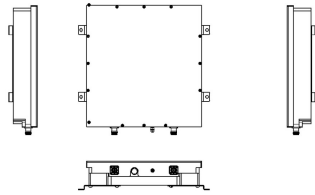


# 7843675-00



## Double Notch Filter for 900 MHz UL Protection

### Product Classification

**Product Type** Filter

### General Specifications

**Color** Grey (RAL 7047, Telegrau)

**RF Connector Interface** 4.3-10 Female

**RF Inputs, quantity** 1

**RF Outputs, quantity** 1

### Dimensions

**Height** 79 mm | 3.11 in

**Width** 433 mm | 17.047 in

**Depth** 425 mm | 16.732 in

### Electrical Specifications

**Return Loss, minimum** 18 dB

**Impedance** 50 ohm

### Electrical Specifications, Band Pass

Frequency Range, MHz	825–827	827–843	843–845	870–872	872–888	888–889.7
Insertion Loss, maximum, dB	1.3		1.3	1.8		1.8
Insertion Loss, typical, dB		0.7			0.7	

### Electrical Specifications, Band Reject

**Frequency Range, MHz** 891.6–896

**Attenuation, minimum, dB** 83

### Environmental Specifications

**Operating Temperature** -10 °C to +50 °C (+14 °F to +122 °F)

# 7843675-00

---

**Relative Humidity** Up to 93%, non-condensing

**Ingress Protection Test Method** IEC 60529:2001, IP67

## Packaging and Weights

**Weight, without mounting hardware** 19 kg | 41.888 lb

## Regulatory Compliance/Certifications

Agency	Classification
CHINA-ROHS	Above maximum concentration value
ROHS	Compliant/Exempted
UK-ROHS	Compliant/Exempted

