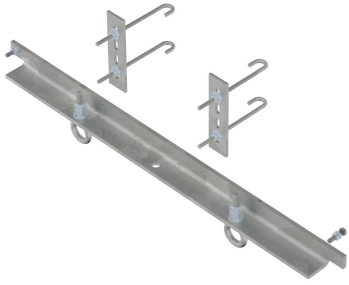


860674608-U | GRIP ANCHOR,CABLE LADDER,40", UNIVERSAL



Heavy Duty Cable Ladder Cross Member with Cable Attachment Points

-Product is designed to be field installed as needed on cable ladders to allow for the attachment of cables. Replaces a current rung on the cable ladder. Additional units can be installed along the cable ladder as needed to support additional cables.

-Purpose built cable ladder rung that is designed to support 1000 pounds of cable per eye or up to 1000 pounds in combination. Ideal for Hybrid cable. Includes mounting eye bolt for attachment.

Installs on the below cable ladders up to 40" wide

- Not to be used for hoisting.
- Competent person to make determination of usage on the structure.
- Competent person to field cut to length as needed. Apply cold galv to cut ends.

Product Classification

Portfolio	CommScope®
Product Type	Hoisting Grip Anchor
Ordering Note	CommScope® standard product with terms
Warranty	One year

General Specifications

Cable Runs, quantity	3
Mounting	Cable ladder

Dimensions

Width	1,016 mm 40 in
--------------	------------------

Material Specifications

Material Type	Hot dip galvanized steel
----------------------	--------------------------

Packaging and Weights

Included	Attachment kits
Packaging quantity	1

860674608-U | GRIP ANCHOR,CABLE LADDER,40", UNIVERSAL

Regulatory Compliance/Certifications

Agency	Classification
CHINA-ROHS	Above maximum concentration value
ROHS	Compliant/Exempted
UK-ROHS	Compliant/Exempted



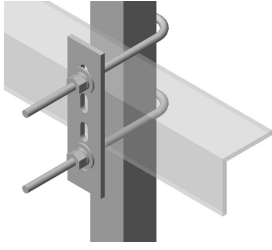
Included Products

HK-CL-U	- Universal Cable Ladder Hardware Kit for 1 in to 4-1/2 in round or angle members
---------	---

* Footnotes

Warranty	For more information, please consult our Product Warranty guidelines
-----------------	--

HK-CL-U



Universal Cable Ladder Hardware Kit for 1 in to 4-1/2 in round or angle members

Product Classification

Portfolio	CommScope®
Product Type	Ladder kit
Ordering Note	CommScope® standard product (Global)

General Specifications

Cable Runs, quantity	0
Mounting	Round and angle legs

Dimensions

Height	203.2 mm 8 in
Width	127 mm 5 in
Length	203.2 mm 8 in
Mounting Diameter, maximum	114.3 mm 4.5 in
Mounting Diameter, minimum	25.4 mm 1 in

Material Specifications

Material Type	Hot dip galvanized steel
----------------------	--------------------------

Packaging and Weights

Included	J-bolts Plates
Packaging quantity	1
Weight, net	1.7 kg 3.748 lb

Regulatory Compliance/Certifications

Agency	Classification
CHINA-ROHS	Above maximum concentration value
ISO 9001:2015	Designed, manufactured and/or distributed under this quality management system

HK-CL-U

ROHS Compliant/Exempted

UK-ROHS Compliant/Exempted

