

# Etisalat Egypt establishes high-density connectivity

Etisalat Misr S.A.E. (Etisalat Egypt) is a subsidiary of Etisalat Group, which started its operations in 1976 and quickly expanded to operate in 16 countries across Africa, the Middle East and Asia. Its mobile services was the first to provide 3.5G network connectivity in its market, and the first to support the migration to 4G/LTE.



## Customer

Etisalat Misr S.A.E. (Etisalat Egypt)

## Location

16 countries across Africa, the Middle East and Asia

Etisalat Egypt continues to expand and evolve its network throughout Egypt. When the time came to increase capacity for deployments at one of Egypt's top four universities in Cairo, they needed a smart, flexible way to keep ahead of high demand during peak hours.

Etisalat Egypt chose CommScope's five-beam antenna solution to enhance the capacity of existing macro sites on towers and rooftops around the campus. The five-

beam antenna solution represents a quick, economical way to deploy additional capacity to macro sites or even to cell on wheels (COW) deployments, which are semi-permanent, truck-based cellular sites serving remote or difficult-to-service areas as needed.

Because CommScope's five-beam antenna solution does the work of five ordinary antennas, the success of this deployment was so significant that Etisalat Egypt is expanding the use of the five-beam

solution across all high-traffic sites in Egypt.

## Requirements

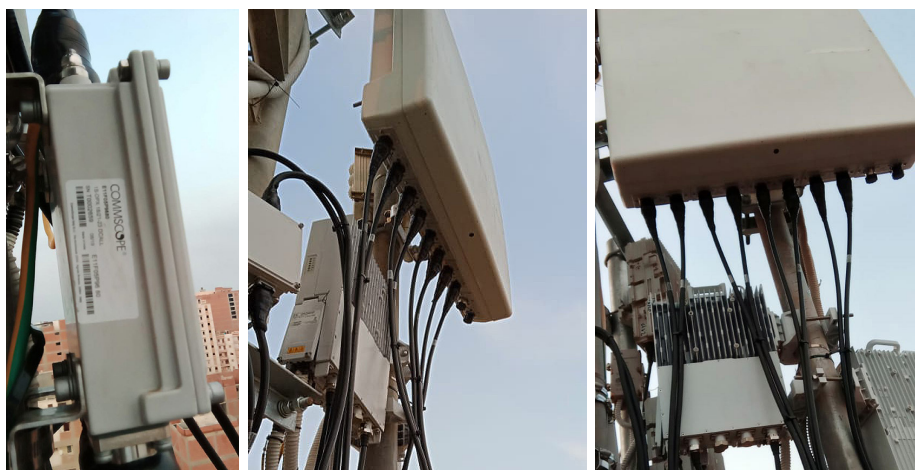
- Ultra-high capacity for high-traffic areas and special events with variable demand
- Simple, economical deployment, including COW deployment
- Beamforming technology to mitigate cross-sector interference
- Simplified site acquisition processes

## Solutions

- CommScope's 10-port five-beam antenna solution, with 10 jumper connectors for each antenna
- Multiple deployments on the serving macro sites covering the entire campus from the outside

## Benefits

- Five beams per sector enhanced network capacity
- Reduced antenna count reduced CapEx and OpEx
- Improved spectrum use increased per-site revenue
- Slim form factor reduced lease costs and zoning challenges, making it easier to acquire new sites



“CommScope’s five-beam BSA solution demonstrated that they really understood our challenge in this deployment, not only in terms of capacity and performance, but also in the matter of streamlining site acquisitions. The results are such that this technology will play an important role in future network deployments across our markets.”

**Ahmed Ezz Elarab**

Radio Optimization Senior Principal Engineer  
Etisalat Egypt

CommScope pushes the boundaries of communications technology with game-changing ideas and ground-breaking discoveries that spark profound human achievement. We collaborate with our customers and partners to design, create and build the world’s most advanced networks. It is our passion and commitment to identify the next opportunity and realize a better tomorrow. Discover more at [commscope.com](https://commscope.com)

**COMMSCOPE®**

[commscope.com](https://commscope.com)

Visit our website or contact your local CommScope representative for more information.

© 2022 CommScope, Inc. All rights reserved.

All trademarks identified by ™ or © are trademarks or registered trademarks in the US and may be registered in other countries. All product names, trademarks and registered trademarks are property of their respective owners. This document is for planning purposes only and is not intended to modify or supplement any specifications or warranties relating to CommScope products or services.

CS-115693-EN (08/22)