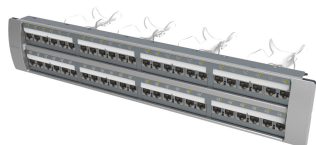


# 760201186 | 360-iP-MFTP-E-HD6B-2U-48



SYSTIMAX 360™ iPatch® Evolve High Density F/UTP Modular Panel, 48 port

## Product Classification

### Regional Availability

Asia | Australia/New Zealand | EMEA | Latin America | North America

### Portfolio

SYSTIMAX®

### Product Type

RJ45 patch panel

### Product Brand

SYSTIMAX 360™ | iPatch®

## General Specifications

### ANSI/TIA Category

6A

### Cable Type

Shielded

### Color

Silver

### Intelligence Type

iPatch® enabled

### Panel Style

Straight

### Rack Units

2

### Total Ports, quantity

48

### Wiring

T568A | T568B

## Dimensions

### Height

89.66 mm | 3.53 in

### Width

482.6 mm | 19 in

### Depth

206.5 mm | 8.13 in

### Compatible Diameter Over Dielectric, maximum

1.168 mm | 0.046 in

## Electrical Specifications

### Current Rating at Temperature

1.5 A @ 20 °C | 1.5 A @ 68 °F

### Dielectric Withstand Voltage, RMS, conductive surface

1,500 Vac @ 60 Hz

### Insulation Resistance, minimum

500 MOhm

## Mechanical Specifications

**Plug Insertion Life, minimum** 750 times

## Environmental Specifications

**Operating Temperature** -10 °C to +60 °C (+14 °F to +140 °F)

**Storage Temperature** -40 °C to +70 °C (-40 °F to +158 °F)

**Safety Standard** UL | cUL

## Packaging and Weights

**Packaging quantity** 1

## Regulatory Compliance/Certifications

| Agency        | Classification   |
|---------------|--|
| CHINA-ROHS    | Above maximum concentration value  |
| ISO 9001:2015 | Designed, manufactured and/or distributed under this quality management system |
| ROHS          | Compliant/Exempted   |
| UK-ROHS       | Compliant/Exempted   |

