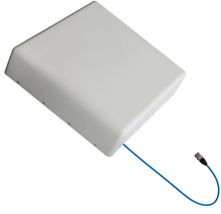


CMAX-D-TCPUSEI53



Low PIM Directional In-building Antenna, 350-470 MHz, 617-960 MHz, 1710-2700 MHz

Product Classification

Product Type In-building antenna

General Specifications

Application Indoor
Antenna Type Directional
Antenna Array Characteristic SISO
Polarization Vertical
Color White (RAL 9016)
Mounting Poles between 30-55 mm with supplied clamps
Number of Ports 1
Pigtail Cable 670-141SXE, plenum rated
Radome Material Fiberglass, UV resistant
RF Connector Interface N Female

Dimensions

Width 330 mm | 12.992 in
Depth 90 mm | 3.543 in
Length 330 mm | 12.992 in
Pigtail Length 500 mm | 19.685 in

Electrical Specifications

Impedance 50 ohm
Operating Frequency Band 1710 - 2700 MHz | 350 - 470 MHz | 617 - 806 MHz | 806 - 960 MHz
Electrical Note Values typical, unless otherwise stated

Electrical Specifications

| Frequency Band, MHz | 350-470 | 617-698 | 698-960 | 1710-2700 |
|---------------------|---------|---------|---------|-----------|
|---------------------|---------|---------|---------|-----------|

CMAX-D-TCPUSEI53

| | | | | |
|---|----------|----------|----------|----------|
| Gain, dBi | 5.2 | 7 | 7 | 9 |
| Beamwidth, Horizontal, degrees | 98 | 70 | 72 | 45 |
| Beamwidth, Vertical, degrees | 62 | 54 | 45 | 53 |
| VSWR Return loss, dB | 1.8 10.9 | 1.8 10.9 | 1.8 10.9 | 1.8 10.9 |
| PIM, 3rd Order, 2 x 20 W, dBc | -153 | -153 | -153 | -153 |
| Input Power per Port, maximum, watts | 100 | 100 | 100 | 100 |

Environmental Specifications

| | |
|------------------------------|--------------------------------------|
| Operating Temperature | -40 °C to +60 °C (-40 °F to +140 °F) |
| Relative Humidity | Up to 100% |

Packaging and Weights

| | |
|---------------------------|--------------------|
| Width, packed | 370 mm 14.567 in |
| Depth, packed | 170 mm 6.693 in |
| Length, packed | 470 mm 18.504 in |
| Packaging quantity | 1 |
| Weight, gross | 3 kg 6.614 lb |
| Weight, net | 1.9 kg 4.189 lb |

Regulatory Compliance/Certifications

| Agency | Classification |
|---------------|--|
| CHINA-ROHS | Below maximum concentration value |
| ISO 9001:2015 | Designed, manufactured and/or distributed under this quality management system |
| ROHS | Compliant |
| UK-ROHS | Compliant |

