

2P-2L-C1



2-port sector antenna, 2x 694–960 MHz, 65° HPBW, 1x RET

- Utilizes RET-PMOD-A20-1A01

General Specifications

Antenna Type	Sector
Band	Single band
Grounding Type	RF connector body grounded to reflector and mounting bracket
Performance Note	Outdoor usage
Radome Material	Fiberglass, UV resistant
Radiator Material	Low loss circuit board
Reflector Material	Aluminum
RF Connector Interface	4.3-10 Female
RF Connector Location	Bottom
RF Connector Quantity, low band	2
RF Connector Quantity, total	2

Remote Electrical Tilt (RET) Information

RET Hardware	CommRET v2
RET Interface	2x 8 pin connector as per IEC 60130-9 Daisy chain in: Male / Daisy chain out: Female Pin3: RS485A(AISG_B), Pin5: RS485B(AISG_A), Pin6: DC 10~30V, Pin7: DC_ Return
RET Interface, quantity	1 female 1 male
Input Voltage	10–30 Vdc
Internal RET	Low band (1)
Power Consumption, idle state, maximum	2 W
Power Consumption, normal conditions, maximum	10 W
Protocol	3GPP/AISG 2.0 (Single RET)

Dimensions

Width	320 mm 12.598 in
Depth	140 mm 5.512 in

2P-2L-C1

Length 2500 mm | 98.425 in
Net Weight, without mounting kit 21 kg | 46.297 lb

Port Configuration



Electrical Specifications

Impedance 50 ohm
Operating Frequency Band 694 – 960 MHz
Polarization $\pm 45^\circ$
Total Input Power, maximum 500 W

Electrical Specifications

Frequency Band, MHz	694–790	790–890	890–960
Gain, dBi	16.8	17.4	17.8
Beamwidth, Horizontal, degrees	69	66	63
Beamwidth, Vertical, degrees	8.9	7.8	7.2
Beam Tilt, degrees	3–12	3–12	3–12
USLS (First Lobe), dB	17	20	18
Front-to-Back Ratio, Copolarization $180^\circ \pm 30^\circ$, dB	31	33	31
Isolation, Cross Polarization, dB	28	28	28

2P-2L-C1

VSWR Return loss, dB	1.5 14.0	1.5 14.0	1.5 14.0
PIM, 3rd Order, 2 x 20 W, dBc	-153	-153	-153
Input Power per Port, maximum, watts	300	300	300

Electrical Specifications, BASTA

Frequency Band, MHz	694–790	790–890	890–960
Gain by all Beam Tilts, average, dBi	16.5	17.2	17.6
Gain by all Beam Tilts Tolerance, dB	±0.6	±0.4	±0.2
Beamwidth, Horizontal Tolerance, degrees	±2	±1.7	±1.3
Beamwidth, Vertical Tolerance, degrees	±0.6	±0.5	±0.3
USLS, beampeak to 20° above beampeak, dB	16	14	15
Front-to-Back Total Power at 180° ± 30°, dB	25	27	27
CPR at Boresight, dB	23	23	30
CPR at Sector, dB	14	8	12

Mechanical Specifications

Mechanical Tilt Range	0°–10°
Wind Loading @ Velocity, frontal	418.0 N @ 150 km/h (94.0 lbf @ 150 km/h)
Wind Loading @ Velocity, lateral	378.0 N @ 150 km/h (85.0 lbf @ 150 km/h)
Wind Loading @ Velocity, rear	915.0 N @ 150 km/h (205.7 lbf @ 150 km/h)
Wind Speed, maximum	241 km/h (150 mph)

Packaging and Weights

Width, packed	425 mm 16.732 in
Depth, packed	235 mm 9.252 in
Length, packed	2780 mm 109.449 in
Weight, gross	30.6 kg 67.461 lb

Regulatory Compliance/Certifications

Agency	Classification
CHINA-ROHS	Below maximum concentration value
ISO 9001:2015	Designed, manufactured and/or distributed under this quality management system
ROHS	Compliant
UK-ROHS	Compliant



2P-2L-C1

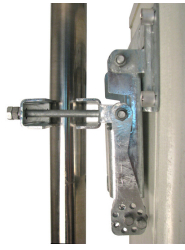
Included Products

- BSAMNT-B95-01 – Wide Profile Antenna Downtilt Mounting Kit for 2.4 - 4.5 in (60 - 115 mm) OD round members. Kit contains one scissor top bracket set and one bottom bracket set.

* Footnotes

Performance Note Severe environmental conditions may degrade optimum performance

BSAMNT-B95-01



Wide Profile Antenna Downtilt Mounting Kit for 2.4 - 4.5 in (60 - 115 mm) OD round members. Kit contains one scissor top bracket set and one bottom bracket set.

Product Classification

Product Type Downtilt mounting kit

General Specifications

Application Outdoor

Color Silver

Dimensions

Compatible Diameter, maximum 115 mm | 4.528 in

Compatible Diameter, minimum 61 mm | 2.402 in

Material Specifications

Material Type Galvanized steel

Packaging and Weights

Included Brackets | Hardware

Packaging quantity 2

Weight, gross 3.6 kg | 7.937 lb

Regulatory Compliance/Certifications

Agency

CE
ISO 9001:2015

Classification

Compliant with the relevant CE product directives
Designed, manufactured and/or distributed under this quality management system

