

639538 Revision F, May 2016

ATC200-LITE-USB RET Control System
Equipment Installation Overview



WARRANTY NOTICE

Proper installation procedures must be followed when installing and operating RET equipment. Failure to assure installations are done properly by trained installation personnel and to follow procedures discussed in this bulletin may cause warranty for such products to be void.

CommScope requires that all RET installations be pre-tested and configured prior to installation. Failure to conduct pre-test and pre-installation procedures defined by CommScope will void warranty.

SAFETY NOTICE

The installation, maintenance, or removal of an antenna requires qualified, experienced personnel. CommScope installation instructions are written for such installation personnel. Antenna systems should be inspected once a year by qualified personnel to verify proper installation, maintenance, and condition of equipment.

CommScope disclaims any liability or responsibility for the results of improper or unsafe installation practices.

It is recommended that transmit power be turned off when the field installation is performed. Follow all applicable safety precautions as shown on this page.



Do not install near power lines. Power lines, telephone lines, and guy wires look the same. Assume any wire or line can electrocute you.



Do not install on a wet or windy day or when lightning or thunder is in the area. Do not use metal ladder.



Wear shoes with rubber soles and heels. Wear protective clothing including a long-sleeved shirt and rubber gloves.

1. Test system components before installation

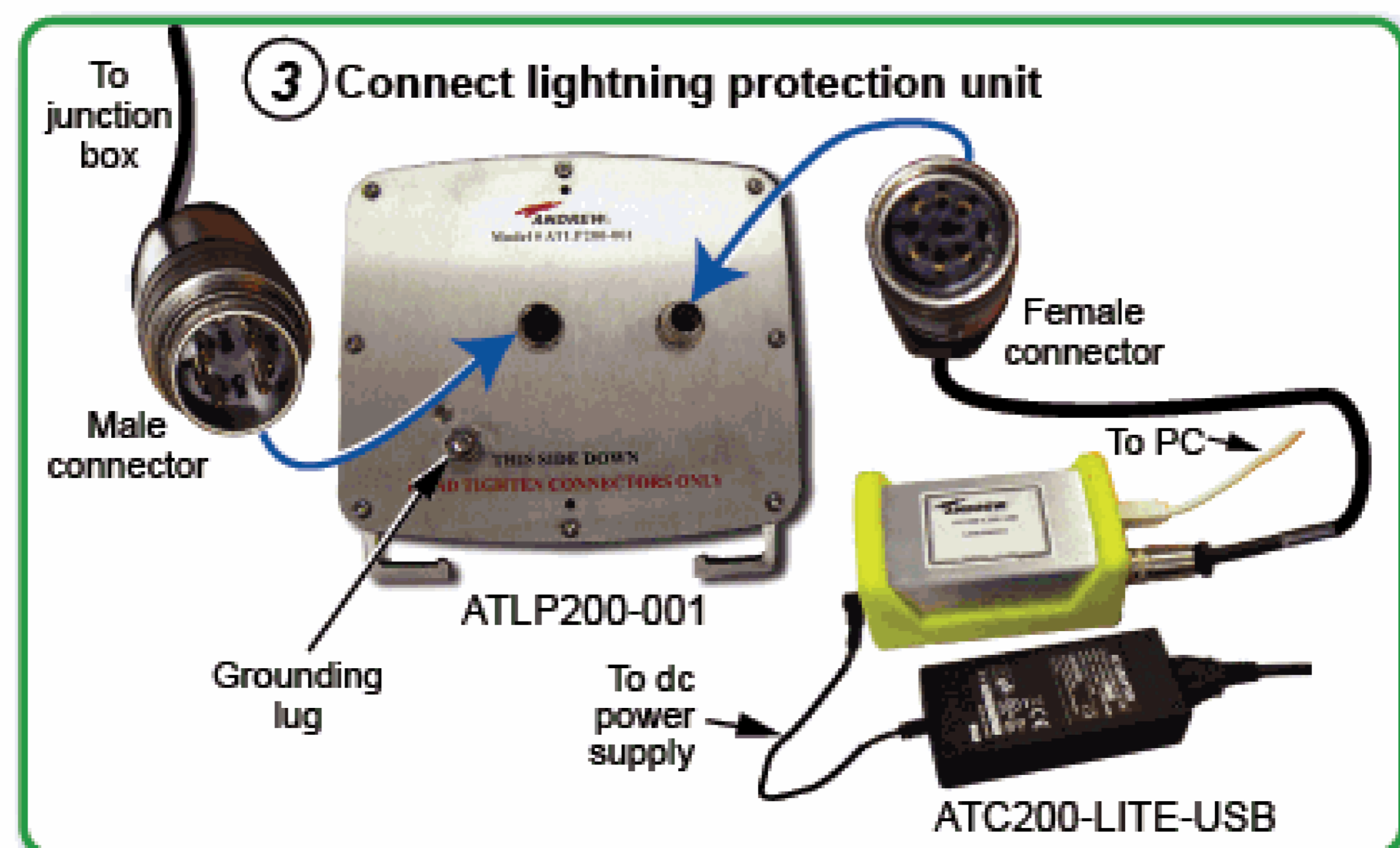
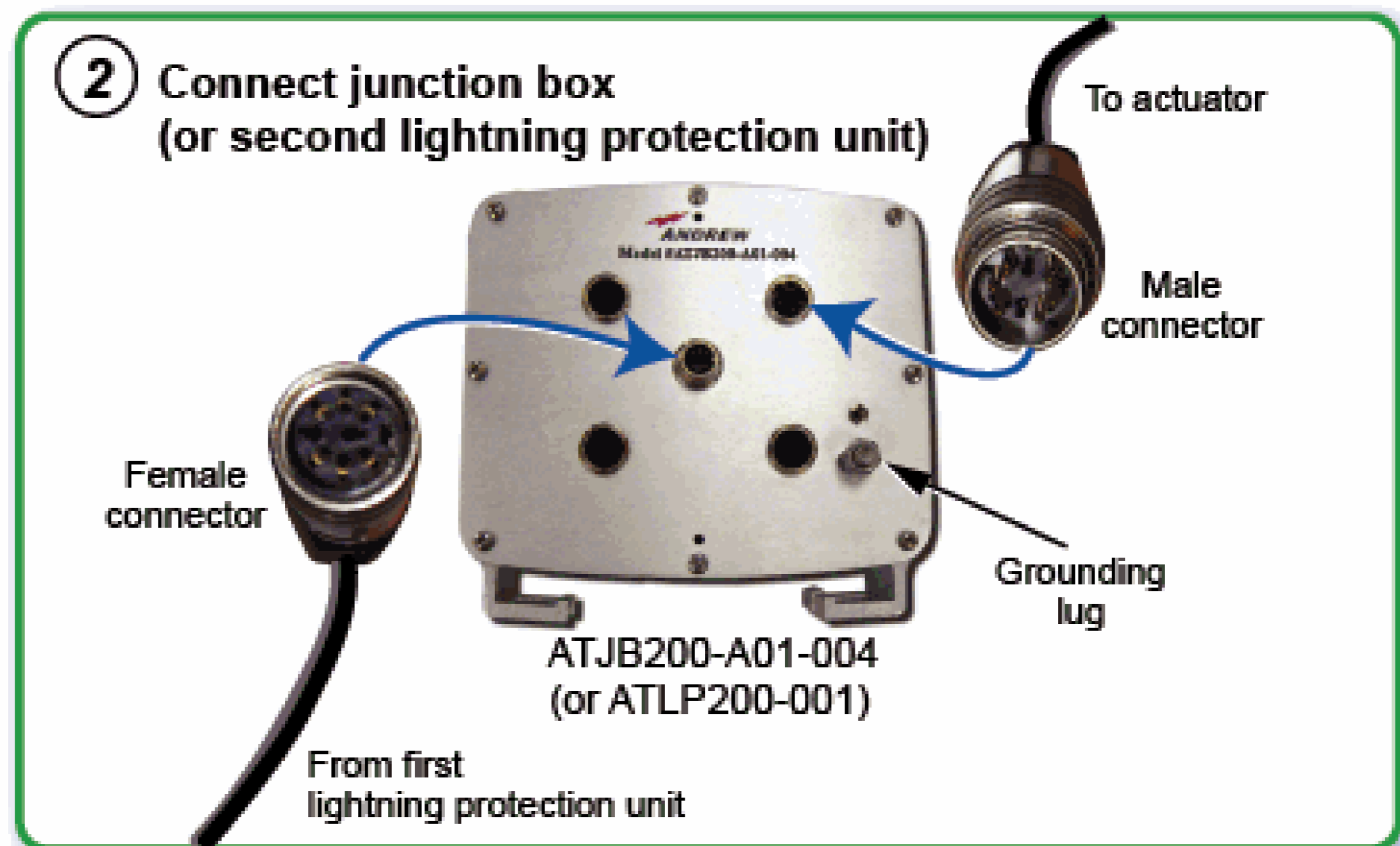
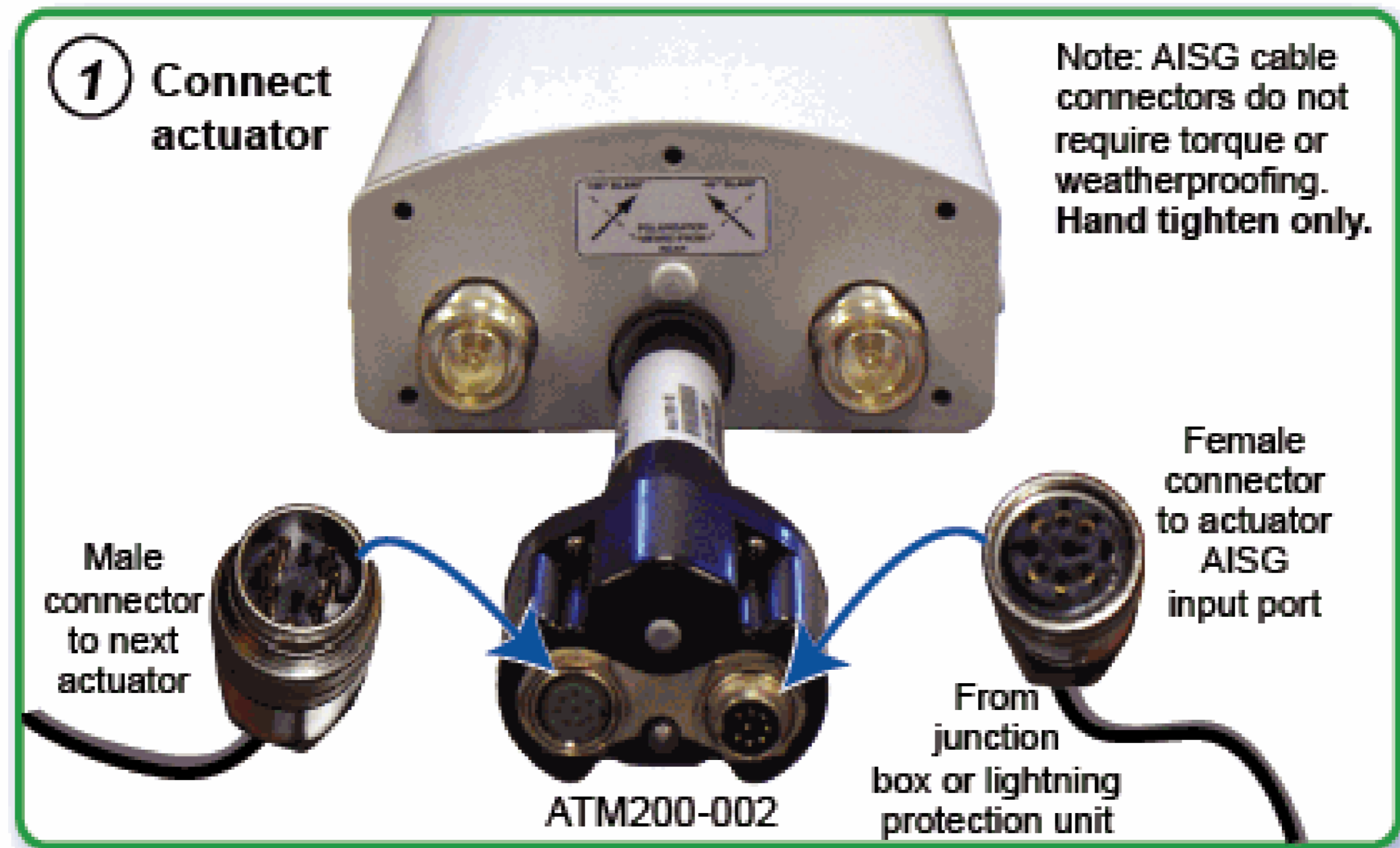


Figure 1. ATC200-LITE-USB Controller System Components Setup for Testing.

2. Tower installation

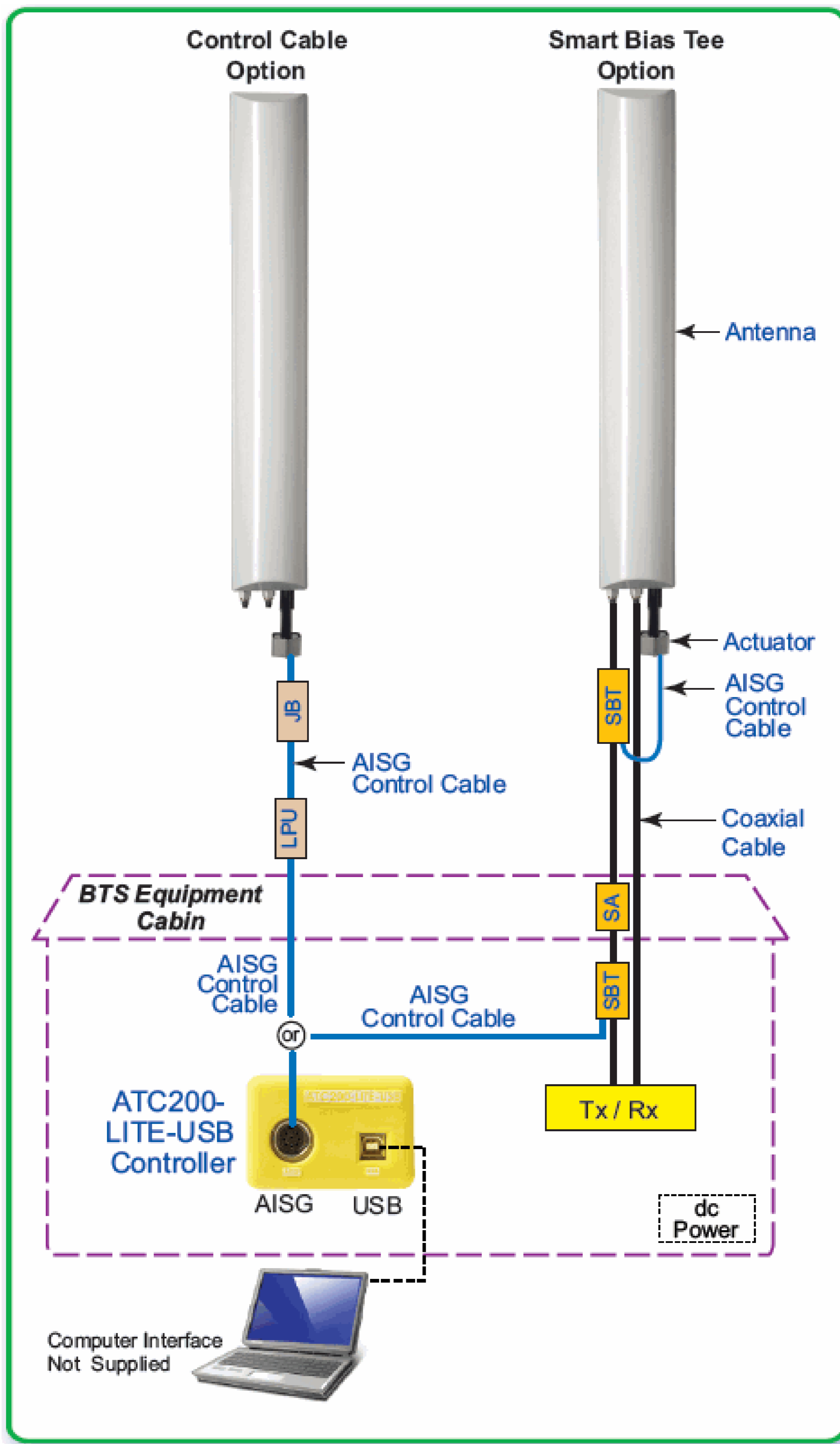


Figure 2. Installed ATC200-LITE-USB Controller System.

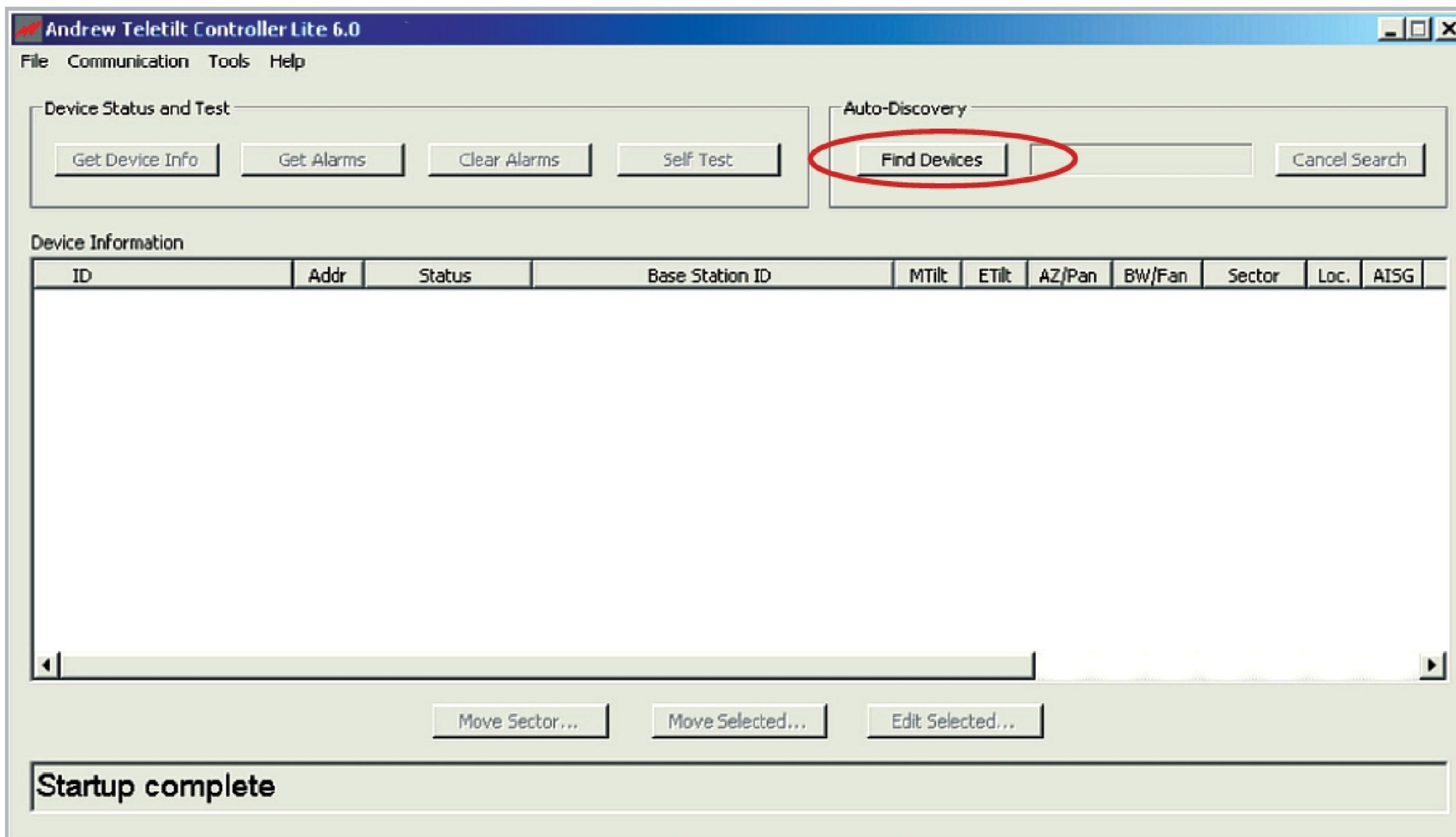
3. Controller program startup

1. Program startup.

- The CommScope website should be checked every 30 days for updated software, firmware, and documentation.
- Double-click on the ATC Lite program icon on the computer's desktop.
- The latest CommScope antenna definition file is automatically loaded by the controller during program startup. If an antenna is not listed when configuring (see Step 3B), select **Tools**→**Antenna Files...** from the program's main menu. Select the desired file from the drop down menu provided. (The antenna file revisions are in sequential order.) Click **Load File, Close**.
- If you would like to verify the port assigned for the connection or change the com port, click on **Communication** from the main menu.
- Note the program will only be able to perform self testing and RET operations when a RET device or system is connected into the controller's AISG port.

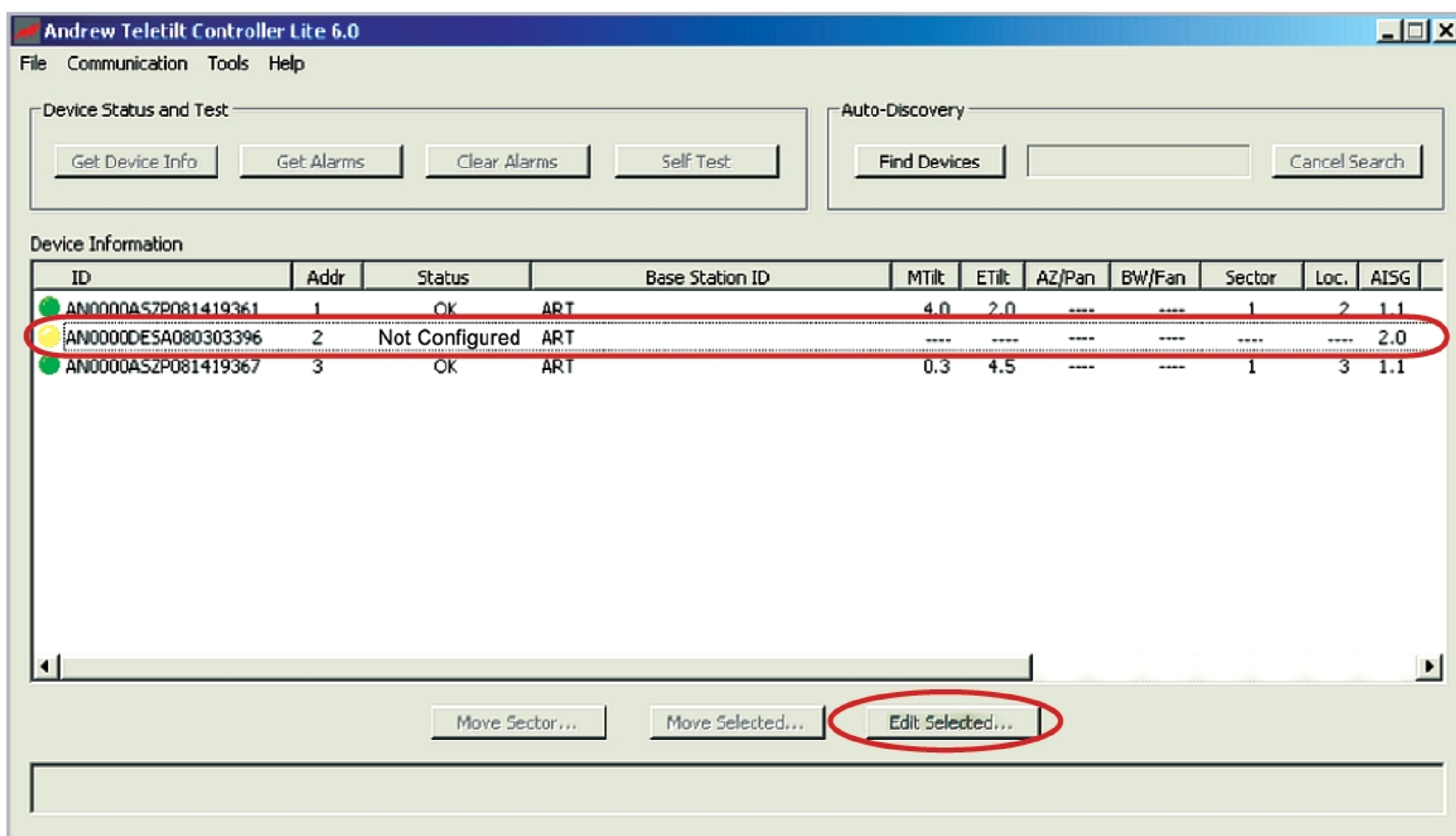
2. Device search. Click on **Find Devices**.

A device search is required each time the controller program is closed and reopened.



3a. Device configuration.

Select appropriate device to be configured and click on **Edit Selected**.



Actuators that have been factory installed on an antenna are pre-configured to include the antenna model number, antenna type, and antenna serial number. The remaining fields (Installation Date, Mechanical Tilt, Bearing, Height, Sector, Location, Freq. Band, Technology, Station ID, and Installer ID) will need to be configured, as seen on the following screen.

4. Device operation

- 3b. To configure the selected device, make appropriate selections and text entries on screen below. Configuration items marked with an asterisk are required; saving a new configuration will be disabled if any of these fields are blank. Click on **Configure**.

Configuring Device AN0000DESA080303396 at Address 2

* Antenna Model: TMBX-6516-R2M Installation Date: 10/15/08

Antenna Serial #: DESA080303396 Installer ID: LzF

Min. Electrical Tilt: 0.0 Max. Electrical Tilt: 10.0 Mechanical Tilt: 3.0

Oper. Band: VI : UL 830- 840, DL 875- 885 MHz Bearing: 2

Antenna Type: Dual Polarized Height: 0

Base Station ID: ART Technology: Voice/Data

* Sector ID: 1 * Location: 4

* Denotes a required field

Cancel **Configure**

- 4a. Device adjustments. Select tilt antenna actuator. Click **Move Selected** on screen below.

Andrew Teletilt Controller Lite 6.0

File Communication Tools Help

Device Status and Test: Get Device Info Get Alarms Clear Alarms Self Test

Auto-Discovery: Find Devices Cancel Search

Device Information

ID	Addr	Status	Base Station ID	MTilt	ETilt	AZ/Pan	BW/Fan	Sector	Loc.	AISG
AN0000ASZP081419361	1	OK	ART	4.0	2.0	----	----	1	2	1.1
AN0000DESA080303396	2	OK	ART	3.0	2.1	----	----	1	4	2.0
AN0000ASZP081419367	3	OK	ART	0.3	4.5	----	----	1	3	1.1

Move Sector... **Move Selected...** Edit Selected...

- 4b. Enter new tilt setting and click on **Activate** as shown on screen below.

Set Actuator Position, Device AN0000DESA080303396 at Address 2

Antenna Model: TMBX-6516-R2M Installation Date: 10/15/08

Min. Electrical Tilt: 0.0 Max. Electrical Tilt: 10.0 Mechanical Tilt: 3.0

Antenna Type: Dual Polarized Bearing: 2

Antenna Serial #: DESA080303396 Height: 0

Oper. Band: VI : UL 830- 840, DL 875- 885 MHz Technology: Voice/Data

Base Station ID: ART Installer ID: LzF

Sector: 1 Location: 4

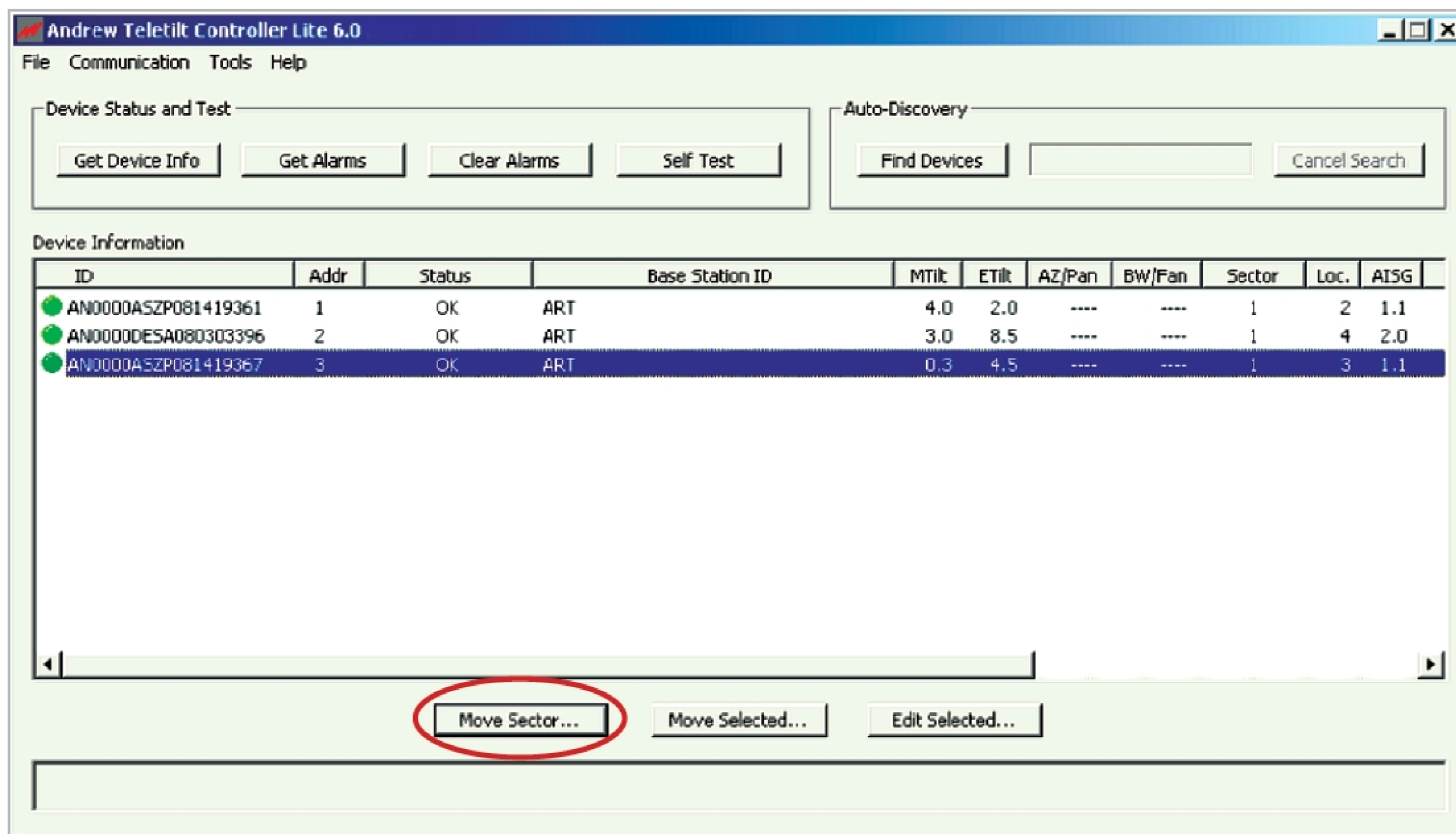
Set Position

Current Tilt: 2.1 **New Tilt: 8.5**

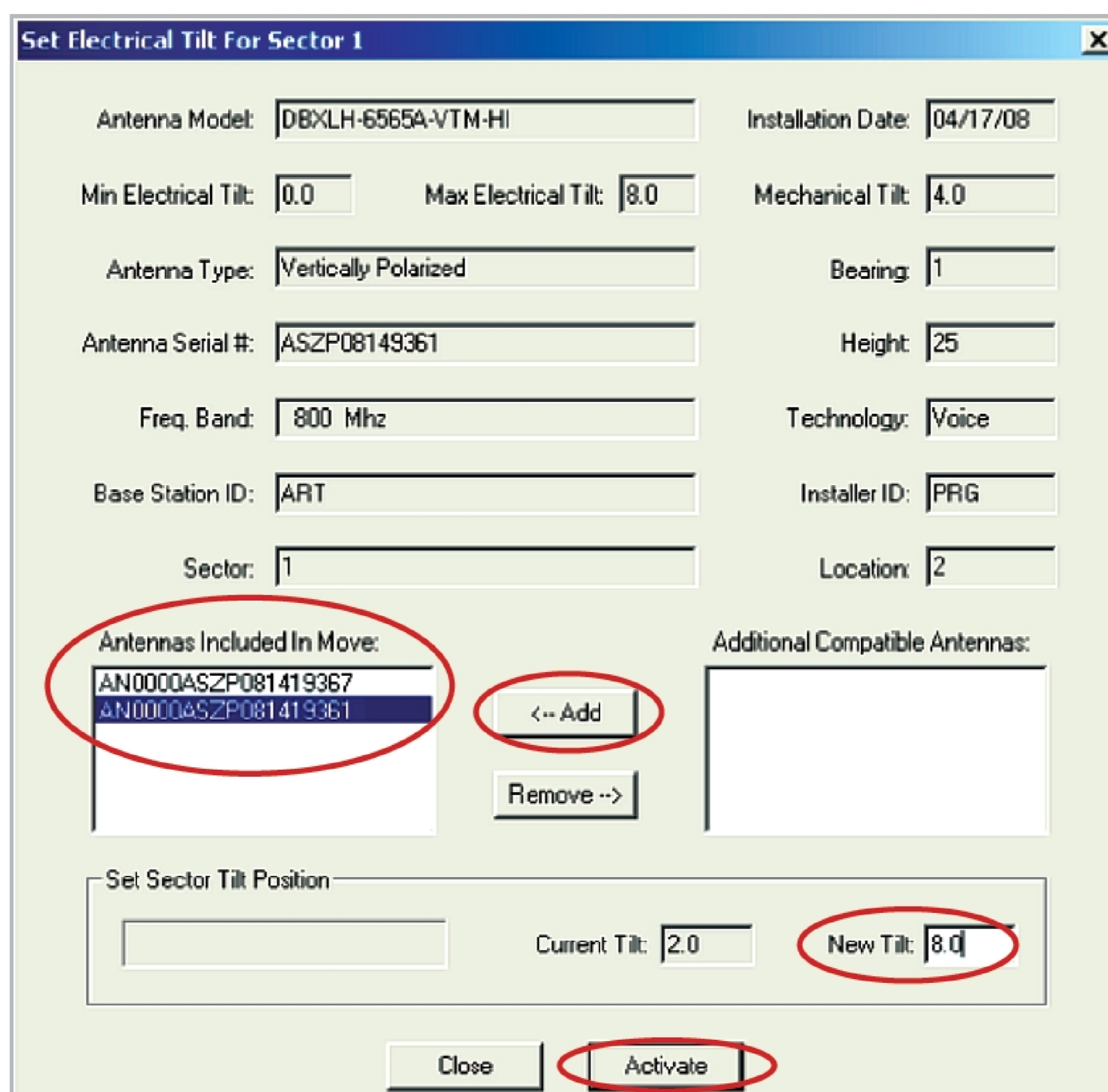
Close **Activate**

4c. Click **Move Sector** on Controller screen.

This adjustment occurs on the tilt actuator only. This setting is high- lighted on screen below.



4d. Add **Additional Compatible Antennas to Antennas Included in Move**. Enter **New Tilt** setting for group and click on **Activate**.



5. To save the site report formatted to open in Word or Excel, go to **File, Save Site Report** from the main menu.

- Assign a filename for the report.
- For Word format, select **Text Site Report File (*.txtprt)** from the **Save as type** drop down selection; or select **Tabbed Site Report File (*.tabprt)** for Excel compatible format.
- Click **Save**.
- Note: All site reports are saved to C:\ATCLite_Site_Files.

Note: See www.commscope.com for complete user guide, Bulletin 639536.