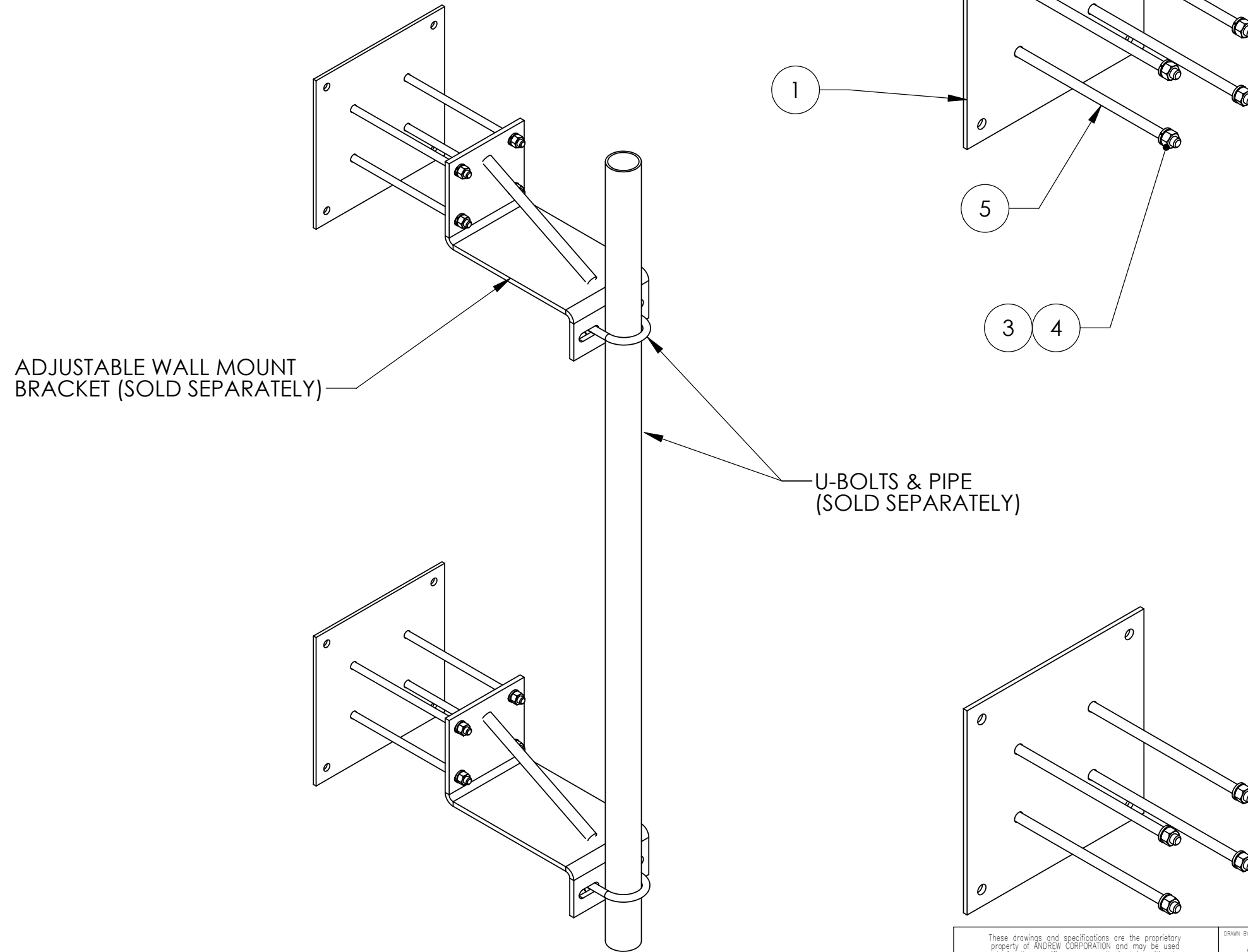



ITEM	PART NO.	DESCRIPTION	QTY.	WEIGHT
1	MT223.02	UNIVERSAL WALL MOUNT BACKING PLATE	2	10.00 LBS
2	MT223H	HARDWARE KIT (ITEMS 3-5)	1	
3	GWL-04	1/2" GALV LOCK WASHER	16	0.01 LBS
4	GN-04	1/2" GALV HEX NUT	16	0.04 LBS
5	MT-379	1/2" X 12" GALV. THREADED ROD	8	0.67 LBS

REVISIONS				
REV.	ZONE	DESCRIPTION	BY	DATE
A		INITIAL RELEASE	JTS	04/12/01
B		REVISED & REDRAWN	ACG	06/17/05
C		NEW ITEM #1	MSM	03/05/08



<small>These drawings and specifications are the proprietary property of ANDREW CORPORATION and may be used only for the specific purpose authorized in writing by Andrew Corporation.</small> <b>ALL DIMENSIONS ARE IN INCHES U.O.S.</b> <b>TOLERANCES UNLESS OTHERWISE SPECIFIED:</b> .X = ± .06      ANGLES      ±2° .XX = ± .03      FRACTIONS      ±1/32 .XXX = ± .010 REMOVE BURRS AND BREAK EDGES .005 <b>DO NOT SCALE THIS PRINT</b>	DRAWN BY: <b>ACG</b>	SHEET: 1 of 1	PART NUMBER: <b>MT-223</b>
	CHECKED BY: <b>TP</b>	SCALE: NTS	DESCRIPTION: <b>BACKING PLATE KIT</b>
	DATE: 06/17/05	MATERIAL: A36	DRAWING TYPE: ASSEMBLY DRAWING
	REVISION: <b>C</b>	FINISH: GALV A123	 ORLAND PARK, IL. 60462 U.S.A.
	WEIGHT: 80.08 LBS		