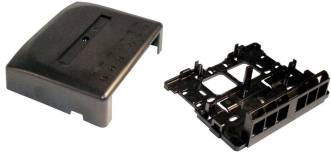


## Surface Mount Module, 6 port, black



### Product Classification

<b>Regional Availability</b>	Australia/New Zealand   EMEA
<b>Portfolio</b>	NETCONNECT®
<b>Product Type</b>	Surface mount module
<b>Product Series</b>	SL Series   SLX Series

### General Specifications

<b>Application</b>	Used with SL Series outlets
<b>Color</b>	Black
<b>Mounting</b>	Surface
<b>Outlet Orientation</b>	Flat
<b>Port Marking Type</b>	Label
<b>Total Ports, quantity</b>	6

### Material Specifications

<b>Material Type</b>	Polycarbonate
----------------------	---------------

### Packaging and Weights

<b>Packaging quantity</b>	1
---------------------------	---

### Regulatory Compliance/Certifications

<b>Agency</b>	<b>Classification</b>
CHINA-ROHS	Below maximum concentration value
REACH-SVHC	Compliant as per SVHC revision on <a href="http://www.commscope.com/ProductCompliance">www.commscope.com/ProductCompliance</a>
ROHS	Compliant

