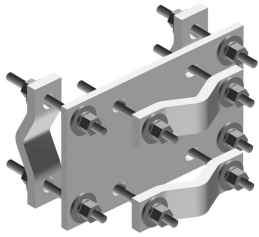


CO-100



Crossover Plate, joins 1-1/2 in to 3-1/2 in OD round members

Product Classification

Product Type Clamp plate

General Specifications

Mounting Crossover plate

Tower Taper Non-tapered

Dimensions

Height 203.2 mm | 8 in

Width 152.4 mm | 6 in

Length 254 mm | 10 in

Mounting Diameter, maximum 88.9 mm | 3.5 in

Mounting Diameter, minimum 38.1 mm | 1.5 in

Material Specifications

Material Type Hot dip galvanized steel

Packaging and Weights

Included Clamps | Plates

Packaging quantity 1

Weight, net 7.3 kg | 16.094 lb

Regulatory Compliance/Certifications

Agency

ISO 9001:2015

Classification

Designed, manufactured and/or distributed under this quality management system