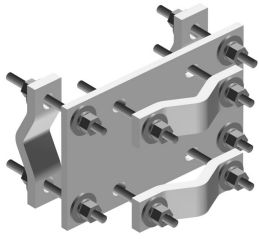


# CO-400

---



Crossover Plate, joins 2 in to 5 in OD to 4 in to 9 in OD round member

## Product Classification

**Product Type** Clamp plate

## General Specifications

**Mounting** Crossover plate

**Tower Taper** Non-tapered

## Dimensions

**Height** 304.8 mm | 12 in

**Width** 304.8 mm | 12 in

**Length** 203.2 mm | 8 in

**Mounting Diameter 2, maximum** 228.6 mm | 9 in

**Mounting Diameter 2, minimum** 101.6 mm | 4 in

**Mounting Diameter, maximum** 127 mm | 5 in

**Mounting Diameter, minimum** 50.8 mm | 2 in

## Material Specifications

**Material Type** Hot dip galvanized steel

## Packaging and Weights

**Included** Clamps | Plates

**Packaging quantity** 1

**Weight, net** 13.6 kg | 29.983 lb

## Regulatory Compliance/Certifications

### Agency

ISO 9001:2015

### Classification

Designed, manufactured and/or distributed under this quality management system