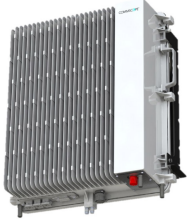


CAP-MX



Carrier Access Point with 11-Band Support Medium Power Applications

Product Classification

Regional Availability	North America
Product Type	Access point
Product Brand	ERA®
Product Series	CAP MX
Warranty	For more information, please consult our Product Warranty guidelines

General Specifications

Fan Kit	Not included
Fed Type	Fiber fed
Note	Detailed Product Specifications are available. Please contact your local CommScope representative.
Power Class	Medium

Electrical Specifications

License Band	AWS 1700 B 70 BRS 2500 CEL 850 LMR 750 PCS 1900 SMR 800 USA 600 USA 700 USA 700E USA 750 WCS 2300
Voltage Range	+100 to +240 Vac -60 to -36 Vdc

* Footnotes

Warranty	For more information, please consult our Product Warranty guidelines
-----------------	--