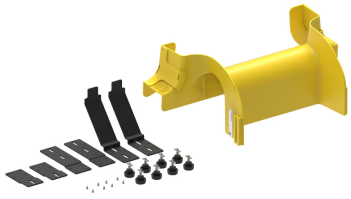


FGS-MEXP-F-F/H-NC



FiberGuide® 12-Inch Express Exit™, Cover Not Included, 4x12, 4x18, 4x24in, Yellow

Product Classification

Regional Availability	Asia Australia/New Zealand EMEA Latin America North America
Portfolio	CommScope®
Product Type	Express exit
Product Brand	FiberGuide®
Product Series	FGS

General Specifications

Color	Yellow
Orientation	Horizontal
Section Type	Express exit

Dimensions

Height	196.342 mm 7.73 in
Width	558.8 mm 22 in
Length	294.97 mm 11.613 in
System Dimensions	102 mm x 305 mm (4 in x 12 in) 102 mm x 457 mm (4 in x 18 in) 102 mm x 610 mm (4 in x 24 in)

Ordering Tree

FGS-MEXP-F-F/H-NC



Section Color

9	empty	yellow
	B	black

Section Size

10	A/B/F	4 x 4/6/12 in, with 2 x 2 in exit
	E-A/B/F	4 x 4/6/12 in, with 4 x 4 in exit
	F-F/H-NC	4 x 12/18/24 in, with 4 x 12 in exit, no cover
	G-A/B/F	4 x 4/6/12 in, with 4 x 6 in exit
	LP-A/B/F	4 x 4/6/12 in, with 2 x 2 in exit, low profile
	LP-CA	4 x 4/6/12 in, with 2 x 4 in exit, low profile
	LP-G	2 x 6 in, with 2 x 2 in exit, low profile
	GS-ABF-NC	4 x 4/6/12 in, with 4 x 6 in exit, no cover
	CV	cover
	NC	no cover

Material Specifications

Material Type Engineering Thermoplastic

Environmental Specifications

Flammability Rating CSA S143 | UL 2024 | UL 94 V-0

Halogen Characteristics Blue Angel | TCO '99 | WEEE

Safety Standard CSA | UL

Packaging and Weights

Packaging quantity 2

Weight, net 5.454 kg | 12.024 lb

Regulatory Compliance/Certifications

Agency	Classification
CHINA-ROHS	Below maximum concentration value
REACH-SVHC	Compliant as per SVHC revision on www.commscope.com/ProductCompliance
ROHS	Compliant
UK-ROHS	Compliant

