

16-port Ultra-Wideband Base Station Antenna: New Product

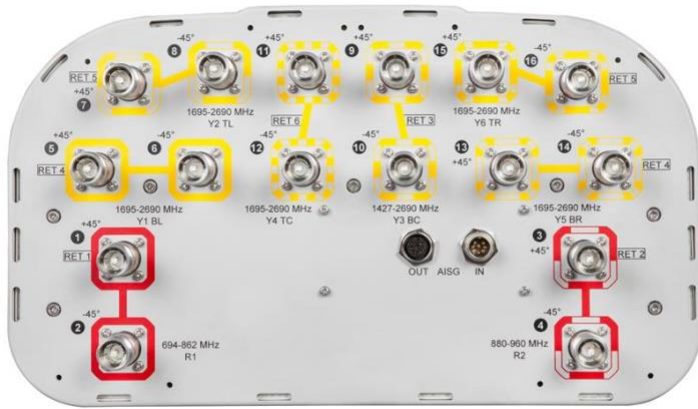
CommScope introduces our first 16-port ultra-wideband antenna, featuring internal diplexer technology that enables wireless operators to install one antenna where multiples were previously needed. The EGZV5-65D-R6 ultra-wideband antenna is also the first in CommScope's ultra-wideband antenna family to incorporate two sets of 3 horizontally-spaced high band arrays in a 395 mm-wide package. This arrangement maximizes 4x MIMO capability. The new 16-port antenna reduces required antenna counts—lowering tower leasing costs and speeding up deployments.

This antenna system is also optimized for high performance in capacity-sensitive, data-driven environments.

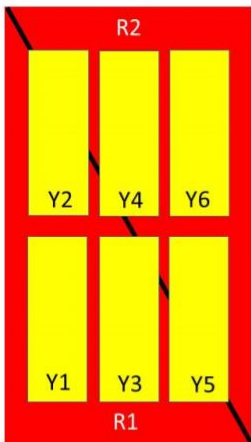
- Future-ready site deployments, **ultra-wideband on diplexed low bands**
 - For lower bands, supports LTE 700/800 MHz and 850 MHz, separated from GSM900 / LTE900 applications
 - For higher bands, supports LTE 1500, 1800, 1900, 2100 MHz and 2.6 GHz networks
- **Element diplexed technology** reduces the antenna size and maintains independent downtilt control for both low band systems.
- **Two sets of 3 horizontally-spaced high band arrays** for optimum MIMO capability. 4X2 and 4X4, including carrier aggregation support.
- **New Low and High Band radiator designs** for optimum RF performance.
- **Azimuth beamwidth stability across the frequency band** provides improved coverage and uniformity of coverage across the band.
- **4.3-10 connectors** reduce the size on the antenna end cap and provides exceptional intermodulation stability on the connector level.
- **Internal RET System** is full interoperability with all major RAN platforms. Cascaded single RET using AISG 2.0 protocol. Color coding helps ensure proper electrical tilt configurations (see Array Layout graphic).



Port Configuration



Array Layout



Array	Freq (MHz)	Conns	RET (SRET)	AISG RET UID
R1	694-862	1-2	1	CPxxxxxxxxxxxxxxxxR1
R2	880-960	3-4	2	CPxxxxxxxxxxxxxxxxR2
Y1	1695-2690	5-6	3	CPxxxxxxxxxxxxxxxxY1
Y5	1695-2690	13-14		
Y2	1695-2690	7-8	4	CPxxxxxxxxxxxxxxxxY2
Y6	1695-2690	15-16		
Y3	1427-2690	9-10		
Y4	1695-2690	11-12	6	CPxxxxxxxxxxxxxxxxY4

Left Right
Bottom

(Sizes of colored boxes are not true depictions of array sizes)

Ordering Information:

Please visit eCatalog for product details.

Part Number	Beamwidth	Frequency (MHz)	Length	RET option
EGZV5-65D-R6	8 x 65°	694-862 / 2-ports 880-960 / 2-ports 1695-2690 / 10-ports 1427-2690 / 2-ports	2.7 m	6 internal CommRET v2 motors; 1 AISG I/O port pair; cascaded SRET mode