



Self-Supporting Towers



High quality, economical towers, with a patented design innovation that reduces tower weight and allows for ultra-fast assembly

No gusset plates, fewer parts and connections —

Andrew free-standing triangular towers use a patented crimped leg design for an unequaled high-strength, low-weight solution



As demand for wireless services increases throughout the world, Andrew can help operators profitably meet their expansion goals with a diverse family of innovative, modular, lattice tower configurations, each built to maximize the strength-to-weight ratio, while meeting operator needs for cost-effectiveness, speedy deployment, low maintenance, and outstanding functionality in any environment.

Thousands of Andrew towers are currently in use by dozens of carriers, proving their ability to provide effective, economical service on a long-term basis.

Patented Andrew Crimp technology vastly reduces tower weight

Andrew towers are fully modular, with the middle portion of each leg member crimped to a precise 60° angle at the factory. This patented innovation allows each horizontal and vertical member to attach directly to the leg at the crimp without the need for gusset plates.

This Andrew Crimp vastly decreases the number of parts needed per tower, while reducing weight, lowering cost, and speeding deployment.

Assembles rapidly, using only basic tools

The Andrew tower is designed with your field crews in mind, and provides for the fastest, easiest installation of any tower in the industry. Modular sections and fewer parts mean that installation times can often be reduced by 25% or more compared to other solutions, helping you expand your network even faster and more cost-effectively.

All tower members are individually stamped for easy reference to assembly diagrams, ensuring speed and accuracy on site. Only minimal crew training is needed, and expert Andrew personnel are available to provide supervision and assistance.

Your crews don't need cranes, or any other heavy or specialized equipment. All individual tower components are of a readily manageable size, with none larger than 5.8 m, and can be easily off-loaded by hand once delivered to site. Only basic tools, such as pulley block, rope, and torque wrench are needed for installation. The completely bolted design needs no welding, and no double or lock nuts are required. Installers quickly assemble each section, then step up on that section to install the next section above it.

To further assist in your deployment efforts, Andrew can even ship general materials along with the tower components, such as earthing kits, navigation lights, painting kits, and other items that may be useful during the installation phase.

Low maintenance tower helps minimize operating costs

All leg connections in Andrew towers are double shear, optimizing leg connection strength, minimizing the number of bolts required per connection, and ensuring long bolt life.

All tower members are galvanized for high quality corrosion protection. In the event of damage to the galvanization, parts can be easily re-coated in the field. In contrast to tubular-type towers, any corrosion can be seen and eliminated early, and is not likely to ever cause damage to the structure.

The right tower for any application

Andrew's product line is geared to meet nearly any operator need, taking into account factors such as desired antenna load, local wind conditions, terrain, altitude, and ground conditions. Our main offering currently includes:

- 3-sided parallel tower (height up to 36 m)
- 3-sided light-medium tower (height up to 72 m)
- 3-sided medium tower (height up to 104 m)
- 3-sided heavy tower (height up to 104 m)

Typically, towers are available in increments of 2 m up to a particular height, and in increments of 4 m thereafter.

In addition to the towers listed above, a back bone tower, with maximum height of 100 m, is in development. This will allow Andrew to provide customers with a uniquely diverse family of towers ranging from one

small enough to provide a superior alternative to a monopole installation, to one that can accommodate the heaviest dish on a top-mounted installation, and everything in between.

Further, because the Andrew design is modular, elements of different towers can be combined to optimally meet certain conditions. For example, for some installations, we have custom configured towers where lighter top sections are removed, and heavier bottom sections are added. This can help our customers, for example, meet stringent twist and sway requirements, add additional antenna loads, or operate effectively in extremely windy terrain.

Built to fit in even the tightest spaces

All Andrew towers are designed to have the smallest footprint possible, and, for densely populated cities or other areas where space is at a premium, Andrew engineers have developed an innovative portal solution. In this space-minimizing configuration, the container sits conveniently within the 3-sided tower footprint, thereby reducing the space required by up to 40%.



Packaged for economical shipping, easier handling

Always anticipating ways to make our towers an even more effective solution for you, Andrew towers are designed so that they can be shipped in 20 foot containers, which are half the size of those used by many other tower suppliers. In fact, the strategic design allows two 50 m towers to be packed in a single 1 x 20 ft container. This minimizes your freight costs, and you further benefit from easier storage and handling in your warehouse as well.

High quality construction for long service life

While most other towers on the market are made up of components that are drilled and punched by hand, each structural component of every Andrew tower is machined using fully automated, highly accurate computer numerical controlled (CNC) machining equipment. This ensures that every member is manufactured to the tightest tolerances, eliminating surprises on-site and related problems down the road.

Andrew is an ISO 9001:2000 certified company, further ensuring you of consistently high quality and attention to detail at every stage of the process.



Expert engineering support

Unlike most other tower manufacturers, Andrew has an in-house professional engineering staff supporting you every step of the way. These experts work with you to analyze your needs and identify the lowest cost tower that will meet them, and, if necessary, custom designing a tower or configuration for you.

In addition, our engineers offer full support with regard to foundation design, and are always available to your crews to help answer questions and provide troubleshooting expertise.

Down the road, as you grow, Andrew engineers are by your side, helping you plan for added capacity and upgrade towers to best meet the needs of your business.

Andrew: A proven partner in your success

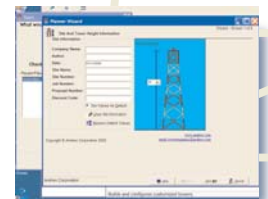
Andrew Corporation is the market leader in the global wireless infrastructure industry, designing, manufacturing and delivering innovative products and solutions for operators and original equipment manufacturers around the world—Headquartered in Westchester, Illinois, USA, Andrew serves customers from facilities in 35 countries. Founded in 1937, Andrew is an S&P 500 company, and is listed on the technology-driven NASDAQ stock exchange under the symbol ANDW.

Fewer parts. Lighter weight. Better tower.

Andrew can help you expand your network quickly and cost-effectively, with a patented tower design that meets your needs for high quality and low ongoing operating costs.

For more information about the family of Andrew towers, contact your Andrew representative at +27 11 719 6000. In the meantime, you can get more information and view technical data at www.andrew.com/products/towers/

While you're there, we invite you to download a free copy of our innovative Tower Designer software. This valuable pre-planning tool allows you to enter data such as desired tower height, altitude, terrain, wind speed, and desired antenna and accessory loading, and will give you a preliminary feel for optimum tower type and provide a rough cost estimate. However, be sure to speak with your Andrew representative for final specifications and a special discounted quote.



We look forward to working with you, and helping you expand your network faster and more cost-effectively than you ever thought possible.



Serving Global Communications

- Angola
- Argentina
- Australia
- Austria
- Belgium
- Brazil
- Bulgaria
- Cameroon
- Canada
- Chile
- Colombia
- Croatia (Hrvatska)
- Czech Republic
- Denmark
- Dominican Republic
- Ecuador
- Egypt
- Ethiopia
- France
- Germany
- Ghana
- Greece
- Guatemala
- Hong Kong
- Hungary
- India
- Indonesia
- Israel
- Italy
- Japan
- Jordan
- Kenya
- Kuwait
- Malaysia
- Mexico
- Mozambique
- Netherlands
- New Zealand
- Nigeria
- Norway
- Pakistan
- Panama
- Paraguay
- People's Republic of China
- Peru
- Philippines
- Poland
- Portugal
- Republic of Korea
- South Africa
- Romania
- Russia
- Saudi Arabia
- Singapore
- Slovakia (Slovak Republic)
- Spain
- Sri Lanka
- Sweden
- Switzerland
- Taiwan, Province of China
- Thailand
- Tunisia
- Turkey
- Uganda
- Ukraine
- United Arab Emirates
- United Kingdom
- United States
- Uruguay
- Venezuela
- Zambia

For comprehensive contact information:

www.andrew.com

Telephone: +27 11 719 6000 Fax: +27 11 444 5393 Email: #asa-towerenquiries@andrew.com