



# ValuLine<sup>®</sup> III Next Generation Antennas VHLP2

## SPECIFICATIONS

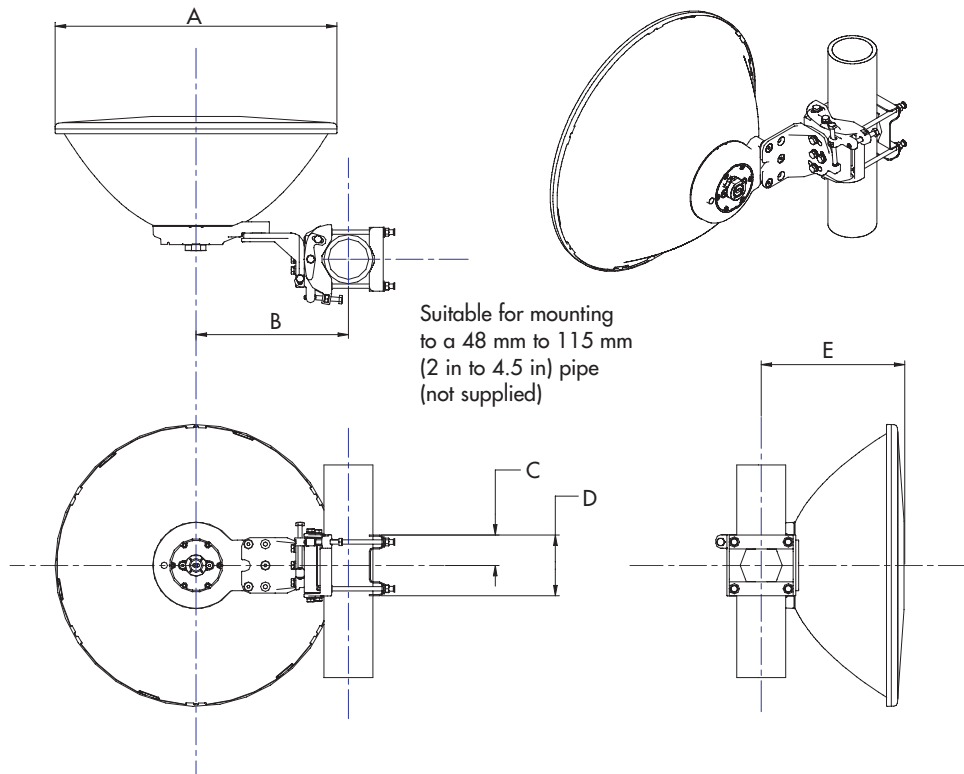
	VHLP2-7W	VHLP2-10W	VHLP2-11	VHLP2-13	VHLP2-15	VHLP2-18	VHLP2-23	VHLP2-26	VHLP2-28	VHLP2-32	VHLP2-38
Frequency Band, GHz	7.125–8.5	10.55–10.68	10.7–11.7	12.70–13.25	14.25–15.35	17.7–19.7	21.2–23.6	24.25–26.5	27.5–29.5	31.8–33.4	37.0–40.0
Bottom Band Gain, dBi	29.5	33.7	34.0	35.6	36.5	38.3	39.8	40.8	41.8	43.4	44.6
Mid Band Gain, dBi	30.7	33.8	34.4	35.8	36.8	38.7	40.4	41.2	42.2	43.7	45.2
Top Band Gain, dBi	31.9	34.3	35.0	36.0	37.2	39.1	41.0	41.8	42.7	44.0	45.8
Beamwidth, degrees	4.7	3.7	3.3	2.7	2.5	2.1	1.7	1.5	1.3	1.0	0.9
Front/Back, dB	57	56	60	62	65	67	66	68	68	61	66
XPD, dB	32	30	30	30	30	30	30	30	30	30	30
Return Loss, dB	17.7	17.7	17.7	17.7	17.7	17.7	17.7	17.7	17.7	17.7	17.7
Regulatory Compliance											
ETSI Class	R1 C3	R1 C2	R1 C3	R1 C3	R2 C3	R2 C3	R3 C3	R4 C3	R4 C3	R5 C3B	R5 C3B
FCC Part 101	N/A	CAT A*	CAT B	N/A	N/A	CAT A	CAT A	CAT A	N/A	N/A	CAT A
Brazil Anatel	N/A	C2	C2	C2	C2	C2	C2	C2	C2	C2	C2
Canada SRSP	N/A	310.5	N/A	312.7B	314.5A	Note 1	Note 2	N/A	N/A	N/A	338.6A
Andrew RPE Number	7075A	7085B, 7086B*	7083A	7004	7008	7012A	7016A	7020A	7024A	7028	7032A

Note 1: Meets Canada SRSP 317.8A, 318.5, 318.8

Note 2: Meets Canada SRSP 312.2A, 321.8B

\* Use for FCC band (10.5–10.7 GHz)

One Company. A World of Solutions.

**SPECIFICATIONS****ValuLine® III Next Generation Antennas—VHLP2****Antenna Dimensions, mm (in)**

A	663 (26.1)
B	358 (14.1)
C	72 (2.8)
D	143 (5.6)
E	335 (13.2)

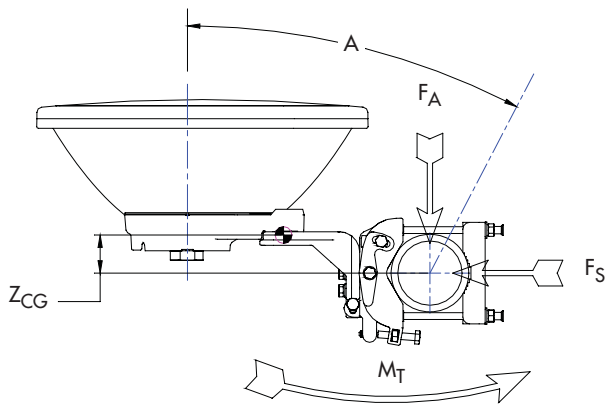
**Antenna Fine Adjustment**

Fine Azimuth	$\pm 10^\circ$
Fine Elevation	$\pm 25^\circ$

## ValuLine® III Next Generation Antennas—VHLP2

### Wind Loading

The axial, side, and twisting moment forces stated below are the maximum loads applied to the tower by the antenna at a survival windspeed of 250 km/h (155 mph). They are the result of wind from the most critical direction for each parameter. The individual maximums may not occur simultaneously. All forces are referenced to the antenna mounting pipe.



Axial force	$F_A$	1066 N (240 lb)
Side force	$F_S$	496 N (111 lb)
Moment	$M_T$	382 N-m (282 lb-ft)
Angle A for $M_T$ maximum		0°
$Z_{CG}$ * without ice, mm (in)		125 (4.9)
$X_{CG}$ with 12 mm (1/2 in) radial ice, mm (in)		188 (7.4)

\* $Z_{CG}$  is the axial distance from the center of gravity to the mounting pipe.

### Antenna Weights Including Mount

Antenna without ice, kg (lb)	12.28 (27)
Antenna with 12 mm (1/2 in) radial ice, kg (lb)	24.7 (54)

### Antenna Packed Weights (Gross)

Weight, kg (lb)	19.42 (43)
-----------------	------------

### Packed Antenna Dimensions (Single Unit Pack)

Dimensions, cm (in)	70 x 70 x 56 (27.5 x 27.5 x 22.0)
---------------------	-----------------------------------



One Company. A World of Solutions.

Andrew Corporation  
3 Westbrook Corporate Center  
Suite 900  
Westchester, IL 60154 US

Customer Support Center  
From North America  
Telephone: 1-800-255-1479  
Fax: 1-800-349-5444

International  
Telephone: +1-708-873-2307  
Fax: +1-779-435-8579

Internet: [www.andrew.com](http://www.andrew.com)

All designs, specifications, and availabilities of products and services presented in this bulletin are subject to change without notice.

Bulletin PA-101028.5-EN (10/07)

© 2007 Andrew Corporation, Westchester, IL 60154 US