

**NEW PRODUCT  
ANNOUNCEMENT**



## ValuLine® III Next Generation Antennas VHLPX6

### SPECIFICATIONS

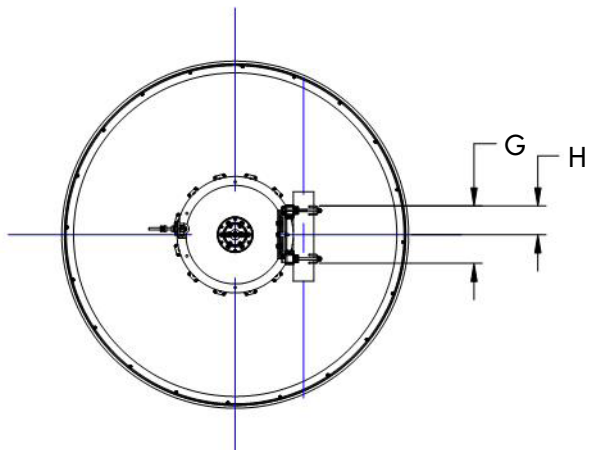
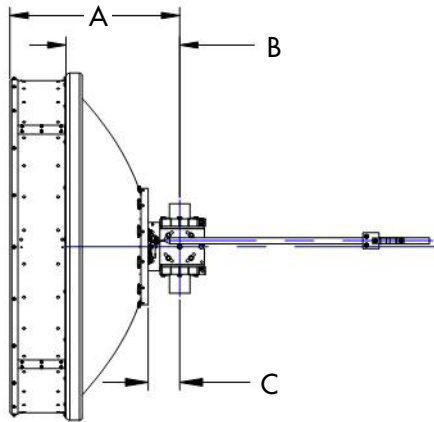
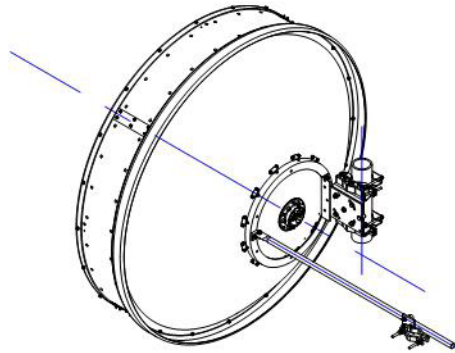
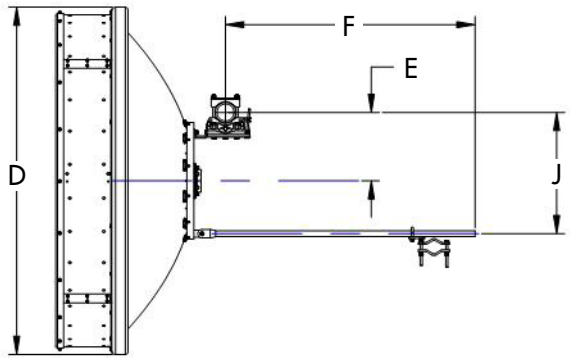
	VHLPX6-6W	VHLPX6-7W	VHLPX6-10W	VHLPX6-11	VHLPX6-13	VHLPX6-15	VHLPX6-18	VHLPX6-23
Frequency Band, GHz	5.925–7.125	7.125–8.5	10–10.7	10.7–11.7	12.70-13.25	14.25-15.35	17.7-19.7	21.2-23.6
Bottom Band Gain, dBi	37.8	39.9	43.0	43.3	44.8	45.9	46.8	48.7
Mid Band Gain, dBi	39.0	40.6	43.1	43.8	45.2	46.2	47.6	49.2
Top Band Gain, dBi	39.8	41.1	43.3	44.4	45.5	46.5	48.2	49.7
Beamwidth, degrees	1.8	1.5	1.2	1.1	0.9	0.8	0.7	0.5
Front/Back, dB	65	67	69	70	72	74	76	79
XPD, dB	32	32	30	30	30	30	30	30
Return Loss, dB	17.7	17.7	17.7	17.7	17.7	17.7	17.7	17.7
Regulatory Compliance								
ETSI Class	R1 C3	R1 C3	R1 C3	R1 C3	R1 C3	R2 C3	R2 C3	R3 C3
FCC Part 101	N/A	N/A	Cat A	Cat A	Cat A	N/A	Cat A	Cat A
Brazil Anatel	N/A	C2	C2	C2	C2	C2	C2	C2
Canada SRSP	N/A	307.1/307.7B	310.5	310.7B	312.7B	314.5A	317.8A	321.8A
Andrew RPE Number	7139	7082A	7098A	7046	7052	7058	7064	7070

### VHLPX6-7W SUB-BAND PERFORMANCE

Band	7.125–7.75	7.425–7.9	7.75–8.5
Bottom Band Gain, dBi	40.1	40.3	40.6
Mid Band Gain, dBi	40.3	40.5	40.9
Top Band Gain, dBi	40.6	40.7	41.1

**SPECIFICATIONS**

ValuLine® III Next Generation Antenna—VHLPX6



Antenna Dimensions, mm (in)

A	857.6 (33.75)
B	546.2 (21.5)
C	68.7 (2.7)
D	1938.6 (76.3)
E	435.6 (17.1)
F	1485.4 (58.5)
G	350.0 (13.8)
H	175.0 (6.9)
J	670.6 (26.4)

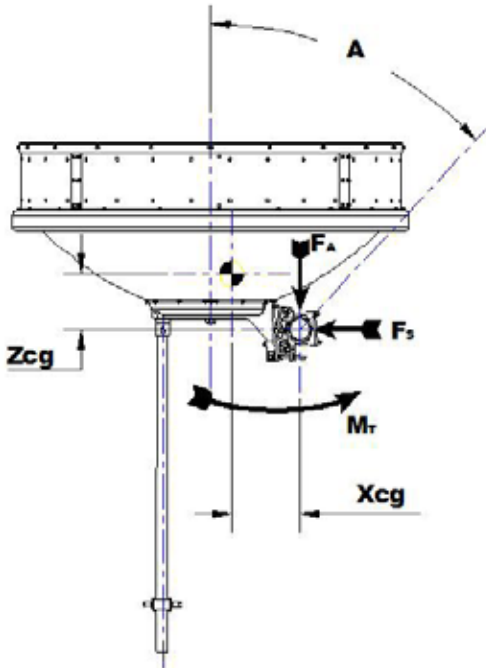
Antenna Fine Adjustment

Fine Azimuth	$\pm 12^\circ$
Fine Elevation	$\pm 15^\circ$

## ValuLine® III Next Generation Antenna—VHLPX6

### Wind Loading

The axial, side, and twisting moment forces stated below are the maximum loads applied to the tower by the antenna at a survival windspeed of 200 km/h (125 mph). They are the result of wind from the most critical direction for each parameter. The individual maximums may not occur simultaneously. All forces are referenced to the antenna mounting pipe.



Axial force	$F_A$	7128 N (1602 lbf)
Side force	$F_S$	3531 N (794 lbf)
Moment	$M_T$	3197 N-m
Angle A for $M_T$ maximum		-100°

Where side struts are fitted, the loads carried by the side struts are components of, not in addition to  $F_A$ ,  $F_S$ , and  $M_T$ .

$Z_{CG}^*$ Without Ice, mm (in)	254.8 (10)
$X_{CG}$ Without Ice, mm (in)	334.3 (13.2)

\* $Z_{CG}$  is the axial distance from the center of gravity to the mounting pipe.

### Antenna Weights Including Mount

Antenna Without Ice, kg (lb)	84 (185)
Antenna with 25 mm (1 in) Radial Ice, kg (lb)	204 (450)

### Antenna Packed Weights (Gross)

Weight, kg (lb)	193 (425)
-----------------	-----------

### Packed Antenna Dimensions (Single Unit Pack)

Dimensions, cm (in)	210 x 207 x 87.6 (83 x 81.5 x 34.5)
---------------------	-------------------------------------



[www.andrew.com](http://www.andrew.com)

Visit our Web site or contact your local Andrew Wireless Solutions representative for more information.

© 2008 CommScope, Inc. All rights reserved.

Andrew Wireless Solutions is a trademark of CommScope. All trademarks identified by ® or ™ are registered trademarks or trademarks, respectively, of CommScope. This document is for planning purposes only and is not intended to modify or supplement any specifications or warranties relating to Andrew Wireless Solutions products or services.

PA-101691.2-EN (3/08)